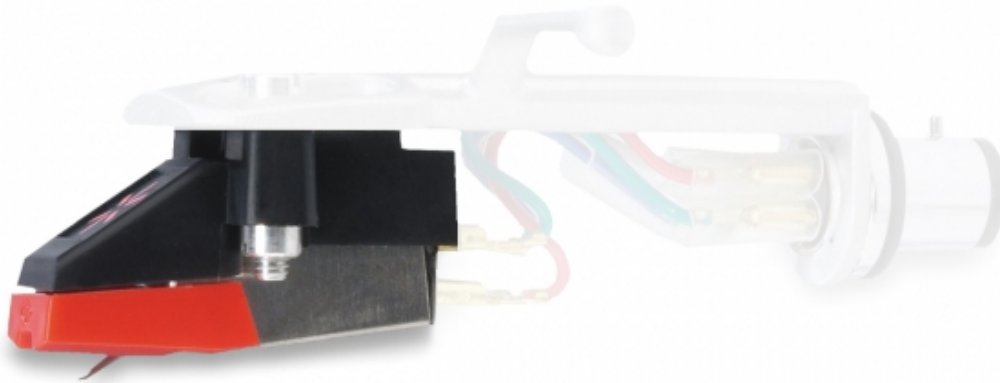


Numark GT Groove Tool Cartridge & Stylus:

The Numark GrooveTool is an adjustable cartridge with a replaceable diamond tip that will fit in a traditional head shell mount.

A red plastic stylus and black plastic cartridge are included. The silver head shell is sold separately.



Specifications

- **Frequency Response:** 20 Hz -18,000 Hz
- **Output (@1kHz):** 2.4mV
- **Channel Separation (@1kHz):** 26dB
- **Channel Balance (@1kHz):** within 2dB
- **Tracking Force:** 2.5 to 3.5g
- **Stylus Tip:** 0.6 mil, spherical
- **Cartridge Weight:** 3.2g
- **Tracking Ability:** 90u @3g
- **Recommended Load:** 47k Ω and 275pf