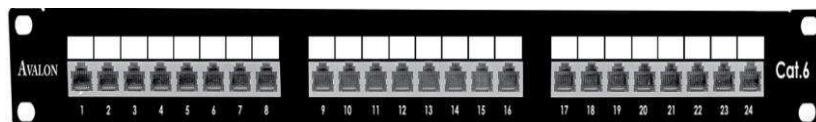


CAT.6 Shielded 24 Port Patch Panel

Avalon CAT.6 24 Port Patch Panels are the industry's high-quality Panels that support the latest technologies and diverse applications. These panels combine strength and durability with a sleek look, making them ideal for all kinds of environments. These comply with ANSI/TIA-56-.2, ISO/IEC 11801 and EN 50173-1 Class E specifications. The complete module complies with EU ROHS directive. The construction is in standard 19" size, suits for all 19" rack installations.

Features

- High density 24 port 1U patch panel
- STP Snap-in Type
- Six Port RJ45 modules applied
- Suitable for Cat.6 STP Keystone Jacks
- Integral plastic cable management
- Modern design and simplicity of mounting
- Rear cover to improve shielding and protect terminals
- LSA style termination blocks
- Easy field label systems
- Port identification



Specifications

- Thickness of cold-rolled steel: 1.5mm
- Shielded Cover: 50U Nickel plated over phosphor bronze
- Operating Temperature Range: -60°C to 80°C
- IDC Accept: 22-26 AWG
- Wire Scheme: T568A/B
- Insulation Resistance: 500Ω
- Current Rating: 1.5Amps
- DC Resistance: 0.1 ohm MAX
- Voltage: 150 VAC MAX
- Plug Retention Force: 89N
- Spring Wire: Phosphor Bronze With Gold-plated 3u-50u
- IDC Contact: Phosphor Bronze
- Specifically Design: With Two PCB Panel & Tool-less
- Insertion life: ≥1000 mating cycles
- Plug /Jack Contact Force: 100g min
- Humidity: 5 to 93% (non-condensing)

Applications

- 1000 Base- TX Gigabit Ethernet
- 1000 Base- T Gigabit Ethernet
- 100 Base -TX Fast Ethernet
- 10 Base-T Ethernet
- Voice, Video and other applications
- Standard Size for mounting in 19" Racks and Cabinets

Ordering Information

Part No	Description
ANC6SPP-24	CAT.6 Shielded 24 Port Patch Panel