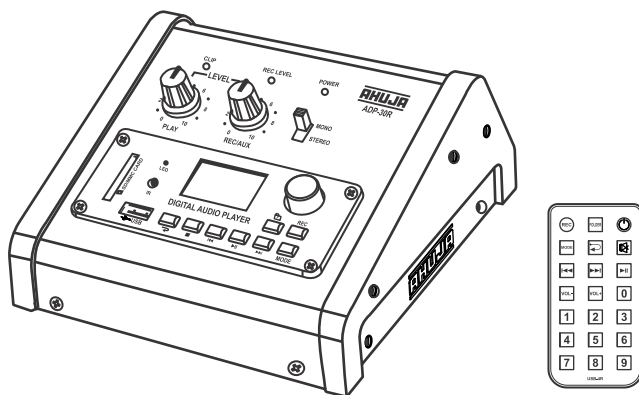


AHUJA[®]**Preamplifier with Built-in
Digital Player/Recorder**

ADP-30R



- ◆ Thank you for purchasing the AHUJA Preamplifier with Built-in Digital Player/Recorder.
- ◆ Please read this manual thoroughly before making connections and turning on the power. Following the instructions in this manual will enable you to obtain optimum performance from your new AHUJA Preamplifier with Built-in Digital Player/Recorder.
- ◆ Please retain this manual for future reference.

• Features

- n AC Mains & 12V Car Battery operation.
- n Designed for use in a wide variety of PA applications.
- n Built-in MP3 recorder player with LCD display supplied with remote control and with built-in facility of USB, SD, MMC card & Bluetooth.
- n Preamp output for connecting to Stereo or Mono input of another amplifier and a REC input for recording the preamp output of another amplifier.
- n Provision for automatic changeover from AC to Battery Operation ensures continuity of program (if 12V battery is connected).
- n Protection provided against the reverse polarity of battery connections.

Read the Instructions: Please read all the instructions in this section carefully before installation or use of the product. All the safety instructions must be followed.

Retain the Instructions: Please retain this Instruction Manual for future reference.



This symbol, wherever it appears, alerts you to the presence of uninsulated hazardous voltage that may be sufficient to constitute a risk of electric shock. External wiring to any terminal marked with this symbol must be done by a trained and instructed person only.



This symbol, wherever it appears adjacent to a component, alerts you that the concerned component can only be replaced by another of the exact same specifications.

WARNING

I To reduce the risk of electric shock, do not remove the side cheeks & top cover. No user serviceable parts inside. Refer all servicing to qualified personnel only.

CAUTIONS

Water & Moisture: To reduce the risk of fire or electrical shock, do not expose this set to rain or moisture. Do not use this set near water or in a wet location. Do not keep any object filled with liquid, such as a vase, on top of this set. Do not insert or remove the AC mains plug with wet hands.

Power Source: The voltage & frequency of the AC mains supply, and the voltage of the external battery, (if applicable) to which this set can be connected, is marked on the rear panel of the set. Do not connect this set to any power source other than those specified on the rear panel.

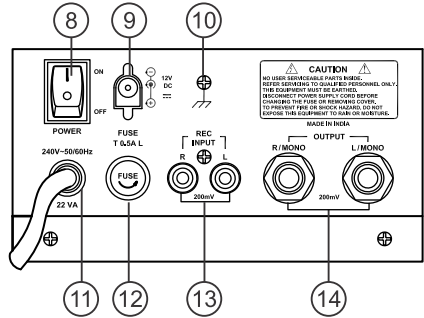
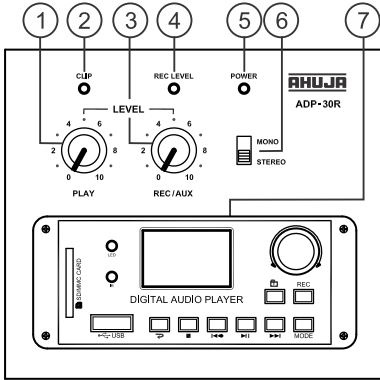
Power Cord Protection: Do not cut, kink, damage or modify the AC power cord supplied with this set. Keep the heavy object on the power cord.

Operation on Generator: When operating this set on a generator, make sure the set is switched off till the generator voltage has stabilized.

Stability: This set must be kept in a stable and flat horizontal position, and never in a tilted position. Do not place this set on an unstable stand, tripod, bracket or mount. Do not use attachments which are not supplied or explicitly recommended by the manufacturer.

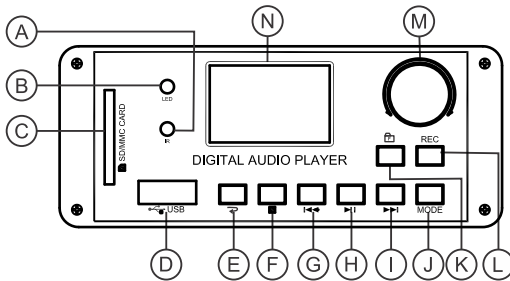
Earthing: This set must be earthed properly before use. A wire from the Earth screw on the rear panel must be connected to electrical earth.

• Operation

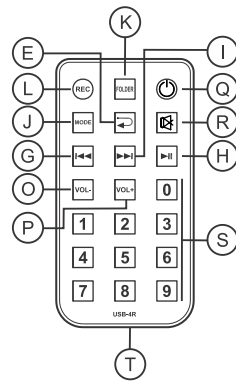


1. **Play Level Control:** To adjust the output level of module in play mode.
2. **Clip LED:** This LED glows when output level is 200mV.
3. **Rec Level Control:** To adjust the level of program to be recorded.
4. **Rec Level LED:** This LED glows when recording level of program is 200mV.
5. **Power LED:** This LED glows when the module power is ON.
6. **MONO/STEREO Switch:** For Selecting mono or stereo operation of the module.
7. **MP3** (For Details see the page:5)
8. **POWER Switch:** Push the top part of the knob to switch the unit ON. Push the bottom part of the knob to switch the unit OFF.
9. **DC Socket:** For Connecting 12V DC from external source or car battery.
10. **EARTHING Screw:** For connecting a wire from module to electrical earth.
11. **2-core AC mains Cable with plug**
12. **AC mains Fuse Rating 0.5A (T0.5 AL)**
13. **REC Input 200mV RCA Socket:** For accepting an unbalanced signal from an auxiliary source like Tuner, Echo Unit, or CD Player etc.
14. **OUTPUT 200mV:** For Connecting to the AUX input of another amplifier.

MP3 Module

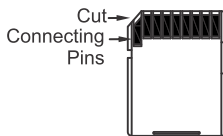


Remote Control

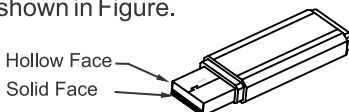


- A. IR Sensor:** Picks up signal from the Remote control. For best results, point the Remote control towards IR sensor.
- B. LED:** This LED blinks when recording is going on.
- C. SD/MMC Card Connector:** Insert the SD/MMC Card into its appropriate slot to play. When taking out the card, pull the card to take out.

While inserting SD/MMC card into the slot, ensure that the card is inserted in such a way that all pins are towards right & cut is facing upwards.



- D. USB Connector:** Insert the USB drive here. While inserting USB drive into the USB connector, hold the USB drive in such a way that hollow face of the USB drive is upwards as shown in Figure.



Any forceful insertion in wrong direction will damage the connector.

- E. ↻ Cycle Mode:** Successive pressing of this button provides various options like REPEAT1, INTRO, NORMAL, FOLDER, REPEAT FOLDER, RANDOM and REPEATALL.
- F. STOP:** Press this key to stop PLAY.
- G. ⏮ Prev:** During playback short pressing the Prev. key will go to the prev. file/track. Long press will fast backward the track. In main menu, short pressing previous key will go to the previous option.
- H. ▶⏪ PLAY/PAUSE:** Press PLAY/PAUSE once to pause if music is already playing. Press PLAY/PAUSE again to resume playing. During recording, short press of PLAY/PAUSE will immediately start playing the recently recorded file.
- I. ▶▶ Next:** During playback, short press the Next key to go to the next file or track and long press to fast forward the track. In main menu, short press Next key to go to the next option in the main menu.

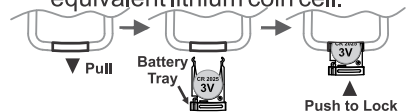
- J. **Mode:** Press MODE key for the selection of desired function from main menu. While USB/SD/Bluetooth functions are in use for playback or recording, if the MODE key is pressed then it will stop the function & return to main menu.
- K. **Folder:** Press the FOLDER key and display will show track list or folder of the USB/SD card, then use Next/Prev. key or rotate the control 'M' to select the desired track and press Mode/control knob to confirm.
- L. **REC:** Press REC button when USB/SD Card is connected, then module will start recording in USB/SD Card. During recording short press the REC button, it will Pause the recording. Press again to resume the recording. Long press of REC button or short press of Play button during recording will immediately start playing the latest recorded file.
- M. **Rotary Control:** Rotate clockwise or anticlockwise for selecting the option from main menu and press control knob to confirm. In case of folder option, LCD will show folders or track list. Select the desired file by rotating this knob and press to confirm. In case of USB/SD Card playback, rotate this knob to select the Next or Previous track and short press this knob to confirm. Long press will go to main menu .

By rotating this knob clockwise or anticlockwise, during playback, display will show the track name.

To play the selected track immediately, press the knob to confirm. If not pressed then it will start to play automatically the selected track after completing the current track being played.

For example track 001 is currently playing. After rotation, rotary knob cursor is on track 005 and left without pressing, then after completing track 001 it will automatically start to play track 005.

- N. **LCD Display:** Momentarily displays 3 digits of the track selected to play from 001 to 999. During play, displays the time duration of the track being played.
- O. **VOL- :** To decrease volume level of MP3 player.
- P. **VOL+ :** To increase volume level of MP3 player.
- Q. **Power:** Press once to switch off MP3 player, press again to switch ON.
- R. **MUTE:** Press once to mute the audio, press again to resume the audio.
- S. Number key 0 to 9. To choose the track number to be played.
- T. **Battery Replacement:** Pull out the battery tray and replace the battery with positive electrode facing upwards as shown in fig. below. Push the battery compartment back to the close position. Use CR2025 or equivalent lithium coin cell.



- n Keep all volume controls to '0' position and the power switch at OFF position.
- n Plug in the AC power cord to the nearest AC mains socket and put the power switch to ON position. LCD Display will show 'AHUJA' Logo.
- n Press the mode switch or rotate the control knob to go to the main menu. It will show USB REC/Player, SD REC/Player, BT MODE, AUX, SET CONTRAST, VERSION.

System as a Player:-

- a) Insert the USB drive or SD card into their respective port. Module will automatically start playing.
- b) When the MP3 player starts playing, the first line of display shows the time elapsed of the track being played/total time of the track, in the second line of the display show name of track & third line shows track No. being played/total number of tracks.

00:01
 ABCDEF
 0001/XXXX
- c) Use the volume button on the remote control or play level control on the set to adjust the desired playback level so that clip LED starts glowing. Select the desired track by remote control or press Next/Prev keys.
- d) Press STOP to stop the track being played.
- e) Setting of volume level remains in memory.
- f) Use remote control to switch OFF the USB MP3 recorder player while not in use.

System as a Recorder:-

- a) Insert the USB drive or SD card

into the respective port.

- b) Feed the signal to be recorded into the REC Input. Increase the recording level control such that REC LEVEL LED on the front panel just glows.

Press REC button, the system will start recording immediately. Display will show the track no., time elapsed, & total recording time. It will automatically save the file into a separate RECORD folder. By the name REC 001.....REC 00n.



- c) need arises to PAUSE the recording, short Press REC button to PAUSE the recording. To resume the recording again short press the REC key. It will resume recording in the same file and from the same point where it paused earlier.
- d) Long pressing the REC button or Short pressing PLAY/PAUSE button during recording will immediately start playing the last track recorded. Press the MODE button to exit the REC function & return to main menu and track will be saved automatically.
- e) To playback the recorded programme, press FOLDER key. Rotate the control knob to select RECORD folder and the desired recorded file to play.

• Pairing of Bluetooth Device

Switch ON the unit ADP-30R and select the Bluetooth option either by pressing MODE button or rotary control on MP3 module.

To play the MP3 programme from mobile phone or laptop in bluetooth mode, the PAIRING of mobile phone/laptop & the unit is necessary.

Normally the following general instructions are followed :

For pairing of devices, switch ON the Bluetooth option in mobile phone or laptop.

The mobile phone or laptop starts searching for the new Bluetooth device. The moment new device by name PA or Bluetooth appears on the mobile phone or laptop, select the new device i.e. PA or Bluetooth and press OK or else allow as it appears on mobile phone or laptop . The display on the unit shows BT mode connected and the system is now ready to use.

In some mobiles, it asks for a code to allow access. Press 0000 and follow the steps, like pressing "OK", "Allow once", "Allow always" etc. and make the device ready for use.

Select the MP3 programme from mobile phone or laptop and press PLAY. The same song starts playing on the Ahuja Digital Player/Recorder. We can SELECT Volume, FF, Rewind, Play/Pause function either from keys on the unit or through Remote Control.

• Specifications

Input Channels	REC Input 200mV Left & Right
Frequency Response	20Hz - 20,000Hz \pm 1dB
S/N Ratio	60dB
Output	200mV / 600 Ω Mono / Stereo
Digital Player	MP3 Recorder Player with USB, SD, MMC Card & Bluetooth
Power Supply	AC: 220-240V 50/60Hz DC: 12 V Car Battery
Power Consumption	AC:22VA DC:500mA
Dimensions	W152 \times H81 \times D165 mm
Weight	1.20kg approx.

Specifications claimed are subject to permissible production tolerances.

Design and Specifications are subject to change without notice owing to continuous product up-gradation. Technical specifications are subject to production tolerances. We cannot be held responsible for printing errors, should they occur. **AHUJA** is a registered trademark of Ahuja Radios in India and other countries. © Copyright Ahuja Radios, 2019. All rights reserved. Any unauthorized reproduction or use of logos, images or design elements is strictly prohibited by law. No part of this compilation may be reproduced in any manner or translated without written permission.

E.& O.E.

TRUSOUND PVT. LTD. • C-89, Sector IV, Noida, Gautam Budh Nagar-201 301 (UP)

Regd. Office : 125E, Okhla Industrial Estate, New Delhi-110 020

Tel.: +91-120-4665665 Fax : +91-120-4665621

E-mail: trusoundsupport@airtelmail.in