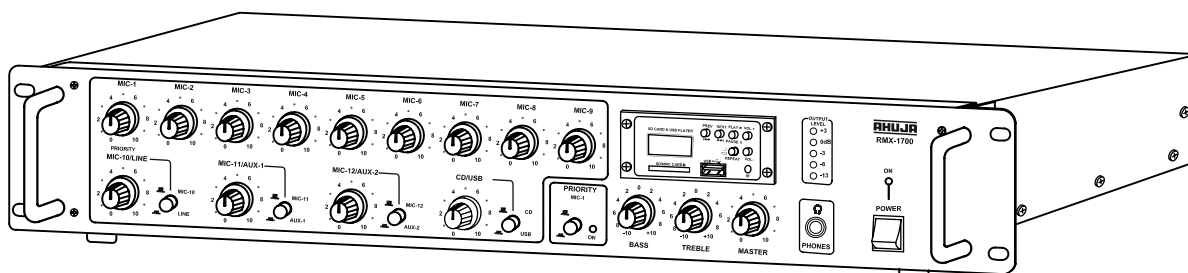
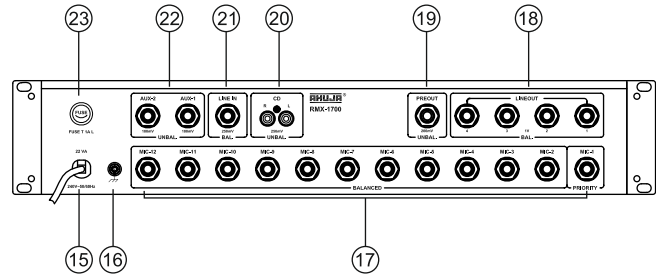
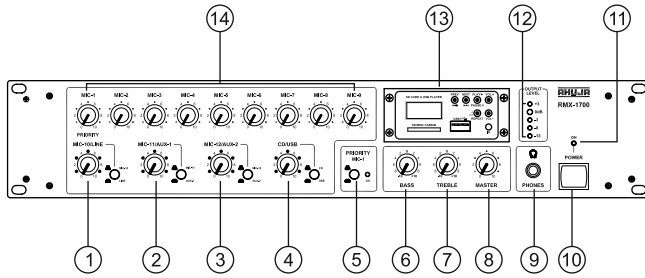


AHUJA[®]**PA AUDIO MIXER PREAMPLIFIER****RMX-1700****FEATURES**

- 12 MIC, 2 AUX, 1 Line, 1 CD, and USB inputs.
- Separate Volume Controls for each Mic Input.
- Headphone output for monitoring.
- Active BASS and TREBLE controls provided for shaping tonal quality of music & speech as desired.
- PREOUT, LINE OUTPUTS available.
- 5 LED array for Output level indication.
- 19" Rack mounting design.
- Ideal for Stage, Music Programs, Open Conferences and other PA Applications.

-
- ♦ Please read this manual thoroughly before making connections and turning on the power. Following the instructions in this manual will enable you to obtain optimum performance from your new AHUJA PA Audio Mixer Preamplifier.
 - ♦ Please retain this manual for future reference.

Front & Rear Panel Controls & Features



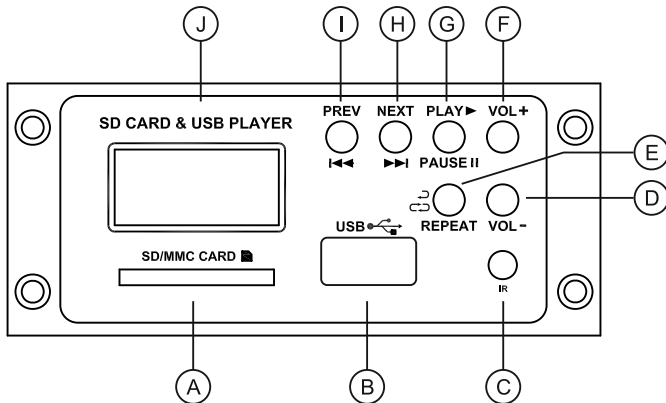
1. **MIC-10 / LINE Input Volume Control with Selector Switch** to change between MIC-10 and LINE. Push the switch to select LINE input and release to select MIC-10.
2. **MIC-11 / AUX-1 Volume Control with Selector Switch** to change between MIC-11 and AUX-1. Push the switch to select AUX-1 and release to select MIC-11.
3. **MIC-12 / AUX-2 Volume Control with Selector Switch** to change between MIC-12 and AUX-2. Push the switch to select AUX-2 and release to select MIC-12.
4. **CD / USB Volume Control with Selector Switch** to change between CD and USB. Push the switch to select USB and release to select CD.
5. **PRIORITY ON/OFF SWITCH with LED indication:** When switch is pressed then MIC-1 priority is activated. When MIC-1 is used, all other input signals are attenuated. Priority feature is disabled when switch is in unpressed condition.
6. **BASS Control:** This control cut or boost the low frequencies. Musical instruments like Tabla, Drum and percussion instruments respond to boost of low frequencies.
7. **TREBLE Control:** This control cut or boost the high frequencies.
8. **MASTER Control:** All input signals mixed are finally controlled by the Master Control for overall opening of the volume from the mixer.
9. **HEADPHONES Output:** Headphone output through a 6.3mm stereo jack is available for monitoring.
10. **POWER Switch:** Push the top part of the knob to switch the amplifier ON. Push the bottom part of the knob to switch the amplifier OFF.
11. **POWER 'ON' LED:** It glows when the power switch is in ON position.
12. **LED Array:** The 5 LED array indicates the Line Output Levels. If the red LED is continuously glowing, the output signal is too high, and master control setting should be reduced.
13. **MP3 Player:** Refer Page 3.
14. **Volume Controls for MIC-1 to MIC-9**
15. **AC Mains Cable**
16. **EARTH Terminal**

17. **MIC-1 to MIC-12 Balanced Input Jacks**
These jacks are for connecting Lo-impedance Microphones.
18. **LINE Output Jacks (1Volt):** The balanced LINE output is available through four 6.3mm phone jack to connect LINE input of amplifier. The LINE output is for connecting the mixer to the LINE input of an amplifier. The circuit is configured in such a way that they do not load each other.
19. **PRE Output Jacks (200mV):** Pre Output jack is for connecting to AUX input of any amplifier for recording the program.
20. **CD Stereo Input:** For connecting higher output level sources such as a CD Player, Electronic Keyboard etc.
21. **LINE Input Jack:** Balanced input to connect higher output source or to connect line output of an amplifier.
22. **AUX-1 & AUX-2 Input Jacks:** For connecting sources like CD player or higher output wireless mics etc.
23. **AC Fuse:** 1Amp. 250V (T 1A L)

Caution

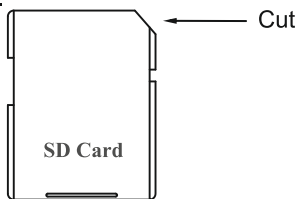
- The equipment must be earthed properly before operating it to avoid electric shock. A wire from the Earth Terminal must be connected to electrical earth for safe operation.

MP3 Playback Facility: Controls & Features

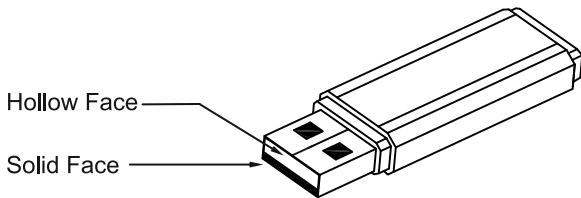


A. SD/MMC Card Connector: Insert the SD/MMC Card into its appropriate slot to play. When taking out the card, pull the card to take out.

While inserting SD/MMC card into the slot, ensure that the card is inserted in such a way that all pins are facing downward and cut is towards right as shown in figure.



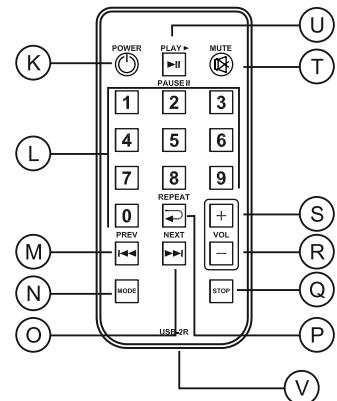
B. USB Connector: Insert the USB drive here. While inserting USB drive into the USB connector, hold the USB drive in such a way that hollow part of the USB drive is upwards as shown in Figure.



Any forceful insertion in wrong direction will damage the connector.

- C. IR Sensor:** Picks up signal from the Remote control. Point the Remote control toward this sensor when using the remote control.
- D. VOL-:** To decrease volume level of MP3 player.
- E. REPEAT ↻:** Press once to repeat the song being played. Press again to repeat all the songs.
- F. VOL+:** To increase volume level of Mp3 player.
- G. ►|| PLAY/PAUSE:** Press PLAY/PAUSE once to Pause if music is already playing. Press PLAY/PAUSE again to resume playing. Play will resume from the same point where it had stopped.

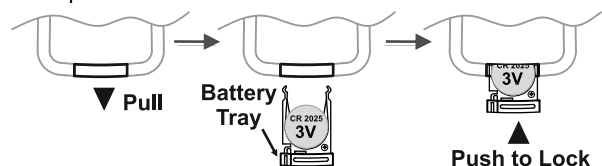
Remote Control



- H. ►► Next:** Press NEXT to select next forward music track. Pressing NEXT repeatedly will move the system to successively next forward tracks.
- I. ◀◀ Prev:** Press PREV to Select the previous track. Pressing PREV repeatedly will move the system to successively previous tracks.
- J. LCD Display:** Displays 3 digits of the track selected to play i.e 001 to 999. During play, displays the time duration of the track played.

Remote Control

- K. Power:** Press once to switch off MP3 digital player, press again to switch ON.
- L. Number key 0 to 9.** To choose the track number to be played.
- M. ◀◀:** To select the previous track.
- N. MODE :** To select SD or USB if both are inserted.
- O. ►►:** Press to select the next track.
- P. ↻** Press once to repeat the song being played. Press again to repeat all the songs.
- Q. STOP:** Press to stop the track being played.
- R. Vol-:** Press to decrease the volume of Digital Player.
- S. Vol+:** Press to increase the volume of Digital Player.
- T. ☒ MUTE:** Press once to mute the sound, press again the resume the sound.
- U. ►|| PLAY/PAUSE:** Press Play/Pause once to Pause when music is already playing. Press Play/Pause again to resume playing.
- V. Battery Replacement:** Pull out the battery tray and replace the battery with positive electrode facing upwards as shown in fig. below. Push the battery compartment back to the close position. Use CR2025 or equivalent lithium coin cell.



Safety Instructions

Read the Instructions: Please read all the instructions in this section carefully before installation or use of the product. All the safety instructions must be followed.

Retain the Instructions: Please retain this Instruction Manual for future reference.



This symbol, wherever it appears, alerts you to the presence of uninsulated hazardous voltage that may be sufficient to constitute a risk of electric shock. External wiring to any terminal marked with this symbol must be done by a trained and instructed person only.



This symbol, wherever it appears adjacent to a component, alerts you that the concerned component can only be replaced by another of the exact same specifications.

WARNING

- To reduce the risk of electric shock, do not remove the top cover. No user serviceable parts inside. Refer all servicing to qualified personnel only.
- Before replacing any fuse, make sure the set is switched off and disconnected from the AC mains or any other power source. Replace a fuse only with another of exactly same specification.

CAUTIONS

Water & Moisture: To reduce the risk of fire or electrical shock, do not expose this set to rain or moisture. Do not use this set near water or in a wet location. Do not keep any

object filled with liquid, such as a vase, on top of this set. Do not insert or remove the AC mains plug with wet hands.

Power Source: The voltage & frequency of the AC mains supply, to which this set can be connected, is marked on the rear panel of the set. Do not connect this set to any power source other than those specified on the rear panel.

Power Cord Protection: Do not cut, kink, damage or modify the AC power cord supplied with this set. Keep the AC power cord away from heaters and harmful chemicals. Do not keep any heavy object on the power cord.

Operation on Generator: When operating this set on a generator, make sure the set is switched off till the generator voltage has stabilized.

Ventilation: This set should be situated so that its location or position does not interfere with its proper ventilation. Do not cover the ventilation holes / slots. Do not insert or drop anything into the ventilation holes / slots.

Stability: This set must be kept in a stable and flat horizontal position, and never in a tilted position. Do not place this set on an unstable stand, tripod, bracket or mount. Do not use attachments which are not supplied or explicitly recommended by the manufacturer.

Earthing: This set must be earthed properly before use. A wire from the Earth terminal on the rear panel must be connected to electrical earth.

Cleaning: Disconnect this equipment from the AC mains and external battery before cleaning. Clean with a damp cloth, but do not allow any liquid to enter the set. Do not clean with liquids or aerosols.

Specifications

Outputs	: 4 × Line out 1V(Balanced); 1 × Pre out 200mV / 600Ω (Unbalanced)
Distortion	: < 1%
Inputs	: 12 × Mic 0.85mV / 2kΩ (Balanced); 2 × Aux 100mV / 220kΩ (Unbalanced); 1 × CD (stereo) 250mV / 20kΩ (Unbalanced); 1 × Line 250mV/20k (Balanced)
MP3 Playback	: Built-in MP3 playback facility (USB, SD and MMC card) Remote Control provided
Headphone	: 200mV at 8Ω
Frequency Response	: 20 - 20,000Hz
Tone Controls	: BASS: ±10dB at 100Hz; TREBLE: ±10dB at 10kHz
S/N Ratio	: 60dB
Power Supply	: AC : 220- 240V, 50/60Hz
Protection	: AC: Fuse 1Amp. (T 1A L)
Dimensions	: W483 x H97 x D283 mm
Weight	: 5.64kg approx.

Design and Specifications are subject to change without notice owing to continuous product up-gradation. Technical specifications are subject to production tolerances.

We cannot be held responsible for printing errors, should they occur. **AHUJA** is a registered trademark of Ahuja Radios in India and other countries.

© Copyright Ahuja Radios, 2016. All rights reserved. Any unauthorized reproduction or use of logos, images or design elements is strictly prohibited by law.

No part of this compilation may be reproduced in any manner or translated without written permission.

TRUSOUND PVT. LTD. • C-89, Sector IV, Noida, Gautam Budh Nagar-201 301 (UP)

Regd. Office : 125E, Okhla Industrial Estate, New Delhi-110 020

Tel.: +91-120-4665665 Fax : +91-120-4665621

E-mail: trusoundsupport@airtelmail.in

0K0009R1