

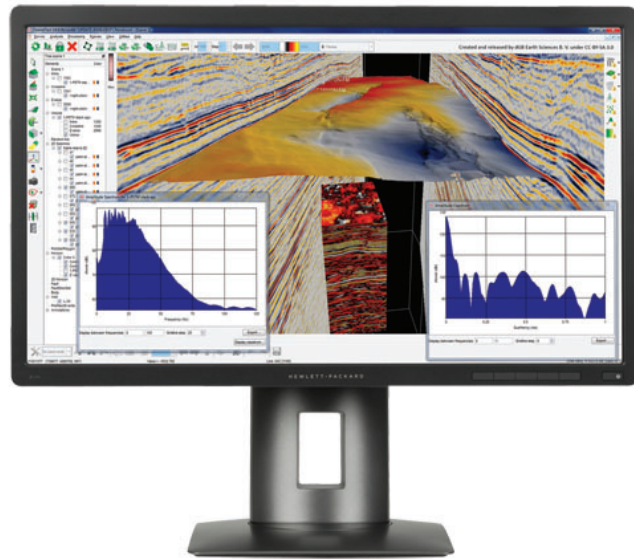
Datasheet

HP Z24s 60,45 cm (23.8") IPS UHD Display



UHD for business and your budget.

Experience ultra high-definition /4K image presentation and factory-calibrated color accuracy out of the box with the HP Z24s 60,45 cm (23.8") IPS UHD Display, which also delivers flexible connectivity and comfort features—all at HP's most affordable HP Z Display price point.



The display that delivers what you demand.

- Get massive 3840 x 2160 resolution, 185 ppi, and sRGB color gamut for your demanding digital workflows. Wide viewing angles and a 60,45 (23.8") diagonal screen help ensure easy line of sight for one or many viewers.

Limitless connectivity.

- Connect your display to a workstation, PC, and range of digital video devices with DisplayPort, mini-DisplayPort, HDMI, and four USB 3.0 ports. Use the two side-located USB ports for easy access to your most-used peripherals.

UHD for every device.

- Instantly mirror your smart phone or tablet content to the large screen through an easy MHL connection that also keeps your devices charged and ready to go.²

Pixels for days.

- Get expansive views of your projects, documents, and media with 8MP—4x that of a Full HD display. View your mobile device and PC feeds side by side in picture-in-picture and picture-by-picture modes.

Additional features

- Find your sweet spot with customizable tilt, height adjustment, swivel, and pivot settings—plus an integrated HP Quick Release that allows you to mount the display on a wall.³
- Design the screen for how you work with HP Display Assistant software.
- Rest assured that your IT investment is supported by a three-year standard limited warranty. To extend your protection beyond the standard limited warranty, select optional HP Care Pack Services.⁴
- Reduce power consumption and help lower costs with an intelligent, energy-efficient design that is ENERGY STAR[®] and TCO qualified, EPEAT[®] Gold registered,⁵ and has mercury-free display backlights, low halogen,⁶ and arsenic-free display glass.

HP Z24s 60,45 cm (23.8") IPS UHD Display Specifications Table



Product Number	J2W50A4; J2W50AT
Product Color	Black
Display size (diagonal)	60,45 cm (23.8")
Display Type	IPS w/LED backlight
Panel Active Area	527.04 x 296.46 mm;
Viewing Angle	178° horizontal; 178° vertical
Brightness	300 cd/m ²
Contrast Ratio	1000:1 static; 5000000:1 dynamic ¹
Response Ratio	14 ms gray to gray ¹
Aspect Ratio	16:9
Native Resolution	3840 x 2160
Resolutions Supported	3840 x 2160; 2560 x 1600; 2560 x 1440; 1920 x 1200; 1920 x 1080; 1680 x 1050; 1600 x 1200; 1600 x 900; 1440 x 900; 1366 x 768; 1280 x 1024; 1280 x 960; 1280 x 800; 1280 x 768; 1280 x 720; 800 x 600; 720 x 480; 720 x 400; 640 x 480
Display Features	Plug and Play; Anti-glare; User programmable; Language selection; On-screen controls; LED Backlights; In plane switching
User Controls	4-button OSD; Menu; Power
Input signal	1 MHL 2.0/HDMI 1.4 (with HDCP support); 1 HDMI 1.4 (with HDCP support); 1 DisplayPort 1.2 (with HDCP support); 1 Mini-DisplayPort
Ports and Connectors	4 USB 3.0 (two side and two rear); 1 audio output
Input power	Input voltage: 90 to 265 VAC
Power consumption	Energy Efficiency Class: C; Panel Active Area: 527.04 x 296.46 mm; On-mode power consumption: 44,0 W; Annual energy consumption: 64,0 kWh; Power consumption (standby): 0,50 W; Power consumption (off-mode): 0,30 W; Power consumption Description: 88 W (maximum), 60 W (typical), 0.5 W (standby); Screen resolution: 3840 x 2160
Dimensions with Stand (W x D x H)	55.61 x 21.02 x 52.68 cm
Dimensions without Stand (W x D x H)	55.61 x 6.97 x 33.53 cm
Weight	6,46 kg (With stand)
Ergonomic features	Tilt: -5 to +20°; Swivel: ±45°; Pivot rotation: 90°
Certification and Compliance	CE; CB; KC/KCC; NOM; PSB; ICE; TUV-S; UL-CSA; CCC; CEL; CECP; SEPA; TCO 6.0; EPA; ISC; VCCI; FCC; Taiwan BSMI; Microsoft WHQL Certification (Windows 8.1 and Windows 7); SmartWay Transport Partnership (NA)
Environmental	Arsenic-free display glass; Mercury-free display backlights; Low halogen ²
Energy Efficiency Compliance	ENERGY STAR [®] certified
Warranty	3-years limited warranty including 3 years of parts and labour. Certain restrictions and exclusions apply.

HP Z24s 60,45 cm (23.8") IPS UHD Display

Accessories and services (not included)

HP Single Monitor Arm



The HP Single Monitor Arm is the perfect desk accessory for your work life. Sleek and streamlined, the HP Single Monitor Arm is designed to complement the way you work.

Product number: BT861AA

HP Dual Output USB Graphics Adapter



Increase screen real estate and productivity with a dual-monitor setup with the HP Dual Output USB Graphics Adapter, featuring DVI-I and DisplayPort outputs to drive displays at high resolutions through a single USB 3.0 B connection to your PC.

Product number: C5U89AA

HP Integrated Work Center Stand for Ultra Slim Desktop and Thin Client



The HP Integrated Work Center Stand is designed to help maximize the use of limited desk space without compromising performance or productivity by accommodating an HP Compaq 6005 Pro, or 8000 Series HP Ultra-slim Desktop PC or an HP Thin Client and most HP 17 to 24-inch (43.18 to 60.96 cm) diagonal LCD monitors (please refer to compatibility in the Quick Spec) with VESA standard mounting brackets.

Product number: E8H16AA

HP Integrated Work Center 3 for Small Form Factor



Maximize your work space with the HP Integrated Work Center for Small Form Factors v3. Customize an "all-in-one" solution by combining an HP Small Form Factor or Workstation with an LED monitor up to 24 diagonal inches.

Product number: F2P06AA

HP Integrated Work Center for Desktop Mini and Thin Client



Make the most of small work spaces with an HP IWC Desktop Mini/Thin Client that lets you create a compact desktop solution by combining a display with an HP Desktop Mini, HP Thin Client or HP Chromebox and giving you convenient front access to all of its inputs.

Product number: G1V61AA

HP 5 year Next business day Onsite Standard Monitor Hardware Support



Receive 5 years of next business day onsite repair from an HP-qualified technician for your computing device, if the issue cannot be solved remotely.

Product number: U7935E

Learn more at
www.hp.eu/hpoptions

HP Z24s 60,45 cm (23.8") IPS UHD Display

Messaging Footnotes

¹ 4K content required.

² MHL 2.0 port will charge a MHL compatible smart phone and tablet battery. Includes a DisplayPort to HDMI dongle to increase connect flexibility. Requires the smart phone or tablet to be enabled for MHL or have an HDMI dongle to connect to the monitor. See your mobile device specifications. Max display resolution is Full HD.

³ Mounting hardware sold separately.

⁴ Service levels and response times for HP Care Packs may vary depending on your geographic location. Service starts on date of hardware purchase. Restrictions and limitations apply. For details, visit www.hp.com/go/cpc. HP Services are governed by the applicable HP terms and conditions of service provided or indicated to Customer at the time of purchase. Customer may have additional statutory rights according to applicable local laws, and such rights are not in any way affected by the HP terms and conditions of service or the HP Limited Warranty provided with your HP Product.

⁵ EPEAT® registered where applicable. EPEAT registration varies by country. See www.epeat.net for registration status by country.

⁶ External power supplies, power cords, cables and peripherals are not Low Halogen. Service parts obtained after purchase may not be Low Halogen.

Technical specifications disclaimers

¹ All specifications represent the typical specifications provided by HP's component manufacturers; actual performance may vary either higher or lower.

² External power supplies, power cords, cables and peripherals are not Low Halogen. Service parts obtained after purchase may not be Low Halogen.

Learn more at

www.hp.eu/monitors

Engage HP Financial Services

Explore monthly payment options and technology refresh plans that can provide more flexibility to help you meet your IT goals. More information on www.hp.com/go/hpfs.

Sign up for updates

www.hp.com/go/getupdated

The product could differ from the images shown. © 2015 Hewlett-Packard Development Company, L.P. The information contained herein is subject to change without notice. Specific features may vary from model to model. The only warranties for HP products and services are set forth in the express warranty statements accompanying such products and services. Nothing herein should be construed as constituting an additional warranty. HP shall not be liable for technical or editorial errors or omissions contained herein.

ENERGY STAR® and the ENERGY STAR® mark are registered trademarks of the U.S. Environmental Protection Agency.

