

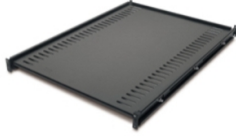
# Product data sheet

Specifications



## Fixed Shelf - 250lbs/114kg, Black

AR8122BLK



### Overview

<b>Presentation</b>	Fixed shelf to enable the mounting of tower units, monitors, and other equipment into the rack environment.
<b>Lead Time</b>	Usually in Stock

### Main

<b>Number Of Rack Unit</b>	1U
<b>Number Of Cables</b>	1
<b>Provided Equipment</b>	Installation guide Mounting Hardware

### Physical

<b>Color</b>	Black
<b>Height</b>	1.73 in (4.4 cm)
<b>Width</b>	18.50 in (47 cm)
<b>Depth</b>	25.98 in (66 cm)
<b>Net Weight</b>	18.03 lb(US) (8.18 kg)
<b>Mounting Location</b>	Front
<b>Mounting Preference</b>	No preference
<b>Mounting Mode</b>	Rack-mounted
<b>Maximum Mounting Depth</b>	32.50 in (82.55 cm)
<b>Minimum Mounting Depth</b>	26.50 in (67.31 cm)
<b>Permanent Permissible Load</b>	250 lb(US) (113.40 kg) static

### Conformance

<b>Standards</b>	EIA-310D
------------------	----------

### Ordering and shipping details

<b>Gtin</b>	731304107842
-------------	--------------

### Packing Units

<b>Unit Type Of Package 1</b>	PCE
<b>Number Of Units In Package 1</b>	1
<b>Package 1 Height</b>	30.51 in (77.5 cm)
<b>Package 1 Width</b>	22.68 in (57.6 cm)

---

<b>Package 1 Length</b>	3.50 in (8.9 cm)
<b>Package 1 Weight</b>	23.01 lb(US) (10.438 kg)

---

## **Contractual warranty**

---

<b>Warranty</b>	2 years repair or replace
-----------------	---------------------------

## Sustainability

**Green Premium™ label** is Schneider Electric's commitment to delivering products with best-in-class environmental performance. Green Premium promises compliance with the latest regulations, transparency on environmental impacts, as well as circular and low-CO<sub>2</sub> products.

[Learn more about Green Premium >](#)



Take-back RoHS/REACH

## Resource performance

Take-Back Program Available

---

## Well-being performance

Reach Free Of Svhc

---

Toxic Heavy Metal Free

---

Mercury Free

---

Rohs Exemption Information [Yes](#)

---

## Certifications & Standards

**Reach Regulation** [REACH Declaration](#)

---

**Eu Rohs Directive** Pro-active compliance (Product out of EU RoHS legal scope)  
[EU RoHS Declaration](#)

---