

[Get a Quote](#)

Overview

Note: The system languages are Chinese (default) and English, and part of the Chinese APP can only be displayed in Chinese.

Xiaomi Mijia 1S Laser Projector TV 4K (MJJGTYDS04FM), 2000ANSI Lumens, Android WIFI,HDR10,Dobby Audio DTS,home theater beamer, It provides you with a good family viewing service

Quick Specs

Table 1 shows the Quick Specs.

Product Code	Xiaomi Mijia 1S Laser Projector TV 4K (MJJGTYDS04FM)
Product Size	410mm x 291mm x 88mm (host)
Product Color	Metallic gray
Display Technology	0.47" DMD
Standard Resolution	4K (3840 x 2160)
Brightness	2000 ANSI lumens (about 6500 lumens)
Lens Focus	Electric focus
Working Voltage	200-240V/50-60Hz
WIFI	Support
Bluetooth	Support
CPU	T968-H
System Language	Chinese (Default), English Note: Part of the Chinese APP can only be displayed in Chinese.

Product Details

Xiaomi Mijia 1S Laser Projector TV 4K (MJJGTYDS04FM) provides these features and benefits:

- 4K ultra-clear picture, TI DLP digital light processing technology, dynamic image HDR10 decoding, wide color gamut distribution, richer colors
- 100+ inch super giant screen, super large projection size, your home is your private theater.
- Ultra-short focus, 0.233:1 throw ratio, the body can project a 100-inch super-large screen with only 24cm away from the wall without wiring.
- ALPD® 3.0, cinema-level laser light source technology, makes the colors of characters more natural and vivid.
- The picture is real and vivid, with 3000:1 contrast ratio, which makes the picture more delicate and vivid.
- High-fidelity audio, DOLBY AUDIO, DTS-HD, dual full-frequency dual high-frequency, powerful Dolby virtual surround and vocal enhancement technology, let your voice be on the scene.
- 2000 ANSI lumen, which is 30% higher than the 4K overall brightness of Xiaomi Mijia laser projector, and the wonderful pictures are still clear under the daytime ambient light.

Xiaomi Mijia Laser Projector 4K 1S



4K quality

150 inch

Ultra short throw

ALPD 3.0

Hi-Fi Audio

2000 ANSI lumens

4K ultra-clear image quality, a feast for the visual senses

The picture resolution has reached an amazing 4K, native contrast ratio of 3000:1, coupled with HDR10 decoding, better supports the presentation of high dynamic range pictures, wide color gamut distribution, and richer colors.



Brightness increased again, without fear of ambient light

Mijia Laser Projection TV 1S 4K is upgraded with a new integrated design optical machine. Compared with the previous generation product (Xiaomi Mijia Laser Projector 4K), the overall brightness is increased by 30%, and the average screen brightness reaches 2000 ANSI lumens, which is wonderful under daytime ambient light. The painting is still clear.



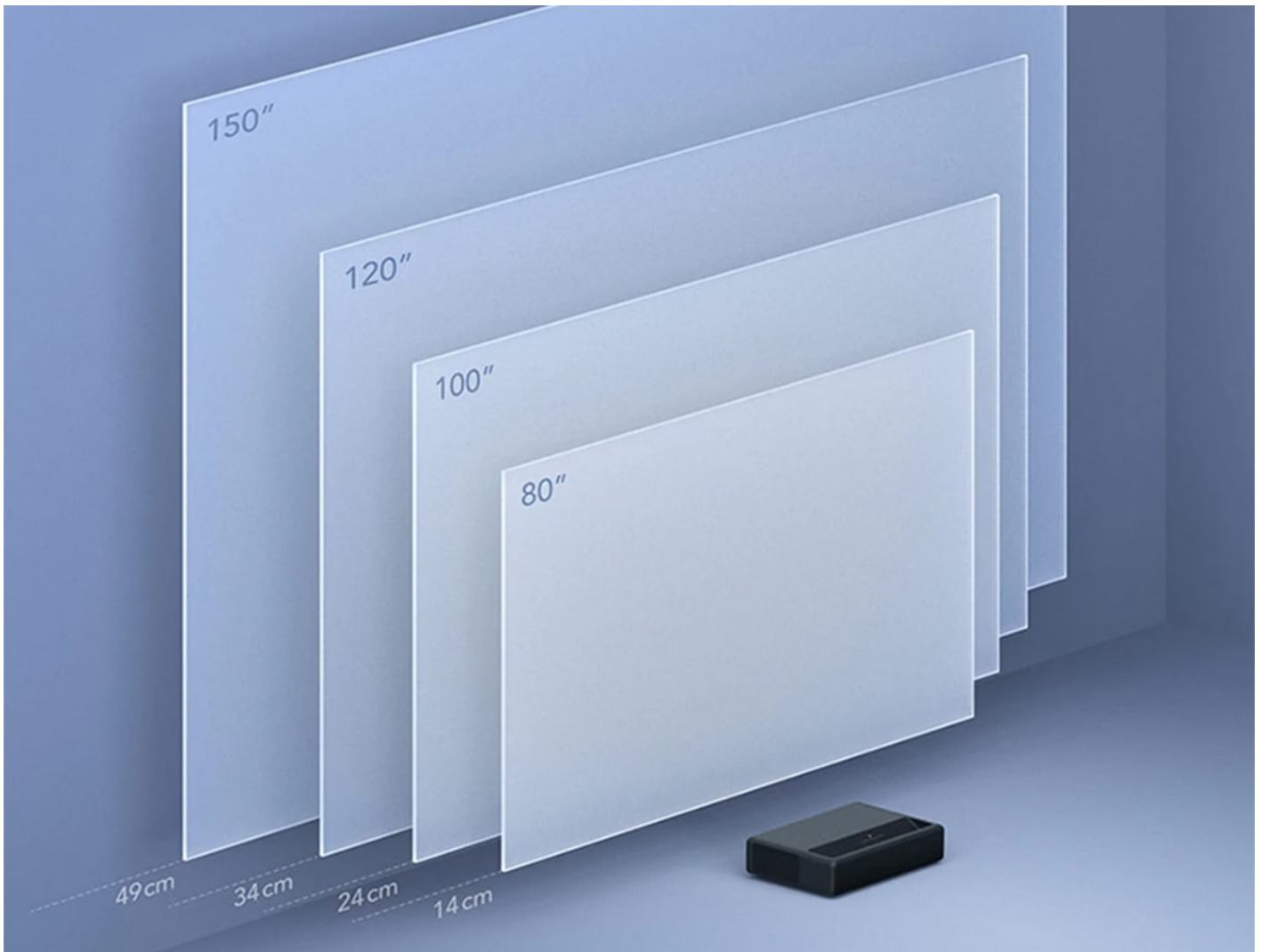
ALPD3.0 display technology, more vivid colors

The domestic laser theaters generally use the ALPD laser fluorescent display technology of Guangfeng Technology to make the colors of the characters more natural and vivid. With the careful adjustment of ISF certified engineers, the color reproduction deviation is ≤ 2.9 , which makes the color performance more realistic.



Ultra short focal lens design

Using 0.233:1 large depth of field ultra-short focal lens design, the body only needs 24cm away from the wall to project a 100-inch super-large picture. No wiring troubles, no indoor space, bid farewell to screen occlusion.



80-150 inch huge picture

Mijia Laser Projection TV 1S 4K can project a large screen of up to 80-150 inches by directly placing it in the TV cabinet. Home is a private cinema



If you look at it, look at it with confidence

There are 1 anti-direct-view sensors on both sides of the lens. When a person approaches, the projection brightness is automatically reduced to the minimum to prevent the laser light source from directing human eyes. The projection image is imaged by the principle of reflection, which effectively reduces the radiation and visual fatigue to the human eye.



Dual full frequency + dual high frequency sound system

Exclusive customized high-fidelity audio system brings a wider stereo sound quality. With the unique design of speaker inverter tube, the sound is more surging.



More real, more immersive

Through the powerful Dolby virtual surround and vocal enhancement technology, you will be completely immersed in the embrace of three-dimensional sound and experience the immersive feeling of being on the scene.

DOLBY AUDIO™

dts-HD®



25000+ hours long light source life

The service life of the light source reaches more than 25,000 hours. It can be used for 4 hours a day and can be used for about 17 years.



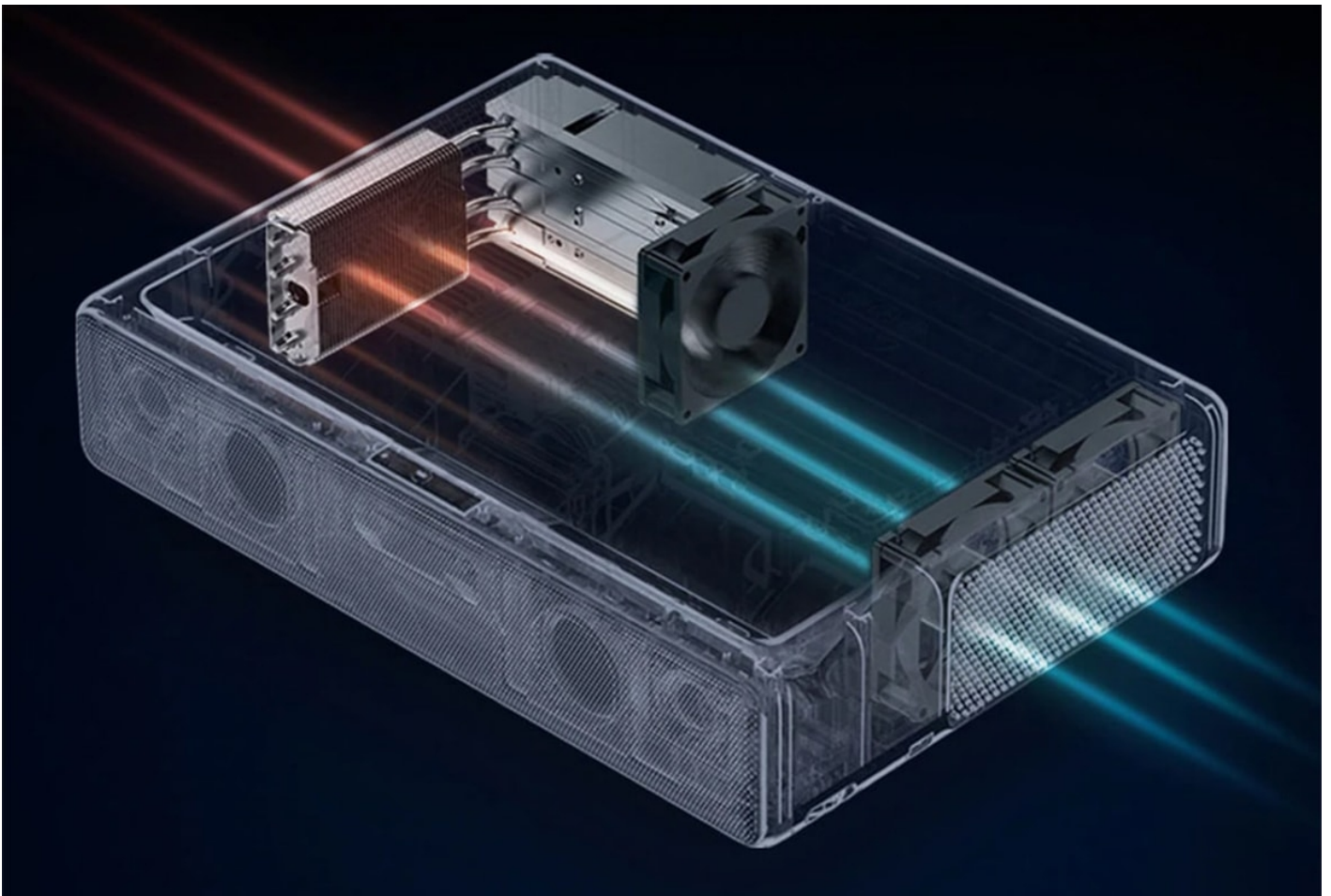
Rich interfaces, one-click projection

3 HDM2.0b ports, fully meet your 4K entertainment needs, hard disk players, U disks, game consoles, computers, TV boxes, speakers, everything can be connected. No third-party projection software is required. Playing mobile games, viewing photos, and displaying office documents on the big screen is easy with one click.



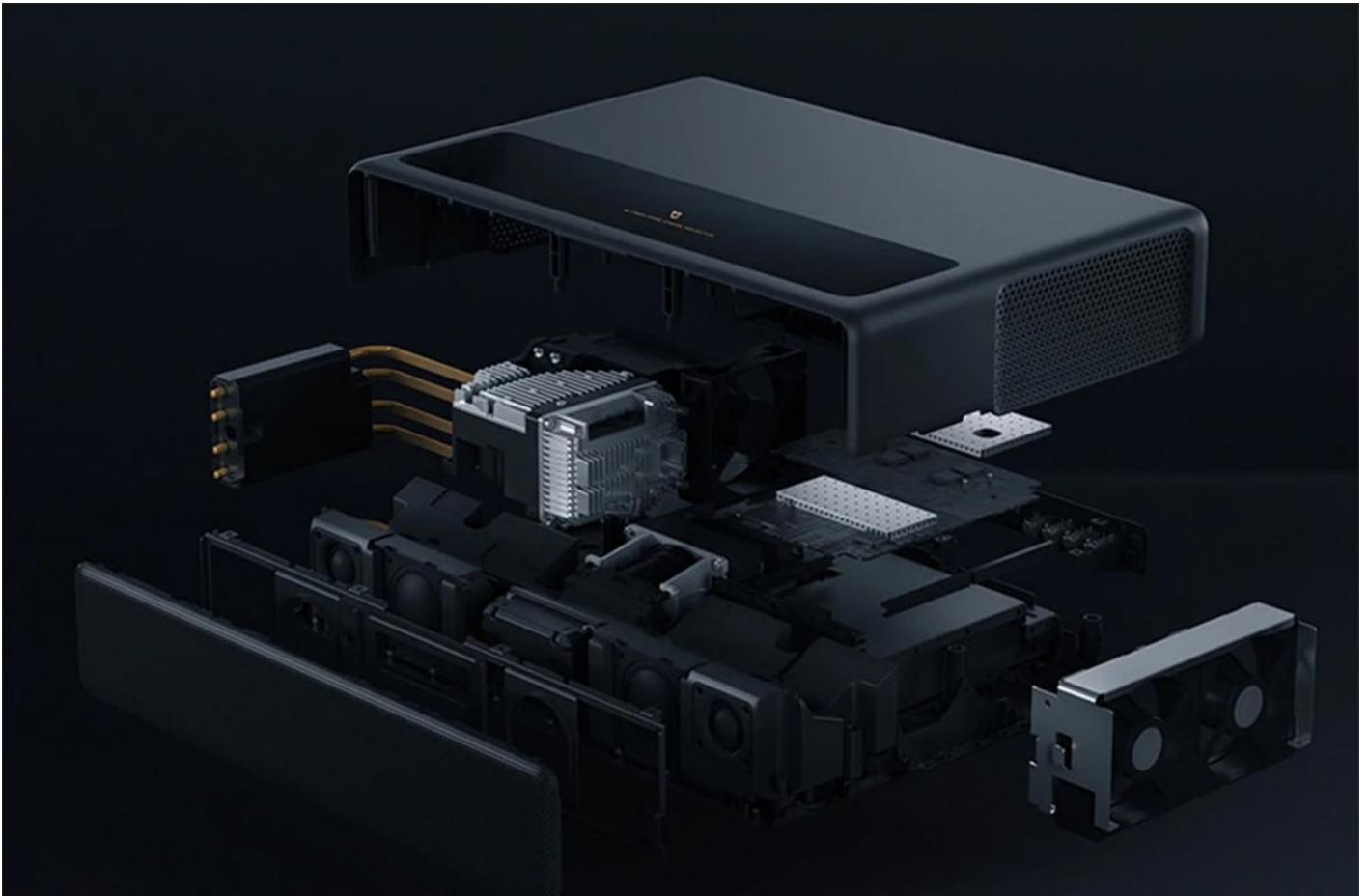
Smart fan, real-time temperature control

System-level temperature monitoring, automatic adjustment of fan power, and high-brightness mode can still maintain low noise operation*. Each module is designed with a special air outlet channel to optimize the airflow direction between the modules, quickly and efficiently send out the heat of the whole machine, and effectively extend the service life of the whole machine.



Fully customized hardware system, lighter weight

Adopting a fully customized modular hardware system, clever use of internal space, tightly arranged rules, reasonable optimization of space, and no space in the home. At the same time, the weight of the whole machine is also reduced to 7kg.



Advanced metallic gray, more refined

The shell is made of sandblasted PC material, no fingerprints are left, and the sense of high quality is always maintained. It adopts a square design, the size of a 15-inch notebook, and the corners are rounded to ensure the safety of children.

410mm × 291mm × 88mm





Packing list

Mijia Laser Projection TV 4K*1

Remote control*1

Power cord*1

Wiping cloth*1

Manual *1

Get more information

Do you have any question about the Xiaomi Mijia 1S Laser Projector TV 4K (MJJGTYDS04FM)?

Contact us now via [Live Chat](#) or sales@router-switch.com

Specification

Xiaomi Mijia 1S Laser Projector TV 4K (MJJGTYDS04FM) Specification	
Product Size	410mm x 291mm x 88mm (host)
Product Weight	7 kg
Product Color	Metallic gray
Display Technology	0.47" DMD
Light Source Technology	ALPD 3.0
Standard Resolution	4K (3840 x 2160)
Brightness	2000 ANSI lumens (about 6500 lumens)
Lens Focus	Electric focus
Throw Ratio (TR)	0.233
Recommended Screen Size	80" -150"
Lens Focus	Electric focus
Keystone Correction	Vertical keystone correction

3D	Not supported
Screen Ratio	16:9
Native Contrast Ratio	3000:1
The Best Projection Distance	14cm-54cm
Lamp Life	25000 hours and above
Noise	<32dB
Working Voltage	200-240V/50-60Hz
WIFI	Support
Bluetooth	Support
CPU	T968-H
RAM	2GB DDR3
Built-in Storage	16GB eMMC high-speed flash memory
CPU	T968-H
RAM	2GB DDR3
Built-in Storage	16GB eMMC high-speed flash memory
System Language	Chinese (Default), English Note: Part of the Chinese APP can only be displayed in Chinese.

Want to Buy

Order Now

Get a Quote

Why Router-switch.com

As a leading network hardware supplier, Router-switch.com focuses on original new ICT equipment of [Cisco](#), [Huawei](#), [HPE](#), [Dell](#), [Hikvision](#), [Juniper](#), [Fortinet](#), etc.



200+

Countries we Sold



18,000+

Customers Trusted



\$20,000,000

Inventory Available



50%-98%

Off Global List Price



100%

Safe Online Shopping

Contact Us

- Tel: +1-626-655-0998 (USA) +852-3050-1066 / +852-3174-6166
- Fax: +852-3050-1066 (Hong Kong)
- Email: sales@router-switch.com