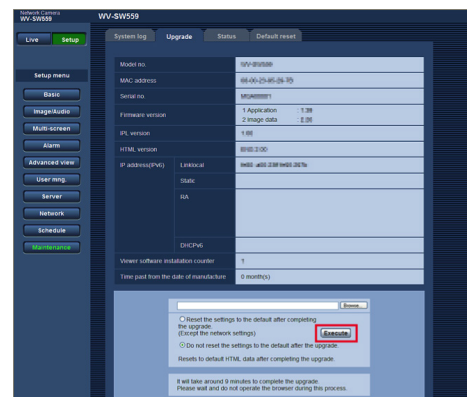
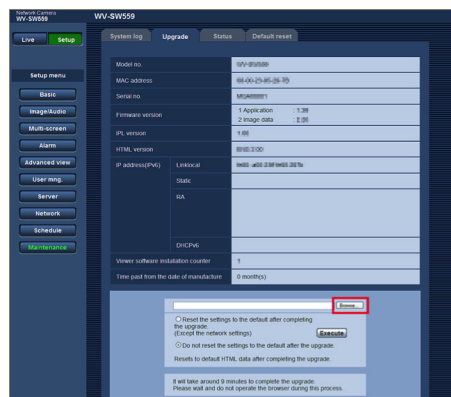
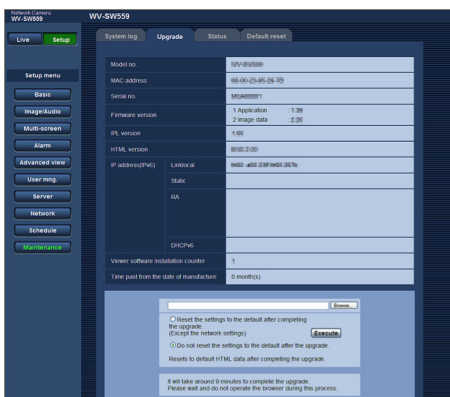


WV-SAE100/200 SOFTWARE ACTIVATION PROCEDURE

STEP 1 SOFTWARE INSTALLATION

Check if the software to be used has been already installed on the PC.

1. Please download the extension software of WV-SAE100/200
2. Please install the software according to the following procedure.



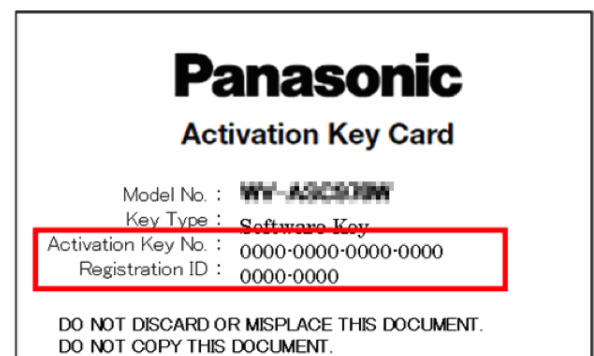
1. Access the camera, and display the setup menu -the "Maintenance" page - the [Upgrade] tab by clicking the corresponding buttons and tab.
2. Click the [Browse...] button and designate the downloaded Extension Software.
3. Click the [Execute] button. The installation of the Extension Software will start. When the installation is completed, the camera will automatically restart.

- Use the file (with an ".ext" extension) specified by Panasonic when installing the Extension Software.
- Do not turn off the power of the camera when installing the software. Do not perform any operations until the installation is completed.

STEP 2 "REGISTRATION KEY" ISSUE

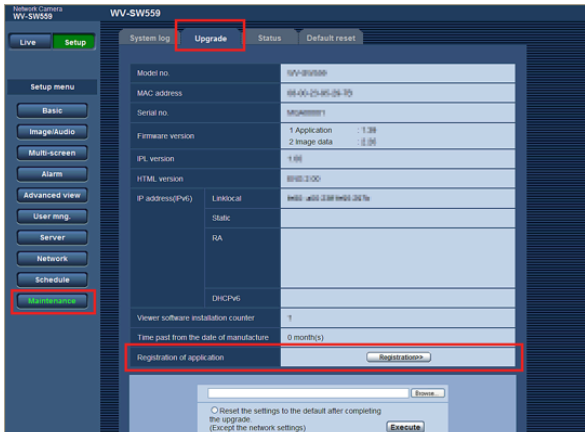
"Activation Key No.," "Registration ID" and "MPR ID" will be required to issue "Registration Key".

Activation Key No." and "Registration ID". Please prepare "Activation Key No." and "Registration ID" written on this Activation Key Card.

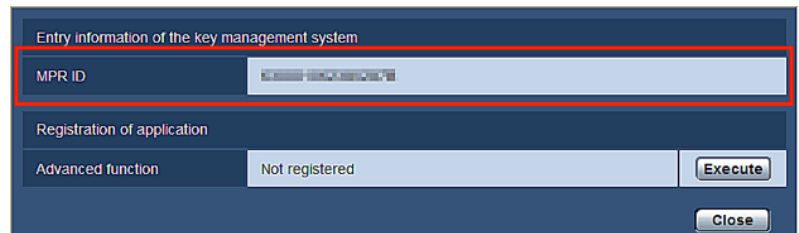


WV-SAE100/200 SOFTWARE ACTIVATION PROCEDURE

“MPR ID”



1. Access the camera, and display the setup menu -the “Maintenance” page - the [Upgrade] tab by clicking the corresponding buttons and tab.



2. Click “Registration of application” -“Registration>>” to display the “Entry information of the key management system” page.

Please access and login to the following URL “Key Management System” from your PC or Mobile Phone.

• For PC :

<https://eww.netreg.panasonic.co.jp/ipkms/pc/home.htm>

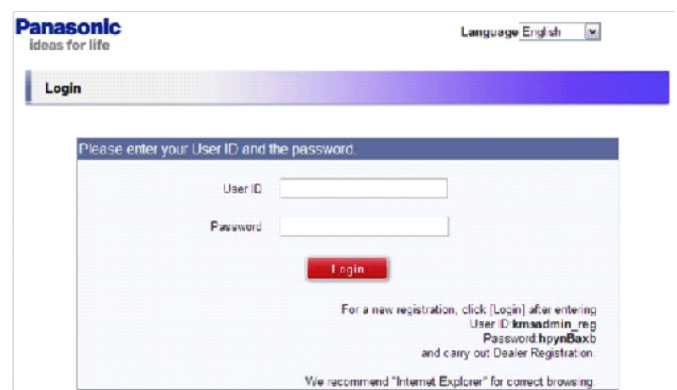
• For mobile :

<https://eww.netreg.panasonic.co.jp/ipkms/m-key/>

* Key Management System may not be used from some mobile phones.

* Key Management System may not be able to be accessed during server maintenance.

Please create your User ID and password, if it is the first time to access this system. Please login as a temporary user using following User ID and password written on the web page.





WV-SAE100/200 SOFTWARE ACTIVATION PROCEDURE

For Dealers - Menu

Issue Registration Key Demo

Issue Registration Key

Issue History

Make Report Search Registration Key

1. Please login using your User ID and password.
Click [Issue Registration Key] button.

STEP 1 Selecting Category

STEP 2 Enter MPR ID

STEP 3 Enter Activation Key No.

STEP 4 Confirm your entry

STEP 5 Issue Registration Key

Select the category to have the Registration Key issued.

- WJ-NV200,NVF20
- WV-ASM200,ASE20*
(To register ASE202/203/204, you need to upgrade to at least Ver1.10 the ASM200.)
- AW-HE50
- WV-ASC970,WV-ASM970,WV-ASF901
- WV-SAE100,SAE200**
- WV-ASF900,WV-ASF901,WV-ASF904,WV-ASE231

Previous Next step

2. Please select "WV-SAE100,SAE200" from the menu and click [Next step] button.

Please have the Activation Key Card to hand before starting the process.

Please enter the MPR ID.
Please confirm the MPR ID is correct before click [Next step] button.

Fields marked with asterisk * are required.

* MPR ID

Manual Enter 1234 -5678 -90AB -CDEF

Paste Enter

* Installation Site Information

Please enter the installation site information as "ABC Inc., ABC Branch Office, 90th Floor". The text length limit is 50 characters * 2 lines.
Click on the [Next] button to save.

DEMO Bank

DEMO Bank Office

To confirm if the installation site information is already registered, enter the MPR ID issued at the time of registration, and click the [Read] button.
If it is already registered, the information will be displayed above.

Read

Previous Next step

3. Please input your "MPR ID", "Installation Site Information" and click [Next step] button.

STEP 1 Selecting Category

STEP 2 Enter MPR ID

STEP 3 Enter Activation Key No.

STEP 4 Confirm your entry

STEP 5 Issue Registration Key

Enter Activation Key No. and Registration ID on #1 card for registering the MPR ID below.

Please confirm the Activation Key No. is correct before move to the next page.

MPR ID C800-0006-2700-E8B3

Installation Site Information DEMO Bank
DEMO Bank Office

Activation Key No. 1111 -1111 -1111 -1111

Registration ID 1111 -1111

Previous Add more End of enter (Go to next step)

Note: If you want to add Activation Key No. more, please click [Add more] button, then repeat this operation.
You are allowed to enter them up to 8 items.

4. Please input "Activation Key No." and "Registration ID."
Click [End of enter(Go to next step)] button.

MPR ID: 1234-5678-90AB-CDEF

No.	Activation Key No.	Product Name	Model No.
1	1111-1111-1111-1111	DEMC-NV991Z	DEMO Network Disk Recorder Vol.1

Existing Activation Key No. List

No.	Activation Key No.	Product Name	Model No.	Issue date (MM/DD/YYYY)
1	1111-1111-1111-1111	DEMC-NV991Z	DEMO Network Disk Recorder Vol.1	08/01/2010

Previous Issue

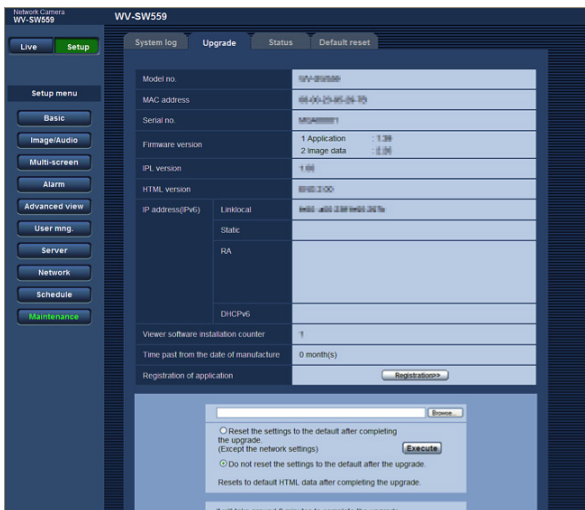
5. Please click the [Issue] button. Then "Registration Key" will be issued on the screen and sent to your e-mail address.

- Please make sure the combination of "Activation Key No." and "MPR ID" is correct when obtaining "Registration Key". Because once you issued "Registration Key", you cannot issue new one from the same "Activation Key No."
- Depending on the configuration of your machine, e-mail may not be able to be viewed correctly.
- If you have any questions, please refer to FAQ on the web site or contact us.
- We recommend keeping "License Key" together with this card for future support.

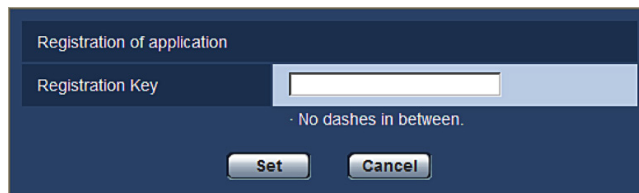
WV-SAE100/200 SOFTWARE ACTIVATION PROCEDURE

STEP 3 PRODUCT ACTIVATION

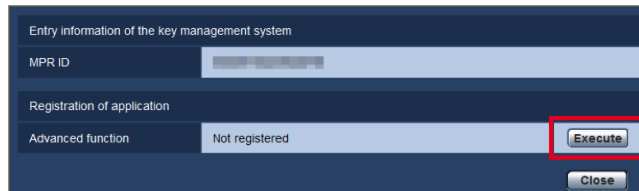
Please activate the product using "Registration Key" issued at Step 2.



1. Access the camera, and display the setup menu -the "Maintenance" page - the [Upgrade] tab by clicking the corresponding buttons and tab.



2. Click "Registration of application" -"Registration>>" to display the "Entry information of the key management system" page.



3. Click the [Execute] button of "Registration of application" to display the "Registration of application" page.

4. Enter the Registration Key obtained in Step 2 in the "Registration Key" field, and click the [Set] button. After the Registration Key is registered, the Extension Software will be validated. Enter the Registration Key without the hyphens (-).