

# HP Z23n 23-inch IPS Display



Create an immersive, virtually seamless multi-display view with the HP Z23n Narrow Bezel IPS Display, which is practically borderless on three sides. It's also factory calibrated for color accuracy between projects and displays and includes flexible device connectivity.



## Continuous, eye-catching imagery.

- Experience extended views from almost anywhere in the room with a panel that is nearly borderless on three sides and has 178-degree viewing angles from IPS technology.

## Consistent, reliable color accuracy.

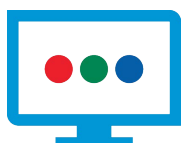
- Deliver optimal color quality across your entire user base with a factory-calibrated 96% sRGB color gamut.

## Failure is not an option.

- Don't just take our word for it. We back the display up with a three-year limited warranty, optional HP Care Pack<sup>1</sup>, and an HP Pixel Defect Policy that will replace the screen if even one bright subpixel fails.<sup>2</sup>

## Featuring

- Keep your PC and device connections close by with integrated HDMI, VGA, DisplayPort, and two USB ports.
- Find your sweet spot with adjustable tilt, height adjustment, and swivel settings. Use pivot rotation to customize portrait or landscape views when using multiple displays. An integrated HP Quick Release Bracket supports wall mounting.<sup>3</sup>
- Maximize your workspace by attaching your HP Desktop Mini, HP Chromebox, or select HP Thin Client directly behind the display.<sup>4</sup> Keep things tidy with an integrated power supply and cable management features.
- Design the screen for how you work, adjust brightness on multiple displays, define and distribute custom settings with an executable file, and deter theft with HP Display Assistant software.
- Reduce power consumption and help lower your costs with an energy-efficient design.



## HP Z23n 23-inch IPS Display Specifications Table



<b>Product Number</b>	M2J79A4
<b>Display Size (diagonal)</b>	58.4 cm (23")
<b>Display Type</b>	IPS w/LED backlight
<b>Panel Active Area</b>	20.04 x 11.27 in; 509.184 x 286.416 mm
<b>Viewing Angle</b>	178° horizontal; 178° vertical
<b>Brightness</b>	250 cd/m <sup>2</sup> <sup>1</sup>
<b>Contrast Ratio</b>	1000:1 static; 5000000:1 dynamic <sup>1</sup>
<b>Response Time</b>	7 ms gray to gray <sup>1</sup>
<b>Aspect Ratio</b>	16:9
<b>Native Resolution</b>	1920 x 1080 @ 60 Hz
<b>Resolutions Supported</b>	1920 x 1080; 1280 x 1024; 1280 x 800; 1440 x 900; 1680 x 1050; 1600 x 900; 1280 x 720; 1024 x 768; 800 x 600; 640 x 480
<b>Display Features</b>	Anti-glare; In plane switching; Language selection; LED Backlights; On-screen controls; Pivot rotation; Plug and Play; User programmable
<b>User Controls</b>	Menu; Minus ("-"); Plus ("+"); Input Contro; OK/Auto; Power
<b>Input Signal</b>	1 VGA; 1 HDMI (with HDCP support); 1 DisplayPort 1.2 (with HDCP support);
<b>Ports and Connectors</b>	3 USB 2.0 (two downstream and one upstream) <sup>1</sup>
<b>Input Power</b>	Input voltage: 100 to 240 VAC
<b>Power Consumption</b>	15 W (maximum), 14 W (typical), 0.5 W (standby); 35 W (maximum), 23 W (typical), 0.5 W (standby)
<b>Dimensions with Stand (W x D x H)</b>	20.5 x 7.44 x 19.16 in 52.08 x 18.9 x 48.66 cm
<b>Dimensions without Stand (W x D x H)</b>	20.5 x 2.06 x 12.28 in 52.08 x 5.23 x 31.2 cm Without stand
<b>Weight</b>	11.02 lb 5 kg With stand
<b>Ergonomic Features</b>	Tilt: -5 to +30°; Swivel: ±45°; Height: 150 mm; Pivot rotation: 90°
<b>Environmental</b>	Arsenic-free display glass; Mercury-free display backlights; Low halogen <sup>2</sup>
<b>Energy Efficiency Compliance</b>	ENERGY STAR® certified
<b>What's in the box</b>	Monitor; AC power cord; USB cable; DisplayPort cable; CD (includes User Guide, warranty, drivers); HP Display Assistant software

See important legal disclaimers on the last page

## Accessories and services (not included)

---

### HP Adjustable Dual Display Stand



The HP Adjustable Dual Display Stand allows you to use two displays to maximize your productivity and optimize efficiency. Either or both displays can be rotated to landscape or portrait orientation, and the stand is depth-, height-, tilt-, and angle-adjustable so you can view both screens at eye-level as well as slightly facing each other, letting you track multiple applications and information sources at the same time. Integrated base rollers let you rotate the stand so you can more easily share your work.

**Product number: AW664AA**

---

### HP Single Monitor Arm



The HP Single Monitor Arm is the perfect desk accessory for your work life. Sleek and streamlined, the HP Single Monitor Arm is designed to complement the way you work.

**Product number: BT861AA**

---

### HP UHD USB Graphics Adapter



Boost your productivity by extending or mirroring your desktop to a UHD display with the HP UHD USB Graphics Adapter.

**Product number: NZU81AA**

---

### HP Business PC Security Lock v2 Kit



Help prevent chassis tampering and secure your PC and display in workspaces and public areas with the HP Business PC Security Lock v2 Kit.

**Product number: N3R93AA**

---

### HP PC Mounting Bracket for Monitors



Customize an altogether better solution with the HP PC Mounting Bracket for Monitors, which lets you attach your HP Desktop Mini, HP Chromebox, or select HP Thin Client directly behind select HP Z Displays and EliteDisplays.

**Product number: N6N00AA**

---

### HP LCD Speaker Bar



The LCD Speaker Bar seamlessly attached to the bezel of the HP Business Monitor and provides full multimedia capabilities.

**Product number: NQ576AA**

---

## Messaging Footnotes

<sup>1</sup> HP Care Packs are sold separately. Service levels and response times for HP Care Packs may vary depending on your geographic location. Service starts on date of hardware purchase. Restrictions and limitations apply. For details, visit [www.hp.com/go/cpc](http://www.hp.com/go/cpc). HP Services are governed by the applicable HP terms and conditions of service provided or indicated to Customer at the time of purchase. Customer may have additional statutory rights according to applicable local laws, and such rights are not in any way affected by the HP terms and conditions of service or the HP Limited Warranty provided with your HP Product.

<sup>2</sup> The HP Pixel Policy allows no bright sub-pixel defects for this display. For complete details, see <http://support.hp.com/us-en/document/c00288895>.

<sup>3</sup> Mounting hardware sold separately.

<sup>4</sup> Requires HP PC Mounting Bracket for Monitors, sold separately. See product QuickSpecs for exact PC and thin client compatibility.

## Technical Specifications Footnotes

<sup>1</sup> All specifications represent the typical specifications provided by HP's component manufacturers, actual performance may vary either higher or lower.

<sup>2</sup> External power supplies, power cords, cables and peripherals are not Low Halogen. Service parts obtained after purchase may not be Low Halogen.

Sign up for updates  
[hp.com/go/getupdated](http://hp.com/go/getupdated)

Learn more at  
[hp.com](http://hp.com)

---

© Copyright 2015 HP Development Company, L.P. The information contained herein is subject to change without notice. The only warranties for HP products and services are set forth in the express warranty statements accompanying such products and services. Nothing herein should be construed as constituting an additional warranty. HP shall not be liable for technical or editorial errors or omissions contained herein.

ENERGY STAR® and the ENERGY STAR® mark are registered trademarks of the U.S. Environmental Protection Agency.

