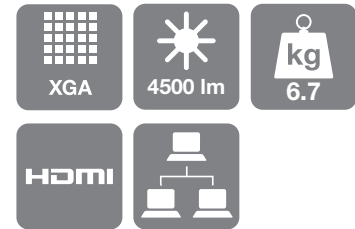


# Epson EB-G5600/NL

## DATASHEET

Launch Date: December 2010



This best-in-class projector is designed and built to meet the exacting requirements of large venue installation.

Designed for large education and corporate venues, the projector has an equally high White and Colour Light Output (CLO) thanks to Epson's 3LCD technology. This means presentations have vivid yet natural colours even in full daylight.

EasyMP Network & Control: Monitor the status of your projector, email the administrator and set up alerts, so the projector emails the administrator in case of any issues. You can also broadcast a message to the network with the included EasyMP Network Projection software.

Product durability is assured and TCO kept to a minimum with the addition of the long-life C<sup>2</sup>Fine Inorganic LCD panel and long-lasting lamp. And for low maintenance, the electrostatic filter can be cleaned or changed quickly. It's also environmentally-friendly, with a paint-free design, lead-free lenses, and recyclable packaging.

The projector is available in two models: the EB-G5600 which comes with the Standard Lens, and the EB-G5600NL which comes without a lens. Five optional lenses are available, allowing you to create the perfect projector to suit particular venues and different types of multimedia content.

## KEY FEATURES

- 3LCD for outstanding picture quality
- 4,500 lumens for bright daylight viewing
- Lens shift
- Straightforward installation and operation
- Low maintenance with long-lasting lamp



**EPSON**  
EXCEED YOUR VISION

## PRODUCT SPECIFICATIONS

PROJECTION TECHNOLOGY	3LCD Technology 0.8 inch with MLA
RESOLUTION	XGA – 1024 x 768 (4:3 aspect ratio) Up to 1080p
WHITE LIGHT OUTPUT * Normal / Eco	4500 / 3600 Lumens
COLOUR LIGHT OUTPUT * Normal / Eco	4500 / 3600 Lumens
CONTRAST	1000:1
LAMP Life (Normal / Eco) Type	2000 / 3000 hours 275W UHE
LENS	EB-G5600: Standard Lens EB-G5600NL: no lens Optional lenses available, see Optional Lens Specifications chart for full details
CONNECTIVITY Video input Audio input Digital input Computer input Control input Computer output Audio output	1 x RCA, 1 x S-Video, 2 x component (via D-sub 15-pin), 1 x HDMI, 1 x 1-BNC 3 x Stereo mini-jack, 1 x RCA (R/L), 1 x HDMI 1 x HDMI 2 x D-sub 15-pin (RGB), 1 x 5-BNC 1 x RJ-45, 1 RS-232C 1 x D-sub 15-pin (RGB) 1 x Stereo mini-jack
ADVANCED FEATURES Security Operation EasyMP features Display	Security cable hole, lens lock, Kensington lock hole, password protection Lens shift, split-screen function, direct power on / off, instant off EasyMP Network & Control 8 colour modes (including DICOM Simulation)
LANGUAGES	English / French / German / Italian / Spanish / Dutch / Portuguese / Danish / Russian / Swedish / Norwegian / Finnish / Polish / Hungarian / Slovenian / Czech / Ukrainian / Romanian / Catalan / Greek / Turkish / Arabic / Japanese / Korean / Traditional Chinese / Simplified Chinese / Thai
NOISE LEVEL Normal / Eco	33dB / 28dB
SOUND	1 x 7 Watt
WEIGHT	6.7kg
DIMENSIONS (W X D X H)	470 x 135 x 311.5mm
POWER CONSUMPTION Normal / Eco Standby	373W / 311W 0.47W
WARRANTY	3 years on the main unit and 1 year on the lamp

\* ISO 21118 based measurement

## PRODUCT LOGISTICS

PROJECTOR MODEL	EB-G5600	EB-G5600NL
SKU CODE		
BARCODE		
WHAT'S IN THE BOX	Projector Standard lens Power cable Computer cable Remote control and batteries Lens cover Cable cover Lens lock cover Password protect sticker Bundled software User's manual set	Projector Power cable Computer cable Remote control and batteries Lens cover Cable cover Lens lock cover Password protect sticker Bundled software User's manual set
GROSS WEIGHT	10.6kg	9.95kg
CARTON DIMENSIONS (L x W x H)	570 x 549 x 282mm	570 x 549 x 282mm

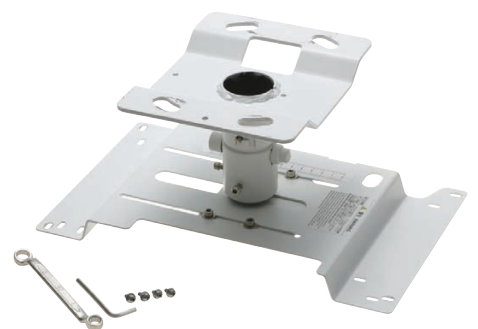
## OPTIONAL LENSES

- **Standard Lens**  
V12H004S05 (ELPLS05)
- **Rear Projection Wide Lens**  
V12H004R03 (ELPLR03)
- **Middle Throw Zoom Lens 1**  
V12H004M04 (ELPLM04)
- **Middle Throw Zoom Lens 2**  
V12H004M05 (ELPLM05)
- **Long Throw Zoom Lens**  
V12H004L06 (ELPLL06)

See *Optional Lens Specifications chart* for full details

## OPTIONAL ACCESSORIES

- **Spare lamp**  
V13H010L62 (ELPLP62)
- **Air filter**  
V13H134A17 (ELPAF17)
- **80-inch pull-up screen 16:10**  
V12H002S24 (ELPSC24)
- **Epson Desktop Visualiser**
- **Epson USB Visualiser**  
V12H321003 (ELPDC06)
- **Ceiling mount**  
V12H003B22 (ELPMB22)
- **Ceiling pipe 668–918mm**  
V12H003P13 (ELPPFP13)
- **Ceiling pipe 918–1168mm**  
V12H003P14 (ELPPFP14)



Tailor-made ceiling mount for easy installation and security



For more information please contact

Telephone: 0871 222 6702 (UK)\*  
01 436 7742 (Republic of Ireland)  
E-mail: enquiries@epson.co.uk  
Chat: etalk.epson-europe.com  
Fax: 0871 222 6740

Web: www.epson.co.uk  
www.epson.ie

Trademarks and registered trademarks are the property of Seiko Epson Corporation or their respective owners. Product information is subject to change without prior notice.

# EPSON®