

# D5600

# DX

**I AM** SPREADING CREATIVITY



[www.nikon-asia.com](http://www.nikon-asia.com)

*At the heart of the image*





• Lens: AF-P DX NIKKOR 18-55mm f/3.5-5.6G VR • Exposure: [A] mode, 1/320 second, f/8 • White balance: Auto • Sensitivity: ISO 250 • Picture Control: Standard ©Mattia Bonavida



• Lens: AF-P DX NIKKOR 18-55mm f/3.5-5.6G VR • Exposure: [A] mode, 1/100 second, f/5 • White balance: Auto • Sensitivity: ISO 640 • Picture Control: Standard ©Mattia Bonavida



• Lens: AF-S DX NIKKOR 10-24mm f/3.5-4.5G ED • Exposure: [A] mode, 1/8 second, f/10 • White balance: Auto • Sensitivity: ISO 800 • Picture Control: Standard ©Mattia Bonavida

## More connected, more creative

Nikon's D5600 digital SLR camera is made for creating in a more connected world. It stays in constant communication with your smart device, working together with the SnapBridge app. Its vari-angle monitor brings fresh perspectives to each scene, while offering a range of intuitive touch operations. Its newly added time-lapse movie function lets you record impressive videos entirely in-camera. And everything you take — whether images or videos — can be transferred to your smart device on-the-go. So go out, get creative, and share your artistic view.

- SnapBridge enables image/video transfers to your smart device
- Vari-angle, 8.1-cm/3.2-in., LCD monitor with touch control allows shooting from creative angles
- Superior image quality delivered by 24.2 effective megapixels and EXPEED 4 image-processing engine
- ISO sensitivity from 100 to 25600 produces beautiful images in a broad range of lighting situations
- 39-point AF system captures moving subjects effectively
- In-camera time-lapse movie transforms scenes into dramatic high-speed sequences
- Compact and lightweight body with a deep grip for comfortable holding of the camera

# D5600

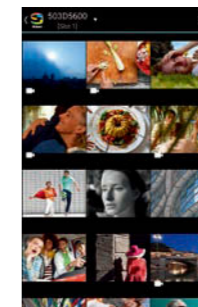




# Transfer and share images with SnapBridge

Share creative D-SLR pictures in real time — SnapBridge makes transferring images to your smart device\*<sup>1</sup> simple

Imagine how easy it would be to post pictures captured from the D-SLR online if they were saved to your smart device as soon as you took them. The SnapBridge application creates a constant connection between the D5600 and a compatible smart device via Bluetooth<sup>®</sup>, enabling automatic transfer of the pictures as you shoot. The image transfer process continues unaffected even when the camera is stored in a bag nearby. It's also possible to transfer images and movies\*<sup>2</sup> via Wi-Fi<sup>®</sup> by selecting the files in the app.



Movies can be transferred by selecting the files in the app

\*<sup>1</sup> The Nikon SnapBridge app must be installed on the device before use.  
 \*<sup>2</sup> Movie transfers are only possible with smart devices that support Wi-Fi.  
 The camera's built-in Wi-Fi<sup>®</sup> capability can only be used when the SnapBridge app is installed on a compatible smart device.

## Camera remote control expands shooting options

The convenience of SnapBridge doesn't stop at automatic image transfers. Using your smartphone screen as a camera monitor, you can release the shutter from a distance. Taking selfies and group shots has never been easier!

Note: Remote shooting with SnapBridge uses Wi-Fi.  
 Remote shooting is only possible with smart devices that support Wi-Fi.  
 Activating Wi-Fi may require some time.  
 Communication distance is approx. 10 m/32 ft, though may vary with signal strength and the presence or absence of obstacles.




## Get your Nikon ID and enjoy free, unlimited automatic uploads of thumbnails to NIKON IMAGE SPACE cloud storage service

As soon as you connect your D5600 and smart device, you can register for your Nikon ID to receive unlimited online storage for thumbnail pictures on NIKON IMAGE SPACE for free. Nikon ID registration\* automatically signs you up as a member of Nikon's online cloud storage service, allowing you the option to upload thumbnail pictures automatically from the SnapBridge app. In addition to unlimited storage of thumbnail pictures, it gives you 20 GB of free storage for original pictures and other large images. So sign up and take full advantage of SnapBridge!



\*If you are a member of NIKON IMAGE SPACE, you can use the same ID and password for your Nikon ID registration.



 **Download the SnapBridge app to get started!**

Take advantage of automatic picture transfers by downloading the SnapBridge app onto your compatible smart device now. The app connects the D5600 with a compatible iPhone<sup>®</sup>, iPad<sup>®</sup>, iPod touch<sup>®</sup> or smart devices running the Android<sup>™</sup> operating system, and is available free from the official website ([snapbridge.nikon.com](http://snapbridge.nikon.com)), Apple App Store<sup>®</sup> and Google Play<sup>™</sup>.

Note: Please visit the SnapBridge website ([snapbridge.nikon.com](http://snapbridge.nikon.com)) for details.

## Establishing a connection is simple — and you only need to do it once

Pairing your D5600 and compatible smart device is simple with SnapBridge. Once you've installed the app, simply touch the NFC mark with your smart device\* then follow the instructions given by the app and camera, and a connection will be automatically established between the two. What's more, the camera automatically detects smart devices that have been connected before, so you only need to go through the process once for each device.

\*Only available with Android NFC-compatible smart devices.



**NIKON IMAGE SPACE**  
[nikonimagespace.com](http://nikonimagespace.com)



6 Low angle

Milano Porta Nuova, project managed by COIMA



High angle



Self-portrait

# Take your creativity further

## Find a fresh point of view — Vari-angle LCD monitor

Discover a new perspective on your subjects, as you capture them creatively from high and low angles. The D5600's vari-angle LCD monitor ensures comfortable live view photography, whatever position you hold the camera in — up high, down low, or turning the monitor toward yourself for a self-portrait. The 8.1-cm/3.2-in. screen opens up to 180° horizontally, and flips up and down from +180° to -90°, with a touch interface that makes it even easier to use.



## Create and share unique video sequences — Time-lapse movie

Time-lapse movie mode, previously only available with advanced models, is now offered by the D5600. This powerful artistic tool lets you transform scenes and subjects into dramatic, high-speed sequences entirely within the camera. The camera's exposure smoothing function helps ensure fluid transitions when capturing scenes where the brightness changes significantly, such as at dawn or dusk. Time-lapse movies created in-camera can be transferred to a smart device through SnapBridge for instant sharing.



## Give your pictures an artistic touch — Special Effects

Turn your stills and movies into unique works of art with Special Effects. In live view shooting, the effects are shown in real time, allowing you to check how they'll look before taking the shot. Combined with the multiple angles delivered by the vari-angle monitor, this gives you endless possibilities for creating unique images.

### Special Effects on the D5600

- Night vision · Super vivid · Pop · Photo illustration\*1 · Toy camera effect · Miniature effect\*2
- Selective color · Silhouette · High key · Low key

\*1 Movies shot in this mode play back like a slide show made up of a series of stills.

\*2 Movies shot in this mode play back at high speed.

Sound is not recorded with movies. The built-in flash and AF-assist illuminator turn off.



Miniature effect



Selective color



Photo illustration

## Create finished pictures on the spot — Retouch menu

Trim, resize or apply filter effects — adding the final touch to images can be done in-camera using the D5600's retouch menu. Simple movie editing is also available.



Painting

### Retouch menus on the D5600

- NEF (RAW) processing · Trim · Resize · D-Lighting · Quick retouch
- Red-eye correction · Straighten · Distortion control · Perspective control · Fisheye · Filter effects · Monochrome · Image overlay
- Color outline · Photo illustration · Color sketch · Miniature effect
- Selective color · Painting · Edit movie · Side-by-side comparison



Lens: AF-P DX NIKKOR 18-55mm f/3.5-5.6G VR • Exposure: [A] mode, 1/250 second, f/8 • White balance: Auto • Sensitivity: ISO 400 • Picture Control: Standard ©Matia Bonavida

# Superb D-SLR image quality

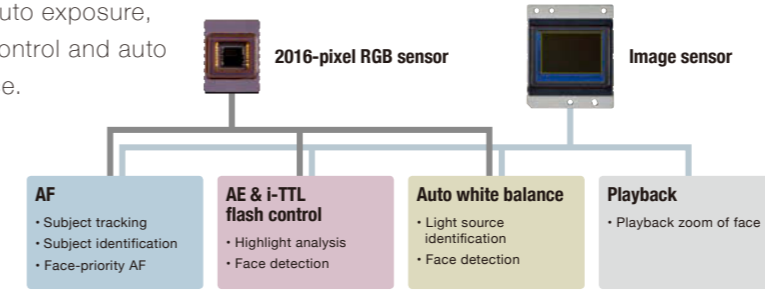
*Pictures that match the reality — Nikon DX-format CMOS image sensor featuring 24.2 effective megapixels, EXPEED 4 image-processing engine, Picture Control and NIKKOR lenses*

Whenever you come across interesting scenes, the D5600 promises to preserve such moments of inspiration in high-quality images. That's thanks to a combination of Nikon technologies working together. The camera's DX-format CMOS image sensor is designed without an optical low-pass filter (OLPF), to bring out the full resolving power of its 24.2 effective megapixels. Combined with the powerful EXPEED 4 image-processing engine and the more faithful rendering of NIKKOR lenses, it achieves exquisite reproduction of details. Finally, there's Nikon's image creation system, Picture Control, which helps you to achieve the desired images.



## Reliable auto control thanks to detailed scene analysis — Scene Recognition System

The D5600 can adapt to a diverse array of shooting and lighting situations. Nikon's exclusive Scene Recognition System uses information from the camera's 2016-pixel RGB sensor and image sensor to analyze the scene, including brightness and color. This sophisticated technology realizes precise control of autofocus, auto exposure, i-TTL flash control and auto white balance.



*Shooting in low light? No problem — Standard ISO from 100 to 25600 with superb noise reduction*

When light is beautiful but scarce, such as in night scenes or dimly lit interiors, the D5600's wide standard ISO range of 100 to 25600 allows you to keep shooting crisp images. Using a high ISO setting also enables you to shoot at faster shutter speeds, letting you take stable pictures without using a flash.



Sensitivity: Auto (ISO 11400)

## Don't let difficult lighting spoil a shot — Active D-Lighting/HDR

When shooting scenes with drastic contrasts in lighting, such as a subject backlit against the sky, the D5600 gives you two options. Active D-Lighting preserves details in highlights and shadows creating photographs with natural contrast, and can be used for moving subjects. HDR\* combines two exposures to form a single image that captures a wide range of tones from shadows to highlights, even with high-contrast subjects.

\*Tripod recommended.



Active D-Lighting: Extra high



HDR: High

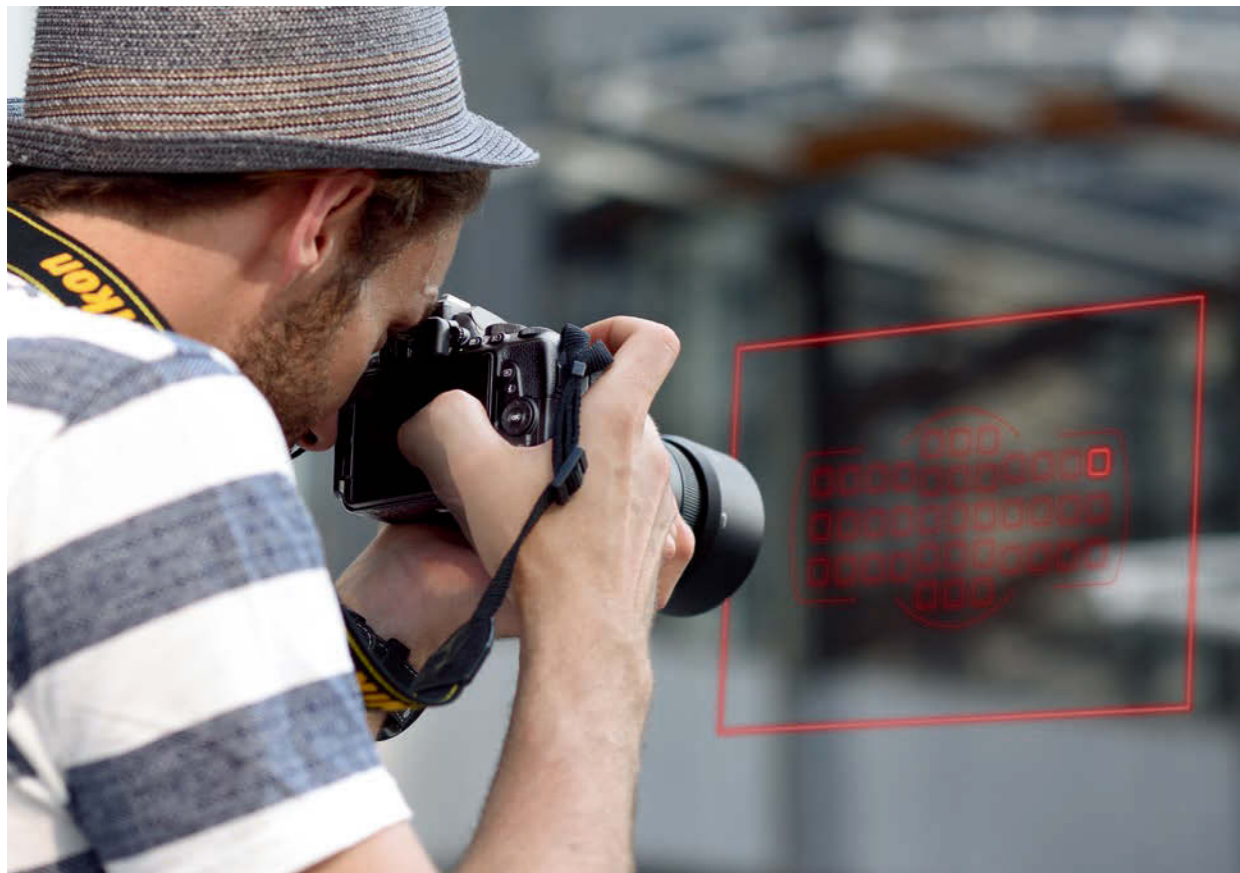


Active D-Lighting: Off



HDR: Off

Note: Images in this section were shot with the D5500.



The focus point can be selected by using the touch Fn function



# Intuitive operation, easy handling

## Varied operations at a touch — Touch screen

The D5600's highly refined touch interface makes a range of operations incredibly intuitive to use. Its newly added frame advance bar (as on the D500 and D5) allows you to scroll through sequences of images at high speed, and it is possible to specify the area of an image to be trimmed by pinching out. The touch Fn feature lets you make adjustments to a pre-assigned camera setting using your thumb, without looking away from the viewfinder, and now includes auto sensitivity control on/off switching. With these features and more, handling the camera comes naturally, just like using a smart device.

### Operations available via the D5600's touch screen



- **Shooting:** Touch shutter, touch AF
- **Setting:** Touch Fn, scene/effect selection, shutter speed and aperture setting, shooting option change, menu operation
- **Playback:** View other images, scroll rapidly to other images (frame advance bar), zoom in (photos only), view thumbnails, view movies

## Battery life lasts for approx. 970 shots per charge: EN-EL14a Rechargeable Li-ion Battery

You don't have to worry about your battery running out while taking pictures with the D5600. Its efficient, energy-saving design allows you to shoot approx. 970 shots per charge\* with the EN-EL14a Rechargeable Li-ion Battery. Even when the camera is constantly connected to your smart device via SnapBridge for automatic image transfer, you can keep going for hours.

Note: Battery power is used for wireless communication even when the camera is turned off. If you do not want to use automatic image transfer, please change the "Send while off" setting to "Off".

\*Based on CIPA Standards. When Bluetooth or Wi-Fi is not used.



EN-EL14a Rechargeable Li-ion Battery

## Designed for maximum portability — Slim, lightweight, carbon-fiber monocoque body with deep grip/Sophisticated exterior

When you're using a camera for extended periods of time, ergonomics are important. The D5600 manages to be small and light, while still offering a deep grip that's stable and comfortable in anyone's hand. The body incorporates a carbon-fiber composite material that's strong and durable, but also remarkably lightweight. This provides the basis for an innovative monocoque structure, where the exterior covers support the interior. The layout of the internal unit is designed to achieve a slim body with an easy-to-hold grip. It's a stylish camera too, with a well-integrated surface, buttons and dials, and high-quality finish.

## Tailor-made modes for each scene — Scene modes/Scene auto selector

If you aren't sure what camera settings to use, you can let the D5600 decide for you. Its 16 scene modes give you optimized settings for a broad range of situations — whether you're at an indoor party or taking shots of pets. When the mode dial is set to Auto or Auto (flash off), activate live view, and the camera will pick the most appropriate mode.



Night landscape

### Scene modes on the D5600

- Portrait · Landscape · Child · Sports · Close up · Night portrait · Night landscape
- Party/indoor · Beach/snow · Sunset · Dusk/dawn · Pet portrait · Candlelight
- Blossom · Autumn colors · Food

### Scene auto selector on the D5600

- Auto\* · Auto (flash off)\* · Portrait · Landscape · Close up · Night portrait
- \*Auto or Auto (flash off) are selected when the camera identifies situations not covered by Portrait, Landscape, Close up or Night portrait mode, or for scenes suited to Auto or Auto (flash off).





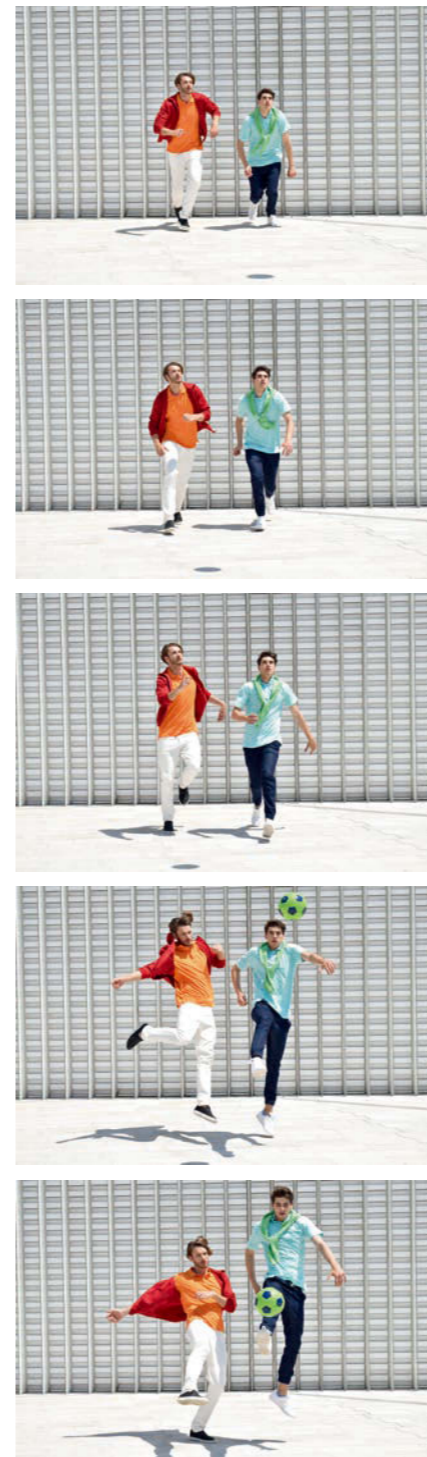
• Lens: AF-P DX NIKKOR 18-55mm f/3.5-5.6G VR • Exposure: [S] mode, 1/1,250 second, f/7.1 • White balance: Auto • Sensitivity: ISO 400 • Picture Control: Standard • ©Mattia Bonavida

# Capture the action in stills and movies

## Seize those split-second moments — 5-fps continuous shooting

Sometimes the best moments last for just the blink of an eye. Fortunately, the D5600 can keep up with the action. Thanks to its high-speed continuous shooting rate of 5 fps\*, you've got a much better chance of capturing the decisive moment — with vivid detail delivered by the high pixel count.

\*Based on CIPA Guidelines.



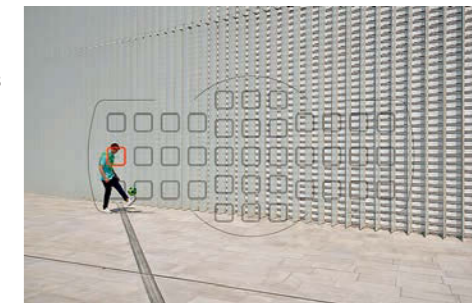
## Get an intimate view of the action — Optical viewfinder

When you're capturing fast-moving action, you want a clear view of what's happening. That's when a D-SLR's optical viewfinder comes in handy. Whether you're shooting a sports match or a rock gig, you can follow your subjects in real time. Viewfinder shooting encourages you to maintain a secure grip of the camera, keeping it level and minimizing shake.



## Keep a lock on fast-moving subjects — 39-point AF system

Some subjects move quickly and erratically. The D5600's autofocus system helps you acquire and keep track of your target with remarkable precision, using 39 focus points that cover a wide area of the frame. Choose from multiple AF-area modes depending on what you're shooting: single-point AF, dynamic-area AF, 3D-tracking and auto-area AF.



## Fast action, rendered amazingly smooth — Full HD D-Movie at 1080/60p

Record all the action in high-quality Full HD at up to 60 frames per second, which renders fast action incredibly smooth. The D5600's vari-angle monitor and in-camera time-lapse movie function help fuel your creativity further, while the NIKKOR lens lineup will give you an extra professional touch.



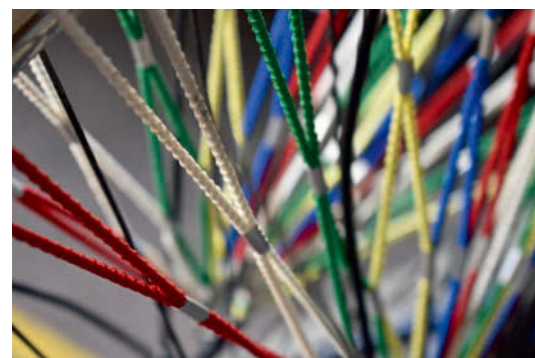
# Broader horizons for your photography

## More lenses, more variety — NIKKOR lenses

There's a very good reason why camera enthusiasts love Nikon: NIKKOR lenses. You'll be happy with the D5600's excellent kit lens, but if you want to diversify your creative options even more, there's a huge range of top-quality lenses to choose from. The NIKKOR lineup has an ideal lens for every scene and subject, each one designed and manufactured according to the strictest standards of optical quality. And they're not just for pros: even beginners will quickly appreciate the difference that NIKKOR lenses make to their still and video shooting.



100 million NIKKOR



**AF-P DX NIKKOR 18-55mm f/3.5-5.6G VR**

This compact and lightweight zoom lens incorporates a stepping motor for fast and quiet AF operation. Two aspherical lens elements minimize lens aberrations, and its Vibration Reduction (VR) system provides an effect equivalent to a shutter speed 4.0 stops\*<sup>1</sup> faster. To prevent unintentional setting changes, AF/MF and VR ON/OFF selection are controlled via camera menus\*<sup>2</sup>.



**AF-S DX NIKKOR 35mm f/1.8G**

Thanks to a maximum aperture of f/1.8, this lens creates striking portraits with beautiful soft backgrounds that make your subject stand out. The large aperture also allows your pictures to turn out great in low light, even without a tripod.



Milano Porta Nuova, project managed by COIMA



**AF-P DX NIKKOR 70-300mm f/4.5-6.3G ED VR**

This telephoto zoom lens offers approx. 4.3x zoom coverage with a stepping motor for fast and quiet AF operation. Its VR system, which can be activated via the D5600's shooting menu\*<sup>2</sup>, provides an effect equivalent to a shutter speed 4.0 stops\*<sup>1</sup> faster, while its ED glass element contributes to achieving superb image quality.



**AF-S DX Micro NIKKOR 40mm f/2.8G**

This compact, lightweight micro lens dynamically captures small subjects, while creating beautiful bokeh. It's perfectly suited for taking stunning close-ups of subjects like flowers or cakes.

\*<sup>1</sup> Based on CIPA Standards. This value is achieved when attached to a DX-format D-SLR camera, with zoom set at the maximum telephoto position.

\*<sup>2</sup> Because focus mode (AF/MF) and VR ON/OFF are set using the camera menus, the number of compatible cameras is limited.

## Dramatic lighting, under your control — Built-in flash/Speedlights (optional)

Lighting is an essential element in photography, but it's not always easy to capture subjects exactly the way you want using only ambient light. The D5600 gives you a comprehensive set of tools to control light and achieve your ideal image. Its built-in flash can produce properly exposed images at night, indoors or with backlighting. Moreover, employing optional flash units, such as the SB-500 Speedlight, gives you additional control for various scenes. By illuminating your subject from one side\*<sup>1</sup>, for example, you can highlight its unique characteristics to create a more dramatic picture.

\*Using a Speedlight off the D5600 requires an SC-28/SC-29 TTL Remote Cord for connection.



Using an SB-500 Speedlight off the D5600  
Milano Porta Nuova, project managed by COIMA



Without SB-500



SB-500 on the D5600

## Operate the camera from a distance — WR-R10/WR-T10 Wireless Remote Controllers (optional)

SnapBridge provides an easy way to operate the camera remotely, but if you want more flexibility, such as for recording movies or consecutive shooting from a distance, WR-R10/WR-T10 Wireless Remote Controllers will come in handy. Utilizing radio waves, they enable remote control over distances of up to 20 m/66 ft\*, allowing you to get close to the action while remaining unobtrusive yourself. This is extremely helpful when you're capturing a sports match or animals in the wild.

\*Approximate range at height of about 1.2 m/4 ft; varies with weather conditions and presence of obstacles.



WR-R10 (Transceiver)

WR-T10 (Transmitter)

## Edit images to your heart's content — Capture NX-D (free download)

The creative process doesn't necessarily end with shooting. Capture NX-D, Nikon's exclusive editing software, draws out the full potential of your images, enabling you to obtain professional-looking results. It offers a wide range of editing options for NEF images (Nikon's RAW image format), including an auto retouch brush that lets you easily remove dust spots on an image, as well as white balance, tone curve and exposure compensation controls. It also allows you to change an image's Picture Control and settings after shooting.



## Browsing software for still images and movies — ViewNX-i (free download)

ViewNX-i offers a convenient way to view your JPEG, RAW and movie files, and work with the files in coordination with other Nikon software. By activating the included ViewNX-Movie Editor software, you can perform simple movie edits, too.





# Nikon Digital SLR Camera D5600 Specifications

Type	Single-lens reflex digital camera
Lens mount	Nikon F mount (with AF contacts)
Effective angle of view	Nikon DX format; focal length equivalent to approx. 1.5x that of lenses with FX-format angle of view
Effective pixels	24.2 million
Image sensor	23.5 x 15.6 mm CMOS sensor
Total pixels	24.78 million
Dust-reduction system	Image sensor cleaning, Image Dust Off reference data (Capture NX-D software required)
Storage	
Image size (pixels)	• 6000 x 4000 (Large) • 4496 x 3000 (Medium) • 2992 x 2000 (Small)
File format	• NEF (RAW): 12- or 14-bit, compressed • JPEG: JPEG-Baseline compliant with fine (approx. 1:4), normal (approx. 1:8) or basic (approx. 1:16) compression • NEF (RAW) + JPEG: Single photograph recorded in both NEF (RAW) and JPEG formats
Picture Control System	Standard, Neutral, Vivid, Monochrome, Portrait, Landscape, Flat; selected Picture Control can be modified; storage for custom Picture Controls
Media	SD (Secure Digital) and UHS-I compliant SDHC and SDXC memory cards
File system	DCF 2.0, Exif 2.3, PictBridge
Viewfinder	Eye-level pentamirror single-lens reflex viewfinder
Frame coverage	Approx. 95% horizontal and 95% vertical
Magnification	Approx. 0.82x (50 mm f/1.4 lens at infinity, -1.0 m <sup>-1</sup> )
Eye point	17 mm (-1.0 m <sup>-1</sup> ); from center surface of viewfinder eyepiece lens)
Diopter adjustment	-1.7 to +0.5 m <sup>-1</sup>
Focusing screen	Type B BriteView Clear Matte Mark VII screen
Reflex mirror	Quick return
Lens aperture	Instant return, electronically controlled
Lens	
Autofocus support	Autofocus is available with AF-S, AF-P and AF-I lenses
Shutter	
Type	Electronically controlled vertical-travel focal-plane shutter
Speed	1/4000 to 30 s in steps of 1/3 or 1/2 EV, bulb, time
Flash sync speed	X=1/200 s; synchronizes with shutter at 1/200 s or slower
Release	
Release modes	[S] (single frame), [C] (continuous low speed), [H] (continuous high speed), [Q] (quiet shutter-release), [t] (self-timer); interval timer photography supported
Frame advance rate	[M]: Up to 3 fps, [H]: Up to 5 fps (JPEG and 12-bit NEF/RAW) or 4 fps (14-bit NEF/RAW) Note: Frame rates assume continuous-servo AF, manual or shutter-priority auto exposure, a shutter speed of 1/250 s or faster, Release selected for Custom Setting a1 (AF-C priority selection), and other settings at default values
Self-timer	2 s, 5 s, 10 s, 20 s; 1 to 9 exposures
Exposure	
Metering	TTL exposure metering using 2016-pixel RGB sensor
Metering method	• Matrix: 3D color matrix metering II (type G, E and D lenses); color matrix metering II (other CPU lenses) • Center-weighted: Weight of 75% given to 8-mm circle in center of frame • Spot: Meters 3.5-mm circle (about 2.5% of frame) centered on selected focus point
Range (ISO 100, f/1.4 lens, 20°C/68°F)	• Matrix or center-weighted metering: 0 to 20 EV • Spot metering: 2 to 20 EV
Exposure meter coupling	CPU
Modes	Auto modes (☞ auto, ☞ auto [flash off]); programmed auto with flexible program (P), shutter-priority auto (S), aperture-priority auto (A), manual (M), scene modes (☞ portrait, ☞ landscape, ☞ child, ☞ sports, ☞ close up, ☞ night portrait, ☞ night landscape, ☞ party/indoor, ☞ beach/snow, ☞ sunset, ☞ dusk/dawn, ☞ pet portrait, ☞ candlelight, ☞ blossom, ☞ autumn colors, ☞ food); special effects modes (☞ night vision, V1 super vivid, PFP pop, ☞ photo illustration, ☞ toy camera effect, ☞ miniature effect, ☞ selective color, ☞ silhouette, ☞ high key, ☞ low key)

Exposure compensation	Can be adjusted by -5 to +5 EV in increments of 1/3 or 1/2 EV in P, S, A, M, SCENE and ☞ modes
Exposure lock	Luminosity locked at detected value with ☞ (O-N) button
(Recommended Exposure Index)	ISO 100 to 25600 in steps of 1/3 EV; auto ISO sensitivity control available
Active D-Lighting	Auto, extra high, high, normal, low, off
Focus	
Autofocus	Nikon Multi-CAM 4800DX autofocus sensor module with TTL phase detection, 39 focus points (including 9 cross-type sensors), and AF-assist illuminator (range approx. 0.5 to 3 m/1 ft 8 in. to 9 ft 10 in.)
Detection range	-1 to 19 EV (ISO 100, 20°C/68°F)
Lens servo	• Autofocus (AF): Single-servo AF (AF-S); continuous-servo AF (AF-C); auto AF-S/AF-C selection (AF-A); predictive focus tracking activated automatically according to subject status • Manual focus (MF): Electronic rangefinder can be used
Focus point	Can be selected from 39 or 11 focus points
AF-area modes	Single-point AF, 9-, 21- or 39-point dynamic-area AF, 3D-tracking, auto-area AF
Focus lock	Focus can be locked by pressing shutter-release button halfway (single-servo AF) or by pressing ☞ (O-N) button
Flash	
Built-in flash	☞, ☞, ☞, ☞, ☞, ☞, VI, PFP, ☞, ☞: Auto flash with auto pop-up P, S, A, M, H: Manual pop-up with button release
Guide number	Approx. 12/39, 12/39 with manual flash (m/ft., ISO 100, 20°C/68°F)
Flash control	TTL: i-TTL flash control using 2016-pixel RGB sensor is available with built-in flash; i-TTL balanced fill-flash for digital SLR is used with matrix and center-weighted metering, standard i-TTL flash for digital SLR with spot metering
Flash modes	Auto, auto with red-eye reduction, auto slow sync, auto slow sync with red-eye reduction, fill-flash, red-eye reduction, slow sync, slow sync with red-eye reduction, rear-curtain with slow sync, rear-curtain sync, off
Flash compensation	Can be adjusted by -3 to +1 EV in increments of 1/3 or 1/2 EV in P, S, A, M and SCENE modes
Flash-ready indicator	Lights when built-in flash or optional flash unit is fully charged; blinks after flash is fired at full output
Accessory shoe	ISO 518 hot-shoe with sync and data contacts and safety lock
Nikon Creative Lighting System (CLS)	Nikon CLS supported
Sync terminal	AS-15 Sync Terminal Adapter (available separately)
White balance	Auto, incandescent, fluorescent (7 types), direct sunlight, flash, cloudy, shade, preset manual, all except preset manual with fine-tuning
Bracketing	
Bracketing types	Exposure, white balance and ADL
Live view	
Lens servo	• Autofocus (AF): Single-servo AF (AF-S); full-time-servo AF (AF-F) • Manual focus (MF)
AF-area modes	Face-priority AF, wide-area AF, normal-area AF, subject-tracking AF
Autofocus	Contrast-detect AF anywhere in frame (camera selects focus point automatically when face-priority AF or subject-tracking AF is selected)
Automatic scene selection	Available in ☞ and ☞ modes
Movie	
Metering	TTL exposure metering using main image sensor
Metering method	Matrix
Frame size (pixels) and frame rate	• 1920 x 1080: 60p (progressive), 50p, 30p, 25p, 24p • 1280 x 720: 60p, 50p Actual frame rates for 60p, 50p, 30p, 25p and 24p are 59.94, 50, 29.97, 25 and 23.976 fps respectively; options support both *high and normal image quality
File format	MOV
Video compression	H.264/MPEG-4 Advanced Video Coding
Audio recording format	Linear PCM
Audio recording device	Built-in or external stereo microphone; sensitivity adjustable

ISO sensitivity	ISO 100 to 25600
Maximum length	29 min. 59 s
Other option	Time-lapse movies
Monitor	
Monitor	8.1-cm/3.2-in. (3.2), approx. 1037k-dot (720 x 480 x 3 = 1,036,800 dots), TFT vari-angle LCD touch screen with 170° viewing angle, approx. 100% frame coverage, brightness adjustment and eye-sensor controlled on/off
Playback	
Playback	Full-frame and thumbnail (4, 12 or 80 images or calendar) playback with playback zoom, playback zoom cropping, playback face zoom, movie playback, photo and/or movie slide shows, histogram display, highlights, photo information, location data display, auto image rotation, picture rating and image comment (up to 36 characters)
Interface	
USB	Hi-Speed USB with Micro-USB connector; connection to built-in USB port is recommended
HDMI output	Type C HDMI connector
Accessory terminal	Wireless remote controllers: WR-1 and WR-R10, Remote cord: MC-DC2, GPS unit: GP-1/GP-1A (all available separately)
Audio input	Stereo mini-pin jack (3.5-mm diameter); supports optional ME-1 Stereo Microphone
Wireless/Bluetooth	
Wireless	• Standards: IEEE 802.11b, IEEE 802.11g • Operating frequency: 2412 to 2462 MHz (channels 1 to 11) • Authentication: Open system, WPA2-PSK
Bluetooth	Communication protocols: Bluetooth Specification Version 4.1
Range (line of sight)	Approx. 10 m/32 ft without interference; range may vary with signal strength and presence or absence of obstacles
NFC	
Operation	NFC Forum Type 3 Tag
Supported languages	
Supported languages	Arabic, Bengali, Bulgarian, Chinese (Simplified and Traditional), Czech, Danish, Dutch, English, Finnish, French, German, Greek, Hindi, Hungarian, Indonesian, Italian, Japanese, Korean, Marathi, Norwegian, Persian, Polish, Portuguese (Portugal and Brazil), Romanian, Russian, Serbian, Spanish, Swedish, Tamil, Telugu, Thai, Turkish, Ukrainian, Vietnamese
Power source	
Battery	One EN-EL14a Rechargeable Li-ion Battery
AC adapter	EH-Sb AC Adapter; requires EP-5A Power Connector (available separately)
Tripod socket	
Tripod socket	1/4 in. (ISO 1222)
Dimensions/weight	
Dimensions (W x H x D)	Approx. 124 x 97 x 70 mm/4.9 x 3.9 x 2.8 in.
Weight	Approx. 465 g/1 lb 0.4 oz with battery and memory card but without body cap; approx. 415 g/14.7 oz (camera body only)
Operating environment	
Operating environment	Temperature: 0 to 40°C/32 to 104°F; humidity: 85% or less (no condensation)
Accessories	
Supplied accessories	EN-EL14a Rechargeable Li-ion Battery, MH-24 Battery Charger, DK-25 Rubber Eyecup, AN-DC3 (may differ by country or area), Camera Strap, BF-1B Body Cap

• The SD, SDHC and SDXC logos are trademarks of the SD-3C, LLC. • PictBridge is a trademark. • HDMI, the HDMI logo and High-Definition Multimedia Interface are trademarks or registered trademarks of HDMI Licensing, LLC. • Apple®, iPhone®, iPad®, iPod touch® and App Store® are trademarks of Apple Inc., registered in the U.S. and other countries. • Android™ and Google Play™ are trademarks of Google Inc. • The Bluetooth® word mark and logos are registered trademarks owned by Bluetooth SIG, Inc., and any use of such marks by Nikon Corporation is under license. • Wi-Fi® and the Wi-Fi logo are trademarks or registered trademarks of the Wi-Fi Alliance®. • N-Mark is a trademark or registered trademark of NFC Forum, Inc., in the United States and/or other countries. • Other products and brand names are trademarks or registered trademarks of their respective companies. • Images in viewfinders, on LCDs and monitors shown in this material are simulated.



Specifications and equipment are subject to change without any notice or obligation on the part of the manufacturer. November 2016 © 2016 Nikon Corporation

**WARNING**

**TO ENSURE CORRECT USAGE, READ MANUALS CAREFULLY BEFORE USING YOUR EQUIPMENT.**  
SOME DOCUMENTS CAN BE DOWNLOADED FROM [downloadcenter.nikonimglib.com](http://downloadcenter.nikonimglib.com).



**Nikon Singapore Pte Ltd** 60 Anson Road, Unit #09-01 Mapletree Anson, Singapore 079914 [www.nikon.com.sg](http://www.nikon.com.sg)  
**Nikon Hong Kong Ltd.** Suite 1001, 10F, Cityplaza One, 1111 King's Road, Taikoo Shing, Hong Kong [www.nikon.com.hk](http://www.nikon.com.hk)  
**Nikon (Malaysia) Sdn. Bhd.** Unit 100.07.015, Block J, Level 7, 129 Offices, Jaya One, No. 72A, Jalan Universiti, 46200 Petaling Jaya, Selangor Darul Ehsan, Malaysia [www.nikon.com.my](http://www.nikon.com.my)  
**Nikon Australia Pty Ltd.** Suite 501, Level 5, 5 Rider Boulevard, Rhodes, NSW 2138, Australia [www.nikon.com.au](http://www.nikon.com.au)  
**Nikon India Private Limited** Plot No. 71, Sector 32, Institutional Area, Gurgaon 122001, Haryana, India (CIN-74999HR2007FTC036820) [www.nikon.co.in](http://www.nikon.co.in)  
**Nikon Sales (Thailand) Co., Ltd.** 1 Empire Tower, 45th Floor, River Wing East, South Sathorn Rd, Yannawa, Sathorn, Bangkok 10120, Thailand [www.nikon.co.th](http://www.nikon.co.th)  
**Nikon Middle East FZE** Level 4, The Galleries Bldg. 2, Downtown Jebel Ali, P.O. Box 261908, Dubai, UAE [www.nikon-me.com](http://www.nikon-me.com)  
**PT Nikon Indonesia** 35th Floor, Wisma 46 - Kota BNI, Jl. Jend. Sudirman Kav.1, Jakarta, 10220, Indonesia [www.nikon.co.id](http://www.nikon.co.id)  
**NIKON CORPORATION** Shinagawa Intercity Tower C, 2-15-3, Konan, Minato-ku, Tokyo 108-6290, Japan [www.nikon.com](http://www.nikon.com)