



At the heart of the image

# D5300

Capture  
Exquisitely.  
Connect  
Immediately.



24.2 Megapixels  
without OLPF

Image-Processing Engine *EXPEED 4*

Built-in Wi-Fi®

Built-in GPS



# Capture Exquisitely. Connect Immediately.

**24.2**  
Megapixels  
without OLPF

**EXPEED**  
**4**

Get ready to shoot something special. With the all-new Nikon D5300 as your guide, the world of Nikon D-SLR photography

just became even more exciting. Experience outstanding D-SLR image quality with 24.2 effective megapixels, an exceptionally high pixel count delivering excellent resolution and depth of detail. Take advantage of Nikon's exclusive technological advances, such as the new EXPEED 4 image-processing engine and Picture Control. Marvel at the exquisite sharpness of NIKKOR lenses, the same lens brand favored by many professional photographers around the world. With all of these elements working together, the D5300 shoots the kind of pictures and movies you've always wanted to create, all while making the entire process fast and fun. Your pictures are then ready to share immediately using the built-in Wi-Fi® to connect with smart devices. Now is the time for amazing pictures and movies. Now is the moment to broadcast your story. With the D5300, the power is in your hands.



Share your pictures quickly with built-in Wi-Fi®



• Lens: AF-S DX NIKKOR 16-85mm f/3.5-5.6G ED VR • Image quality: 14-bit RAW (NEF) • Exposure: [M] mode, 1/60 second, f/11 • White balance: Auto • Sensitivity: ISO 100 • Picture Control: Standard ©Kwaku Alston

# D5300





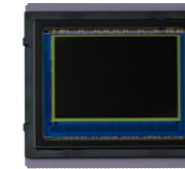
# Step up to a whole new level of image quality

Nikon makes it possible with the perfect combination of image sensor, image-processing engine, Picture Control technology and NIKKOR lenses

## 24.2 Megapixels without OLPF **High-pixel-count sensor: where the sharpness begins**

Thanks in part to an extremely high pixel count, the D5300 achieves amazingly sharp, rich details and smooth, natural skin tones. One of the main contributors to superior image quality is D5300's newly developed cutting-edge Nikon DX-format CMOS image sensor\*.

Incredible color. Incredible detail. When it comes to preserving your most cherished memories, the D5300 delivers both.



CMOS sensor

\*Designed without an optical low-pass filter (OLPF). This fully brings out the resolving power of the high-pixel-count image sensor, combined with a more faithful rendering of NIKKOR lenses, delivering exquisite detail reproduction.

## EXPEED 4 **Faithful color reproduction, low noise and fast operational speeds**

The full potential of the 24.2 effective megapixels is on your side. Nikon's new EXPEED 4 image-processing engine gives your pictures and movies exquisite color. This unique system runs through countless operations at lightning-fast speeds to produce images of exceptional quality. Expect less noise, more faithful tones and true blacks, even when shooting in low light or dimly lit interiors. Nikon's exclusive technology also helps the D5300 achieve a standard ISO sensitivity range of 100 to 12800, and it's extendable to an ISO 25600 equivalent (Hi 1), so you can avoid the effects of camera shake by using faster shutter speeds in low light. It also delivers outstanding color reproduction and tonal gradation at all sensitivity ranges. Even at high ISO settings, Nikon's superior noise-reduction function realizes beautiful textures with minimized color noise. EXPEED 4 manages massive amounts of data at surprisingly high speeds, so you can enjoy uninterrupted shooting, knowing that the camera is handling all of the hard work for you.



EXPEED 4

## Lenses **Uncompromising optical quality**

Choose from a wide variety of NIKKOR lenses to get the creative look you want. Trusted by many of the world's top professional photographers, NIKKOR lenses render images with unmatched sharpness and definition, and make a visible difference when combined with Nikon cameras, making them the perfect companion to cameras like the D5300 with high-resolution image sensors.



**NIKKOR**  
Capture more. Create more.

## Picture Control **Create personalized tone and color with Picture Control**

Customize the look of your pictures and movies using Nikon's unique Picture Control system. Choose from six settings\*: Standard, Neutral, Vivid, Monochrome, Portrait and Landscape. Thanks to the EXPEED 4 image-processing engine's improved color reproduction, the D5300 provides cleaner, more beautiful images. You can manually adjust sharpness or contrast, and the effects can be confirmed, even during live view.

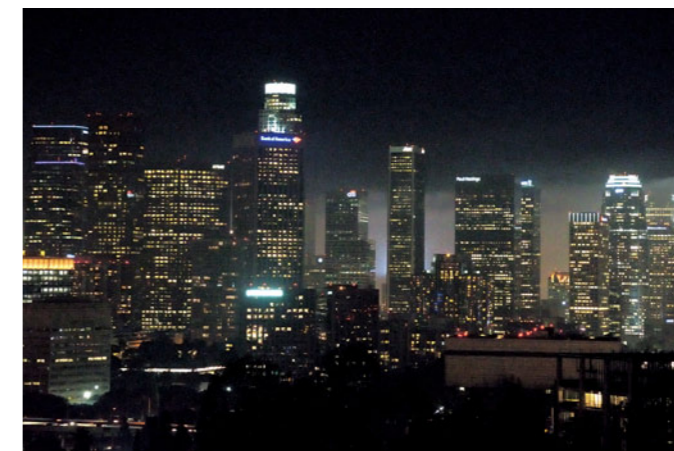
\*Selectable in P, S, A and M modes. The camera selects a suitable Picture Control setting automatically in other shooting modes.



**PICTURE CONTROL**



Vivid



• Lens: AF-S DX NIKKOR 18-140mm f/3.5-5.6G ED VR  
• Image quality: 14-bit RAW (NEF) • Exposure: [M] mode, 1/20 second, f/8 • White balance: Auto  
• Sensitivity: ISO 12800 • Picture Control: Standard  
©Kwaku Alston

©Kwaku Alston  
• Lens: AF-S DX NIKKOR 35mm f/1.8G • Image quality: 14-bit RAW (NEF) • Exposure: [M] mode, 1/60 second, f/3.2 • White balance: Auto • Sensitivity: ISO 200 • Picture Control: Portrait

# Share the moment now, beautifully and simply



• Lens: AF-S DX Micro NIKKOR 40mm f/2.8G • Image quality: 14-bit RAW (NEF) • Exposure: [M] mode, 1/500 second, f/2.8 • White balance: Auto • Sensitivity: ISO 100 • Picture Control: Standard ©Kwaku Alston



• Lens: AF-S DX NIKKOR 16-85mm f/3.5-5.6G ED VR • Image quality: 14-bit RAW (NEF) • Exposure: [A] mode, 1/2000 second, f/4 • White balance: Auto • Sensitivity: ISO 125 • Picture Control: Standard ©Kwaku Alston



• Lens: AF-S DX NIKKOR 18-140mm f/3.5-5.6G ED VR • Image quality: 14-bit RAW (NEF) • Exposure: [M] mode, 1/200 second, f/9 • White balance: Auto • Sensitivity: ISO 100 • Picture Control: Standard ©Kwaku Alston

## Built-in Wi-Fi® Send your best shots with just a few simple steps

Let the picture sharing begin: the D5300 has Wi-Fi® built in. No wires or attachments are necessary – all you need is your camera and your smart device. Simply pick the images you want and they will be ready to send to your smartphone or tablet. You can also transfer images wirelessly without interrupting your shooting. No special computer skills are needed. The D5300 makes it simple to share great shots while they're still fresh.

## The app on your device: quick and easy

To prepare your smart device for connection, just download the Wireless Mobile Utility from the appropriate application store. It's fast, easy, and free.



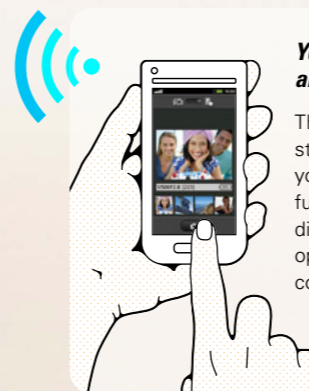
## Send images instantly to Facebook, Instagram and other SNS

Impress your friends – share D5300 images simply and quickly. The amazing quality of your images will attract immediate attention and “likes.”



## Your smart device as remote monitor and remote controller

The benefit of Wi-Fi® connection doesn't stop with viewing images: it can also help you capture them. The remote shooting function lets you release the shutter from a distance, while your smart device can operate like a remote live view monitor to confirm the image. It's perfect for taking group photos.



† Display above shows that for Android devices

## Built-in GPS Enrich your sharing experience

In addition to sharing D5300 images using Wi-Fi®, you can also tag them. With the built-in GPS, your travels are about to become even more interesting, now that you can save location information\*1 as Exif data on images, all without attachments or accessories. You can also create track logs\*2 with the location information – perfect for use when traveling. The log data can be used to display your travel route on ViewNX 2 and the map view on NIKON IMAGE SPACE, or other photo sharing websites.

\*1 Camera records latitude, longitude, altitude and UTC (Coordinated Universal Time). Compatibility varies by country.

\*2 This function can work even when the camera is turned off.



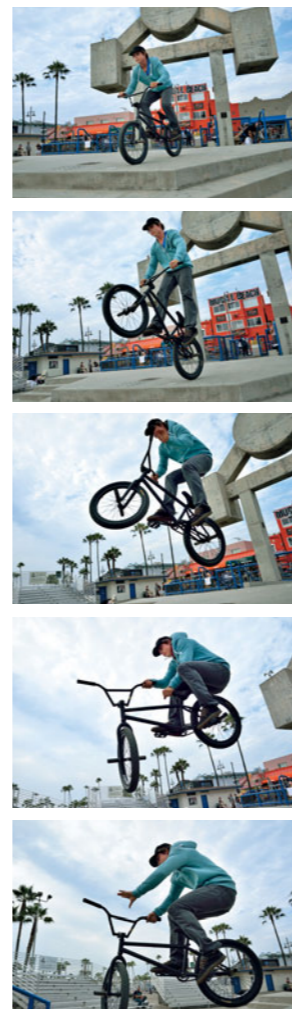
## NIKON IMAGE SPACE

With Nikon's image sharing and storage service, Nikon users qualify for storage space of up to 20 GB, free of charge. It also features one-click sharing to Facebook and Twitter. For details, check: [nikonimagespace.com](http://nikonimagespace.com)

# Boost the excitement by freezing the moment



• Lens: AF-S DX NIKKOR 16-85mm f/3.5-5.6G ED VR • Image quality: 12-bit RAW (NEF) • Exposure: [M] mode, 1/1600 second, f/5.6 • White balance: Auto • Sensitivity: ISO 400  
• Picture Control: Standard ©Kwaku Alston



## 39 Point AF Capture subjects with tack-sharp focus

Use the D5300's 39 focus points to quickly and sharply capture moments of peak action, even when your subject isn't in the center of the frame. The D5300 offers wide-area AF coverage and high-density focus points including 9 cross-type sensor in the center area, helping you master most focusing situations with a variety of autofocus options, such as Single-point AF, Dynamic-area AF, 3D-tracking, and Auto-area AF.



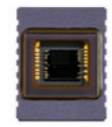
39-point AF system

## The benefit of shooting with a D-SLR's optical viewfinder

The most important reason for using a D-SLR is its optical viewfinder, which lets you see the subject in real time and without delay under any lighting condition. With your eye on the viewfinder, you will be able to support the camera firmly to eliminate camera shake. It also enables you to track fast-moving subjects.

## 2016 Pixel RGB sensor Camera intelligence for better pictures

When taking pictures, you can be sure that the D5300 will adapt to diverse shooting or lighting situations. Its incredibly accurate 2016-pixel RGB sensor collects brightness and color data that Nikon's exclusive Scene Recognition System analyzes meticulously. Everything in your shot is then used to calculate the precise available light exposure, flash exposure, autofocus and white balance – all measured before releasing the shutter.



## 5 fps Freeze the moment with 5 fps

Even when shooting sports scenes or other fast-moving subjects, the D5300 can easily and accurately capture the action. Its high-speed continuous shooting at approx. 5 fps\* delivers more opportunities to catch the right movement or expression. You can also select continuous low-speed release mode at approx. 3 fps\* for natural portrait shooting.

\*Based on CIPA Guidelines.



# Capture it from a dramatic point of view



Shooting from a high angle brings out smiles



Create unique pictures by shooting from a low angle

## Wide 8.1-cm/3.2-in. vari-angle LCD Monitor Unique angles make exceptional pictures

Sometimes the best angle for a picture may not be at eye level, but with most cameras or smart devices it is difficult to compose from a high or low perspective. For truly unique points of view, try the D5300's vari-angle LCD monitor. The wide 8.1-cm/3.2-in., approx. 1037k-dot super-sharp and bright LCD panel opens horizontally from 0° to 180° and can flip up and down from +180° to -90°. Now it's just as easy to shoot above a crowd as it is to compose close to ground level, while still viewing the full image displayed across the entire screen. The D5300 achieves even better contrast-AF performance during live view than previous models, constantly keeping your subject sharp through quicker, more accurate focusing movement\*.

\*Performance may vary depending on the lens used.



Turn the LCD monitor toward yourself for easy self-portraits



# Make any scene feel cinematic with high-quality video



**HDMI** The D5300 supports HDMI output so you can enjoy still images/movies on HDTV.  
Note: Type C mini-pin HDMI cable (available on the market) is required for playback.



The D5300 supports firm holding for easy handheld video shooting



HDR Painting



Toy Camera effect



Silhouette



Selective color



Miniature effect

# Push your creativity to the limit

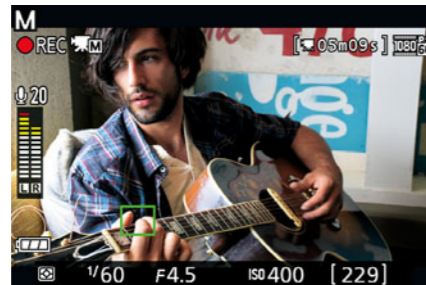
1080/60p  
Full HD  
D-Movie

## Capture life's movement easily

Leave the camcorder at home. The D5300 is also a high-performance video camera capable of Full HD D-Movies at 1920 x 1080 that are compatible with 60p/50p. That means you get smooth, fluid recording, even with fast-moving subjects. The CMOS image sensor with 24.2 effective megapixels and the EXPEED 4 image-processing engine work together to deliver sharp movie images with low noise in any light. An authentic D-SLR design makes it easy to grip the camera and position yourself securely during handheld shooting, while the new wide vari-angle LCD monitor provides a larger image for comfortable viewing. Steady handheld shooting, minimized camera shake and a wide array of sharp, dependable NIKKOR lenses give you the recipe for unique movies – even if you have limited or no experience. If you want to do more, the D5300's in-camera effects can give your movies a fun and creative look, while the easy-to-use in-camera editing features then help you to create clips, short films or any other creative works by combining your movies and still images.

## Seamless autofocus performance in video shooting

The D5300 boasts seamless autofocus performance for both live view shooting and video recording. The improved subject-tracking AF and full-time-servo AF (AF-F) keep your subjects in sharp focus as they move. Face-priority AF lets the D5300 capture fleeting expressions without user intervention. In combination with the extensive line-up of NIKKOR lenses, the D5300 delivers fast, accurate autofocus during video shooting.



## High-fidelity audio control and built-in stereo microphone

Audio quality makes a huge difference in the way a video is received. For on-the-go recording, the D5300 has a built-in stereo microphone that can be controlled automatically, or manually in 20 incremental steps. Audio levels can be easily confirmed visually on the LCD monitor both before and during video shooting for comfortable control.



## Best options for quieter movie shooting

### AF-S DX NIKKOR 18-140mm f/3.5-5.6G ED VR

An ideal lens for the D5300. Its quiet operational sound makes video recording more effective, while its powerful Vibration Reduction (VR) enables handheld movie recording without worrying about camera shake.



### Optional ME-1 Stereo Microphone

For enhanced audio quality, choose the optional ME-1 Stereo Microphone, which records high-fidelity stereo sound with minimal noise from the autofocus system.



Special Effects

## For unique images and videos

Get more creative and enhance your pictures and movies with nine easy-to-use Special Effects. Try the new HDR Painting or Toy Camera effect features to give your images a bold, artistic touch. You can even check how the effect looks in real time on the live view monitor before you shoot\*.

\*Movie recording and effect preview before the shot are not available with the HDR Painting mode.

**Special Effects:** Color sketch, Miniature effect, Selective color, Silhouette, Toy Camera effect, HDR Painting, High key, Low key and Night vision.

## Capture more detail in high-contrast light

HDR / Active D-Lighting

When shooting where the contrast between the brightest and darkest areas is extremely high, the D5300 offers two solutions: HDR (High Dynamic Range) and Active D-Lighting. HDR delivers a more dramatic effect and works best with landscapes and other stationary subjects\*, while Active D-Lighting is effective with general high-contrast subject matter, including people or moving subjects, maintaining natural tone even while achieving a strong effect. Both modes allow you to select the intensity level.

\*The camera's HDR mode takes two shots within a single shutter release. For optimum image sharpness, a tripod is recommended.



Active D-Lighting: ON



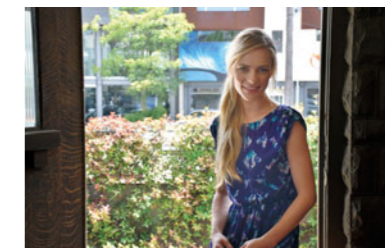
Active D-Lighting: OFF

Retouch Menu

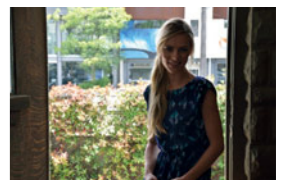
## Enjoy editing pictures after shooting

The D5300 is equipped with a number of in-camera editing functions that make image retouching easy. This includes a newly developed D-Lighting feature, "Portrait subjects", which enhances the exposure of human subjects\* while retaining the natural ambience of a low-lit background.

\*The camera automatically selects up to three subjects for portrait D-Lighting.



With D-Lighting (Portrait subjects)

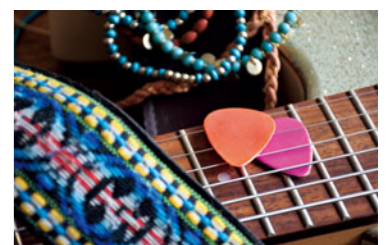


Without processing

Scene Modes

## Photo skills made simple

If your subject matter falls into a number of popular categories, select a Scene Mode from 16 available options. The D5300 can automatically choose the best camera settings, enabling you to get the results you've always wanted. Five frequently used Scene Modes, including Portrait and Landscape, can be directly selected using the mode dial. For other modes such as Sunset, Dusk/Dawn and Food, set the mode dial to SCENE and select the mode by rotating the command dial.



Close up mode

# Explore your ideas, take fun further

## Creative vision: NIKKOR lenses

One of the D5300's greatest advantages is NIKKOR lenses. With each lens you use, you'll see and capture the world in a completely new way. Wide-angle lenses let you capture landscapes and group shots. Telephoto lenses get closer to the action. Micro-NIKKOR lenses capture fine details at a high magnification, while zoom lenses offer incredible versatility when shooting. Made exclusively for Nikon D-SLR cameras, NIKKOR lenses are crafted with an uncompromising level of quality.



• Image quality: 14-bit RAW (NEF) • Exposure: [M] mode, 1/2000 second, f/1.8 • White balance: Auto • Sensitivity: ISO 100 • Picture Control: Standard ©Kwaku Alston



### AF-S DX NIKKOR 35mm f/1.8G

This light and compact lens is optimized for DX-format cameras, delivering both the superb sharpness and beautiful background blur you would expect from a prime lens. The fast aperture makes it particularly suited for portraits, and increases photo opportunities in low light.



• Image quality: 14-bit RAW (NEF) • Exposure: [M] mode, 1/20 second, f/3.2 • White balance: Auto • Sensitivity: ISO 200 • Picture Control: Standard ©Kwaku Alston

### AF-S DX Micro NIKKOR 40mm f/2.8G

This remarkably light, compact and agile micro lens serves as an exceptional complement to DX cameras. In addition to a dynamic life-size (1x) close-up capability, the 40 mm focal length can make a wide variety of subject matter approachable, including portraits and landscape. An excellent Micro NIKKOR for any DX photographer.



Focal length: 18 mm



Focal length: 300 mm  
• Image quality: 14-bit RAW (NEF) • Exposure: [A] mode, 1/500 second, f/8 • White balance: Auto • Sensitivity: ISO 400 • Picture Control: Standard ©Kwaku Alston

### AF-S DX NIKKOR 18-300mm f/3.5-5.6G ED VR

Ideal for almost any photo opportunity. This incredibly versatile lens has a dynamic zoom coverage of approx. 16.7x from wide-angle to super-telephoto. It also features Vibration Reduction (VR), which offers an effect equivalent to a shutter speed 3.5 stops\* faster. A highly convenient lens when traveling.



\*Based on CIPA Standard. This value is achieved when attached to a DX-format digital SLR camera, with zoom set at the maximum telephoto position.

# Added brilliance

## Extra light for better pictures

It's amazing what a little light can do. A flash can transform good pictures into great ones, and flash photography is easy with the D5300. Nikon's intelligent i-TTL flash control system automatically evaluates the ambient light and calculates the right amount of illumination you need for optimum results.



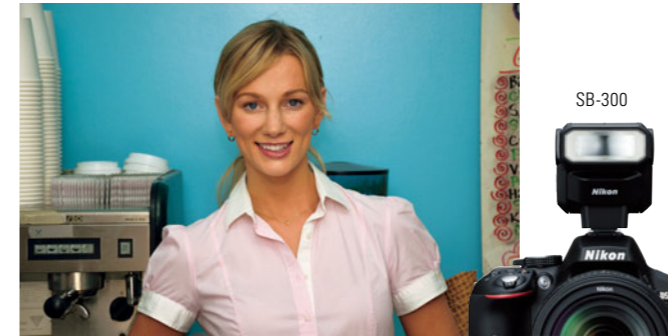
Built-in flash

### Built-in pop-up flash useful for both night and day

The D5300's built-in flash is not only useful at night or indoors, but can also soften annoying shadows from the faces of subjects who are backlit or wearing a hat. The camera adds the right light automatically, and when it is set to modes like Auto or Portrait, the flash pops up automatically when needed.



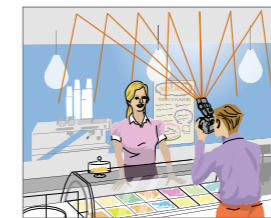
Without built-in flash



SB-300

### Optional Speedlight for more natural lighting

The professional-looking bounce flash technique becomes simple with the SB-300\*. Just tilt the flash head up, and the correct amount of light bounces off the ceiling to provide a soft, natural glow that might have otherwise been too direct or harsh.



\*The SB-300 does not support Advanced Wireless Lighting.

## WR-R10/WR-T10 Wireless Remote Controller



WR-R10 (Transceiver) WR-T10 (Transmitter)

Comfortable remote shooting is assured with WR-R10 and WR-T10 Wireless Remote Controller\*. Utilizing radio waves, these remote controllers enable remote shooting even if obstacles, such as trees, obscure the line of sight. You can control a single or multiple cameras with a WR-R10 attached (the number of cameras is not limited) by using the WR-T10 as a transmitter. Besides driving AF by half-pressing the shutter-release button of the controller and continuous shooting by pressing the shutter-release button longer, you can employ the controllers to operate various functions of the D5300 including movie recording.

\*The maximum reachable distance is approx. 20 m/66 ft. Approximate range at height of about 1.2 m/4 ft; varies with weather conditions and presence or absence of obstacles.

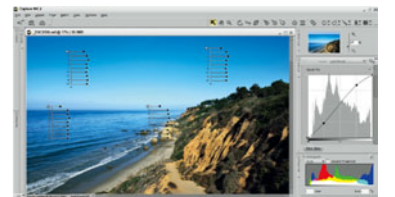


## Image browsing and editing software: ViewNX 2 (supplied)/Capture NX 2 (optional)

Supplied software ViewNX 2 lets you import, browse and edit your pictures and make your own original movies, as well as use image-editing functions such as resize and brightness adjustment. Capture NX 2 helps you take full advantage of your NEF data (Nikon's RAW data), which enables high-speed, stress-free editing even if the data size is large. In addition to RAW development, it incorporates various functions such as intuitive and simple editing using Color Control Points, Auto Retouch Brush and Batch Processing. You can focus on editing as it is possible to leave the original image intact. With both ViewNX 2 and Capture NX 2 software, your custom Picture Control settings can be used when developing RAW files.



ViewNX 2



Capture NX 2

# Let technology add some color to your lifestyle

Sleek design outside, advanced technology inside

## Compact and lightweight body

The D5300 is built for a life on the go. Its new internal design structure makes it much more compact and lighter than the D5200 while maintaining durability. The grip has also been improved so that you can hold the camera body more steadily for both viewfinder shooting and live view shooting, thus preventing camera shake and improving image sharpness. Choose from black, red or gray models to best match your style, and then start enjoying the feeling you get from owning this powerful image-making tool.



## Optical viewfinder for concentrated clarity

The D5300 features a newly designed pentamirror with improved approx. 0.82x magnification while maintaining approx. 95% frame coverage, giving you a clear and accurate view for comfortable shooting.

## "i" button for quick setting

To make the D5300 even easier to use, you can now directly access your most frequently used settings simply by pressing the new "i" button without going to the menu. You can either jump to the retouch menu or select the images you want to send to your smart devices, during playback.



## Wide monitor with full-screen display

Taking advantage of the D5300's wide 8.1-cm/3.2-in. LCD monitor, the aspect ratio has been changed from 4:3 to 3:2, enabling the whole area of images to be shown on the screen so that you can check the detail from edge to edge.



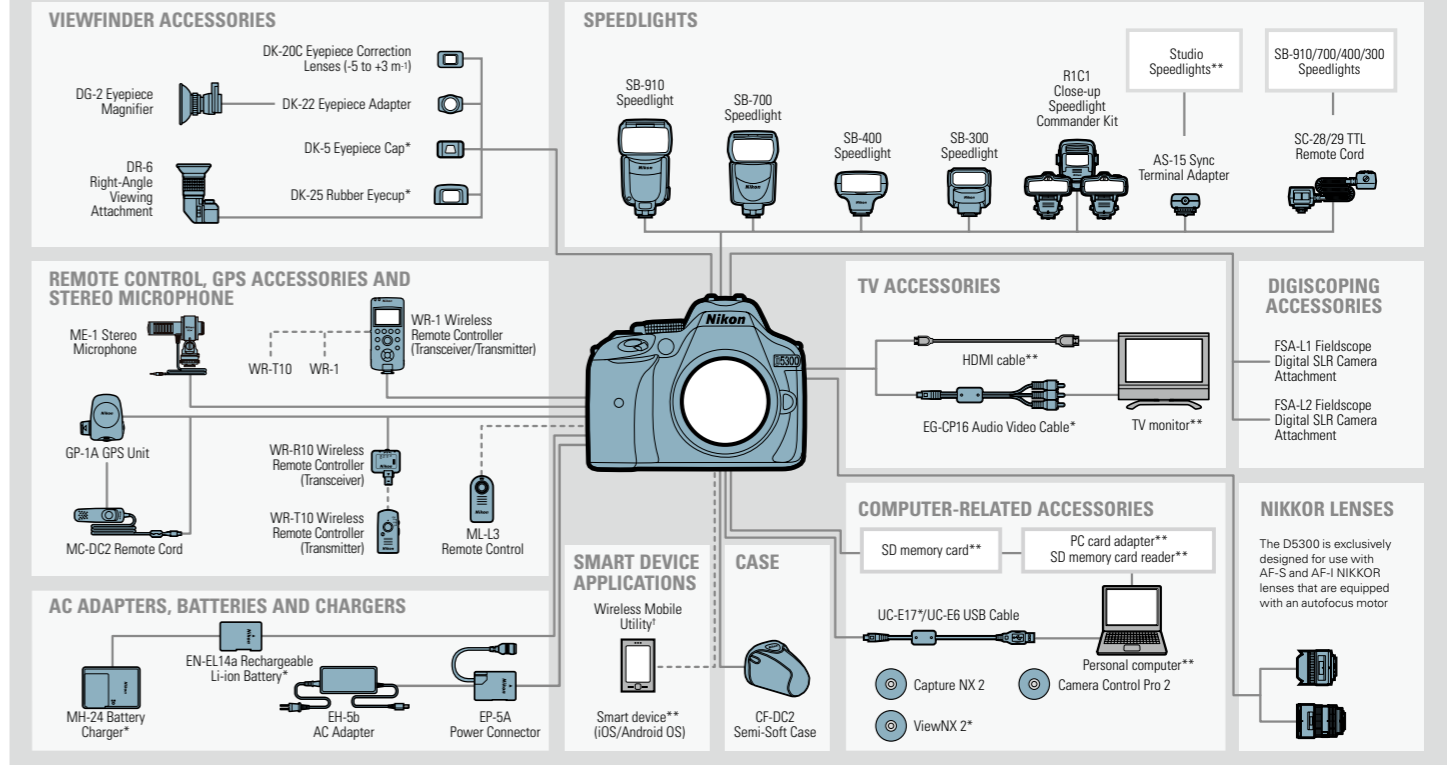
D5200

D5300

## Nomenclature



## System chart



† Can be downloaded from the application store of each smart device (free).

\*Supplied accessories \*\*Non-Nikon products

## Memory card capacity

The following table shows the approximate number of pictures that can be stored on a 16 GB SanDisk Extreme Pro SDHC UHS-I card at different image quality and size settings.

Image quality	Image size	File size <sup>1</sup>	No. of images <sup>1</sup>	Buffer capacity <sup>2</sup>
NEF (RAW), Compressed, 14-bit	—	23.8 MB	437	6
	—	19.0 MB	524	13
JPEG fine	Large	12.0 MB	1000	100
	Medium	7.4 MB	1700	100
	Small	3.8 MB	3300	100
JPEG normal	Large	6.3 MB	2000	100
	Medium	3.8 MB	3300	100
	Small	2.0 MB	6300	100
JPEG basic	Large	2.7 MB	3900	100
	Medium	1.9 MB	6500	100
	Small	1.0 MB	12100	100

## Approved memory cards

The following SD memory cards have been tested and approved for use in the D5300. Cards with class 6 or faster write speeds are recommended for movie recording. Recording may end unexpectedly when cards with slower write speeds are used.

	SD memory cards	SDHC memory cards <sup>4</sup>	SDXC memory cards <sup>5</sup>
SanDisk	2 GB <sup>3</sup>	4 GB, 8 GB, 16 GB, 32 GB	64 GB
Toshiba		4 GB, 8 GB, 16 GB, 32 GB	48 GB, 64 GB
Panasonic	2 GB <sup>3</sup>	4 GB, 8 GB, 16 GB, 32 GB	64 GB
		4 GB, 8 GB, 16 GB, 32 GB	64 GB, 128 GB
Lexar Media	—	4 GB, 8 GB, 16 GB	—
Platinum II	—	—	64 GB
Professional	—	—	64 GB, 128 GB
Full-HD Video	—	4 GB, 8 GB, 16 GB	—

1 All figures are approximate. Results will vary with card type, camera settings, and scene recorded.  
 2 Maximum number of exposures that can be stored in memory buffer at ISO 100. Drops when long exposure noise reduction, auto distortion control or print date is on.  
 3 Check that any card readers or other devices with which the card will be used support 2 GB cards.  
 4 Check that any card readers or other devices with which the card will be used are SDHC-compliant. The camera supports UHS-I.  
 5 Check that any card readers or other devices with which the card will be used are SDXC-compliant. The camera supports UHS-I.





# Nikon Digital SLR Camera D5300 Specifications

Type of camera	Single-lens reflex digital camera
Lens mount	Nikon F mount (with AF contacts)
Effective angle of view	Nikon DX format; focal length equivalent to approx. 1.5x that of lenses with FX-format angle of view
Effective pixels	24.2 million
Image sensor	23.5 × 15.6 mm CMOS sensor
Total pixels	24.78 million
Dust-reduction system	Image sensor cleaning, Image Dust Off reference data (optional Capture NX 2 software required)
Image size (pixels)	• 6000 × 4000 [L] • 4496 × 3000 [M] • 2992 × 2000 [S]
File format	• NEF (RAW): 12 or 14 bit, compressed • JPEG: JPEG-Baseline compliant with fine (approx. 1:4), normal (approx. 1:8), or basic (approx. 1:16) compression • NEF (RAW)+JPEG: Single photograph recorded in both NEF (RAW) and JPEG formats
Picture Control System	Standard, Neutral, Vivid, Monochrome, Portrait, Landscape; selected Picture Control can be modified; storage for custom Picture Controls
Storage media	SD (Secure Digital) and UHS-I compliant SDHC and SDXC memory cards
File system	DCF (Design Rule for Camera File System) 2.0, DPOF (Digital Print Order Format), Exif (Exchangeable Image File Format for Digital Still Cameras) 2.3, PictBridge
Viewfinder	Eye-level pentamirror single-lens reflex viewfinder
Frame coverage	Approx. 95% horizontal and 95% vertical
Magnification	Approx. 0.82x (50 mm f/1.4 lens at infinity, -1.0 m <sup>-1</sup> )
Eyeport	18 mm (-1.0 m <sup>-1</sup> ; from center surface of viewfinder eyepiece lens)
Diopter adjustment	-1.7 to +1.0 m <sup>-1</sup>
Focusing screen	Type B BriteView Clear Matte Mark VII screen
Reflex mirror	Quick return
Lens aperture	Instant return, electronically controlled
Compatible lenses	Autofocus is available with AF-S and AF-I lenses; autofocus is not available with other type G and D lenses, AF lenses (IX NIKKOR and lenses for the F3AF are not supported), and AI-P lenses; non-CPU lenses can be used in mode <b>M</b> , but the camera exposure meter will not function. The electronic rangefinder can be used with lenses that have a maximum aperture of f/5.6 or faster
Shutter type	Electronically controlled vertical-travel focal-plane shutter
Shutter speed	1/4000 to 30 s in steps of 1/3 or 1/2 EV; bulb; time
Flash sync speed	X=1/200 s; synchronizes with shutter at 1/200 s or slower
Release modes	[S] (single frame), [L] (continuous low speed), [H] (continuous high speed), [Q] (quiet shutter release), [t] (self-timer), [2s] (delayed remote; ML-L3), [q] (quick-response remote; ML-L3), interval timer photography supported
Frame advance rate	• [L] Up to 3 fps • [H] Up to 5 fps (JPEG and 12-bit NEF/RAW) or 4 fps (14-bit NEF/RAW) Note: Frame rates assume continuous-servo AF, manual or shutter priority auto exposure, a shutter speed of 1/250 s or faster, Release selected for Custom Setting a1 (AF-C priority selection), and other settings at default values
Self-timer	2 s, 5 s, 10 s, 20 s; 1 to 9 exposures
Exposure metering mode	TTL exposure metering using 2016-pixel RGB sensor
Metering method	• Matrix: 3D color matrix metering II (type G, E and D lenses); color matrix metering II (other CPU lenses) • Center-weighted: Weight of 75% given to 8-mm circle in center of frame • Spot: Meters 3.5-mm circle (about 2.5% of frame) centered on selected focus point
Metering range	• Matrix or center-weighted metering: 0 to 20 EV • Spot metering: 2 to 20 EV (ISO 100, f/1.4 lens, 20°C/68°F)
Exposure meter coupling	CPU
Exposure modes	Auto modes (auto; auto [flash off]); programmed auto with flexible program (P); shutter-priority auto (S); aperture-priority auto (A); manual (M); scene modes (portrait; landscape; child; sports; close up; night portrait; night landscape; party/indoor; beach/snow; sunset; dusk/dawn; pet portrait; candlelight; blossom; autumn colors; 11 food); special effects modes (night vision; color sketch; toy camera effect; miniature effect; selective color; silhouette; high key; low key; HDR painting)
Exposure compensation	Can be adjusted by -5 to +5 EV in increments of 1/3 or 1/2 EV in P, S, A and M modes
Exposure bracketing	3 shots in steps of 1/3 or 1/2 EV
Exposure lock	Luminosity locked at detected value with (O) button
ISO sensitivity	ISO 100 to 12800 in steps of 1/3 EV. Can also be set to approx. 0.3, 0.7, or 1 EV (Recommended Exposure Index) above ISO 12800; auto ISO sensitivity control available
Active D-Lighting	Auto, extra high, high, normal, low, off
ADL bracketing	2 shots
Autofocus	Nikon Multi-CAM 4800DX autofocus sensor module with TTL phase detection, 39 focus points (including 9 cross-type sensor), and AF-assist illuminator (range approx. 0.5 to 3 m/1 ft 8 in. to 9 ft 10 in.)
Detection range	-1 to +19 EV (ISO 100, 20°C/68°F)
Lens servo	• Autofocus (AF): Single-servo AF (AF-S); continuous-servo AF (AF-C); auto AF-S/AF-C selection (AF-A); predictive focus tracking activated automatically according to subject status • Manual focus (MF): Electronic rangefinder can be used
Focus point	Can be selected from 39 or 11 focus points
AF-area modes	Single-point AF, 9-, 21- or 39-point dynamic-area AF, 3D-tracking, auto-area AF
Focus lock	Focus can be locked by pressing shutter-release button halfway (single-servo AF) or by pressing (O) button
Built-in flash	[A], [B], [C], [D], [E], [F], [G], [H]: Auto flash with auto pop-up P, S, A, M, t: Manual pop-up with button release
Guide number	Approx. 12/39, 13/43 with manual flash (m/ft, ISO 100, 20°C/68°F)
Flash control	TTL: i-TTL flash control using 2016-pixel RGB sensor is available with built-in flash and SB-910, SB-900, SB-800, SB-700, SB-600, SB-400, or SB-300; i-TTL balanced fill-flash for digital SLR is used with matrix and center-weighted metering, standard i-TTL flash for digital SLR with spot metering
Flash modes	Auto, auto with red-eye reduction, auto slow sync, auto slow sync with red-eye reduction, fill-flash, red-eye reduction, slow sync, slow sync with red-eye reduction, rear-curtain with slow sync, rear-curtain sync, off

Flash compensation	-3 to +1 EV in increments of 1/3 or 1/2 EV
Flash-ready indicator	Lights when built-in flash or optional flash unit is fully charged; flashes after flash is fired at full output
Accessory shoe	ISO 518 hot-shoe with sync and data contacts and safety lock
Nikon Creative Lighting System (CLS)	Advanced Wireless Lighting supported with SB-910, SB-900, SB-800 or SB-700 as a master flash or SU-800 as commander; Flash Color Information Communication supported with all CLS-compatible flash units
Sync terminal	AS-15 Sync Terminal Adapter (available separately)
White balance	Auto, incandescent, fluorescent (7 types), direct sunlight, flash, cloudy, shade, preset manual, all except preset manual with fine-tuning
White balance bracketing	3 shots in steps of 1
Live view lens servo	• Autofocus (AF): Single-servo AF (AF-S); full-time-servo AF (AF-F) • Manual focus (MF)
AF-area modes	Face-priority AF, wide-area AF, normal-area AF, subject-tracking AF
Autofocus	Contrast-detect AF anywhere in frame (camera selects focus point automatically when face-priority AF or subject-tracking AF is selected)
Automatic scene selection	Available in [A] and [Q] modes
Retouch menu	D-Lighting, Red-eye correction, Trim, Monochrome, Filter effects, Color balance, Image overlay, NEF(RAW) processing, Resize, Quick retouch, Straighten, Distortion control, Fisheye, Color outline, Color sketch, Perspective control, Miniature effect, Selective color, Edit movie, Side-by-side comparison
Movie metering	TTL exposure metering using main image sensor
Metering method	Matrix
Frame size (pixels) and frame rate	• 1920 × 1080; 60p (progressive)/50p/30p/25p/24p, ★ high/normal • 1280 × 720; 60p/50p, ★ high/normal • 640 × 424; 30p/25p, ★ high/normal Frame rates of 30p (actual frame rate 29.97 fps) and 60p (actual frame rate 59.94 fps) are available when NTSC is selected for video mode; 25p and 50p are available when PAL is selected for video mode; actual frame rate when 24p is selected is 23.976 fps
File format	MOV
Video compression	H.264/MPEG-4 Advanced Video Coding
Audio recording format	Linear PCM
Audio recording device	Built-in or external stereo microphone; sensitivity adjustable
Maximum length	29 min. 59 s (20 min. in 1920 × 1080; 60p/50p, 3 min. in miniature mode)
ISO sensitivity	ISO 100 to 12800; can also be set to approx. 0.3, 0.7, or 1 EV (ISO 25600 equivalent) above ISO 12800
Monitor	8.1-cm/3.2-in. (3:2), approx. 1037k-dot (720 × 480 × 3 = 1,036,800 dots), vari-angle TFT monitor with 170° viewing angle, approx. 100% frame coverage, and brightness adjustment
Playback	Full-frame and thumbnail (4, 12, or 80 images or calendar) playback with playback zoom, movie playback, photo and/or movie slide shows, histogram display, highlights, auto image rotation picture rating, and image comment (up to 36 characters)
USB	Hi-Speed USB
Video output	NTSC, PAL
HDMI output	Type C mini-pin HDMI connector
Accessory terminal	• Wireless remote controllers: WR-1, WR-R10 (available separately) • Remote cord: MC-DC2 (available separately) • GPS units: GP-1/GP-1A (available separately)
Audio input	Stereo mini-pin jack (3.5-mm diameter); supports optional ME-1 Stereo Microphone
Wireless standards	IEEE 802.11b, IEEE 802.11g
Communications protocols	• IEEE 802.11b: DSSS/CCK • IEEE 802.11g: OFDM
Operating frequency	2412 to 2462 MHz (channels 1 to 11)
Range (line of sight)	Approximately 30 m/98 ft (assumes no interference; range may vary with signal strength and presence or absence of obstacles)
Data rate	54 Mbps; maximum logical data rates according to IEEE standard; Actual rates may differ
Security	• Authentication: Open system, WPA2-PSK • Encryption: AES
Wireless setup	Supports WPS
Access protocols	Infrastructure
Location data receiving frequency	1575.42 MHz (C/A code)
Geodesics	WGS84
Supported languages	Arabic, Bengali, Chinese (Simplified and Traditional), Czech, Danish, Dutch, English, Finnish, French, German, Greek, Hindi, Hungarian, Indonesian, Italian, Japanese, Korean, Norwegian, Persian, Polish, Portuguese (Portugal and Brazil), Romanian, Russian, Spanish, Swedish, Tamil, Thai, Turkish, Ukrainian, Vietnamese
Battery	One EN-EL14a Rechargeable Li-ion Battery
AC adapter	EH-5b AC Adapter; requires EP-5A Power Connector (available separately)
Tripod socket	1/4 in. (ISO 1222)
Dimensions (W × H × D)	Approx. 125 × 98 × 76 mm/49.2 × 3.9 × 3 in.
Weight	Approx. 530 g/1 lb 2.7 oz with battery and memory card but without body cap; approx. 480 g/1 lb 0.9 oz (camera body only)
Operating environment	Temperature: 0 to 40°C/32 to 104°F; humidity: 85% or less (no condensation)
Supplied accessories	EN-EL14a Rechargeable Li-ion Battery, MH-24 Battery Charger, DK-5 Eyepiece Cap, DK-25 Rubber Eyecup, UC-E17 USB Cable, EG-CP16 Audio Video Cable, AN-DC3 Camera Strap, BF-1B Body Cap, BS-1 Accessory Shoe Cover, ViewNX 2 CD-ROM

• The SD, SDHC and SDXC logos are trademarks of the SD-3D, LLC. • PictBridge is a trademark. • HDMI, the HDMI logo and High-Definition Multimedia Interface are trademarks or registered trademarks of HDMI Licensing, LLC. • Google and Android™ are registered trademarks or trademarks of Google Inc. • Wi-Fi is a registered trademark of Wi-Fi Alliance®. • Products and brand names are trademarks or registered trademarks of their respective companies. • Images in viewfinders, on LCDs and monitors shown in this brochure are simulated.

Specifications and equipment are subject to change without any notice or obligation on the part of the manufacturer. October 2013 © 2013 Nikon Corporation

**WARNING** **TO ENSURE CORRECT USAGE, READ MANUALS CAREFULLY BEFORE USING YOUR EQUIPMENT. SOME DOCUMENTATION IS SUPPLIED ON CD-ROM ONLY.**

Visit the Nikon Europe website at: [www.europe-nikon.com](http://www.europe-nikon.com)



Nikon Europe B.V. Tripolis 100, Burgerweeshuispad 101, 1076 ER Amsterdam, The Netherlands  
 Nikon U.K. Ltd. Nikon House, 380 Richmond Road, Kingston upon Thames, Surrey KT2 5PR, U.K. [www.nikon.co.uk](http://www.nikon.co.uk)  
 NIKON CORPORATION Shin-Yurakucho Bldg., 12-1, Yurakucho 1-chome, Chiyoda-ku, Tokyo 100-8331, Japan [www.nikon.com](http://www.nikon.com)