

VPL-VW320ES VPL-VW550ES Experience Home Cinema with true 4K HDR

True 4K Home
Cinema – more
than 4x the quality
of Full HD



- 4K resolution: 4096 x 2160
- 1,800 ANSI lumens (VPL-VW550ES)
- 1,500 ANSI lumens (VPL-VW320ES)
- Long lasting 6,000 hour lamp life
- Compact and functional design, in black or white

At a glance



Key Features

Shaped by our professional cinema expertise

With decades of experience developing technology for the big screen, we've packed major innovations into the VPL-VW320ES & VPL-VW550ES:

Advanced native 4K

Ultra-smooth, native 4K, dramatically reducing the space between pixels.

True 4K HDR

High Dynamic Range takes you closer still to reality with higher contrast, richer colours and a wider range of brightness levels from deep, dark blacks to bright, sparkling highlights.

Reality Creation

Enjoy your existing Full HD Blu-ray™ collection, upscaled for an exceptional 4K experience – even in 3D.

Easy to control

Compatible with Crestron Connected and Control 4 SDDP for easy control and enhanced home automation capability.

Bring incredible 4K detail to your favourite movies

Imagine bringing the truly cinematic quality of 4K to your own home. Now you can make it a reality with our VPL-VW320ES & VPL-VW550ES Home Cinema projectors. Producing a native 4096 x 2160 resolution picture – there's over four times the quality of Full HD.

Designed to fit perfectly into your living room, the VPL-VW320ES & VPL-VW550ES deliver stunning, detail-packed images and incredibly lifelike colour, like never before. And with 1,800 ANSI lumens brightness (VPL-VW550ES) and 1,500 ANSI lumens brightness (VPL-VW320ES) respectively, you're guaranteed an exceptional picture, even in well-lit rooms.

Get more from your 2D and 3D discs

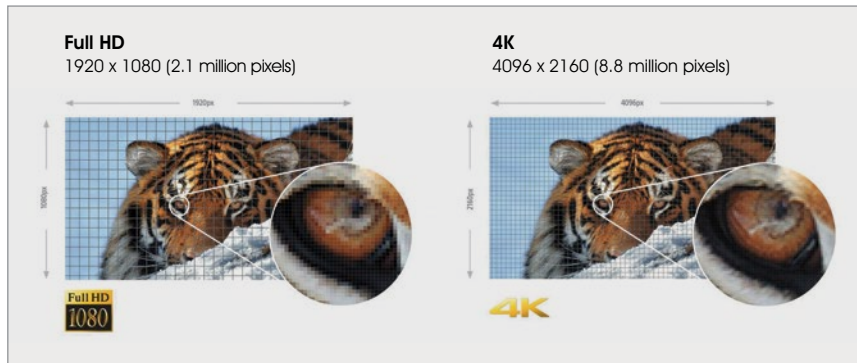
While more and more native 4K material is becoming available, the VPL-VW320ES & VPL-VW550ES use our Reality Creation technology to upscale Full HD content for an incredible 4K experience. It means you'll get the very best from your current Blu-ray Disc™ library, with fuller colour, greater clarity and more impact than ever before.

Compact and user-friendly

The VPL-VW320ES & VPL-VW550ES are easy to operate, with a variety of control modes so you get the very best picture, whatever you're watching. With the same chassis as our previous leading 4K models, the compact design of the VPL-VW320ES & VPL-VW550ES offer great flexibility for installation.

4K native resolution: over 4x better than Full HD

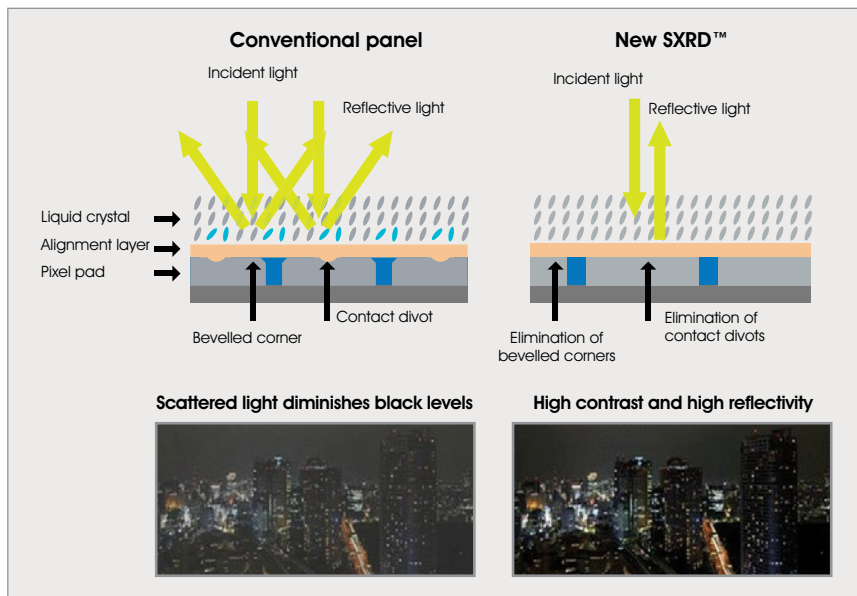
No compromises: 4096 x 2160 4K resolution (the DCI standard in digital cinemas). We've used our professional cinema expertise to develop 4K SXRD panels that produce a 4K native picture with no artificial enhancement of pixels. ▼



Simulated images

Contrast enhancer and SXRD panels

The VPL-VW320ES & VPL-VW550ES automatically adjust contrast for optimum picture quality by analysing dark and light areas in every scene. Advanced SXRD panels include a highly reflective liquid crystal layer and an alignment layer without bevelled corners or contact divots for an ultra-fast response rate of 2.5-milliseconds. Space is minimised between pixels to give dot-free pictures with deep contrast. Optical engine improvements and advanced Iris 3 technology mean the VPL-VW550ES achieves an incredible dynamic contrast ratio of 350,000:1. Blacks and whites are maximised without diminishing brightness so you won't miss a detail, even in dark scenes. ▼



Simulated images

Motionflow for smoother content

Our enhanced Motionflow technology: 'Combination' mode uses our 'Film Projection' and 'Motion Enhancer', adding frames to reduce blur and maintain brightness in thrilling, fast-moving scenes. Cinema purists can choose 'True Cinema' to retain the original 24 frames per second (VPL-VW320ES only). ▼



Simulated images

Compatible with High Dynamic Range (HDR)

The VPL-VW550ES supports HDR through various Electro-Optical Functions (EOF), such as Hybrid Log-Gamma (HyLG), covering applications for both cinematography and broadcast. HyLG was developed by the BBC and NHK for live on-the-fly and pre-recorded 4K UHD content with HDR for over-the-air broadcast.

Low latency mode

A great feature for gamers. Experience our fastest ever response time between your controller and the screen for ultimate gaming action.



The latest 4K/60p HDMI standard: 60 frames per second

The VPL-VW320ES & VPL-VW550ES can show up to 60 frames per second in 4K (at colour signal YCbCr 4:2:0 / 8 bit), the new 4K industry standard and much higher than the earlier 24p. The result is a smoother image with superior colour and realism. Plus, they're HDCP 2.2 compatible, ready for future premium 4K content releases.

Front-facing fan

Because the fan is positioned at the front, you don't need to worry about wall space and room for air intake/exhaust when you install. This helps maximise the throw distance for bigger projected images. ▼



Industry standard RF 3D compatible

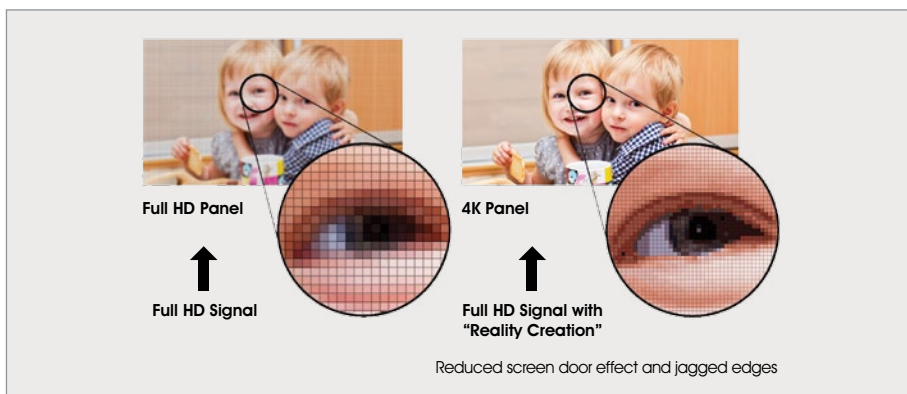
A built-in RF transmitter synchronises with any RF 3D glasses for wider coverage, greater stability, and there's no need for an external transmitter. ▶



Sony RF 3D Glasses

Reality Creation: upscales your movies to 4K

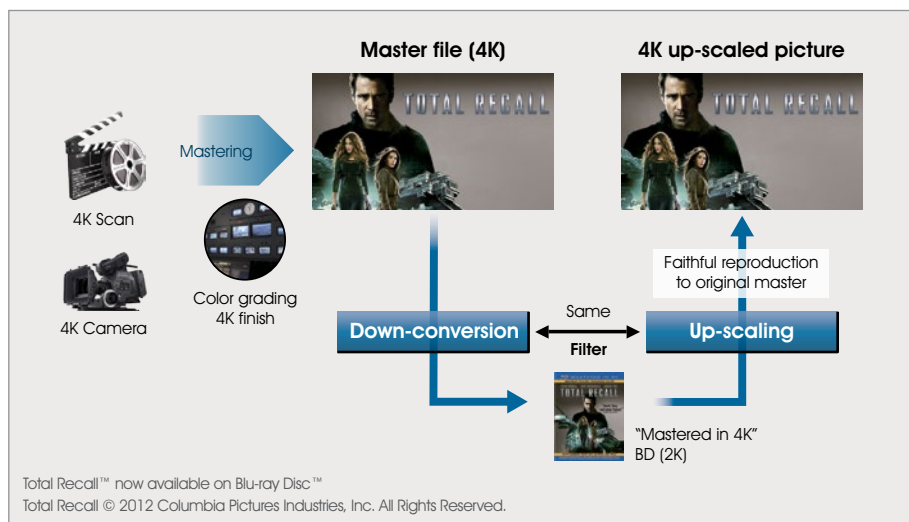
As well as native 4K material, you can see your current Full HD Blu-ray™ or DVD movie collection upscaled for a 4K experience. Reality Creation is a technology that radically enhances Full HD content, even upscaling 3D movies for 4K. ▼



Simulated images

Compatible with 'Mastered in 4K' Blu-ray™ discs

Drawing on the same technology used to downscale 4K material for Full HD, the VPL-VW320ES & VPL-VW550ES give you a near native 4K experience with discs 'Mastered in 4K'. It's as close as you can get to the 4K-pixel resolution and expanded colour range of the original. ▼



Total Recall™ now available on Blu-ray Disc™
Total Recall © 2012 Columbia Pictures Industries, Inc. All Rights Reserved.

Simulated images

Wider zoom and shift lens

A 2.06 motorised zoom lens and wide lens shift range of up to 85% vertical and 31% horizontal gives greater installation flexibility – even when the ceiling is very high.

Suitable for home automation

The VPL-VW320ES & VPL-VW550ES are compatible with many home automation systems, including Crestron Connected and Control4 SDDP. They have an RS232 interface, RJ45 control and IR-IN terminal.



Manual HSV Colour Correction

A correction tool allows you to adjust the gamma and hue, saturation and brightness of each colour to get exactly the picture you want.

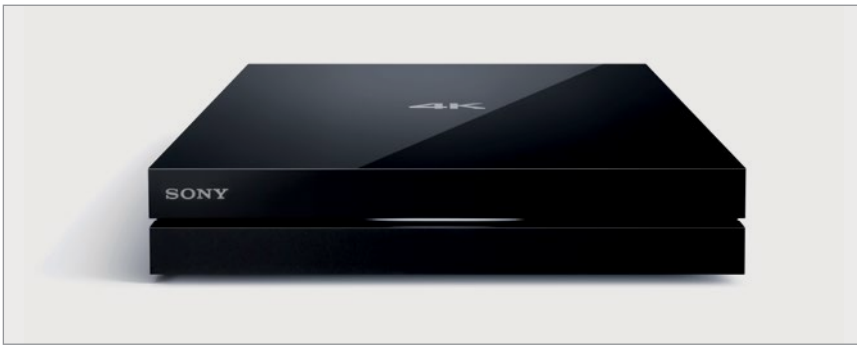
TRILUMINOS™ Display

The VPL-VW320ES & VPL-VW550ES optical engines and SXRD panels incorporate our TRILUMINOS™ Display technology to produce a much broader colour range, reproducing more tones and textures than a standard projector system. The result is greater purity, depth and realism. ▼



HDCP 2.2 compatible

The VPL-VW320ES & VPL-VW550ES are ready for future premium 4K content, including TV, internet streamed productions and satellite broadcasts. ▼



Sony FMP-X5 Media Player

Wireless option (up to Full HD 60p)

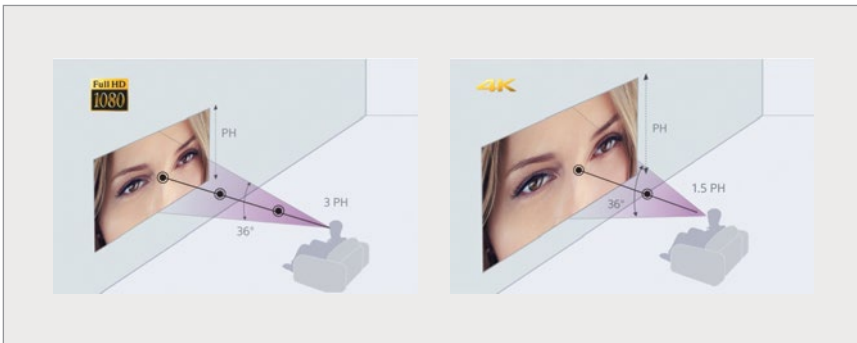
Free yourself from cables and keep things tidy with an optional wireless HDMI emitter/receiver kit. The VPL-VW320ES & VPL-VW550ES can wirelessly connect to your games console, Blu-ray™ Disc player and more, and upscales for a 4K experience with Reality Creation.

USB updates

To get the best from your projector, the VPL-VW320ES & VPL-VW550ES have USB ports to automatically receive the latest firmware updates, directly to the projectors.

Sit closer

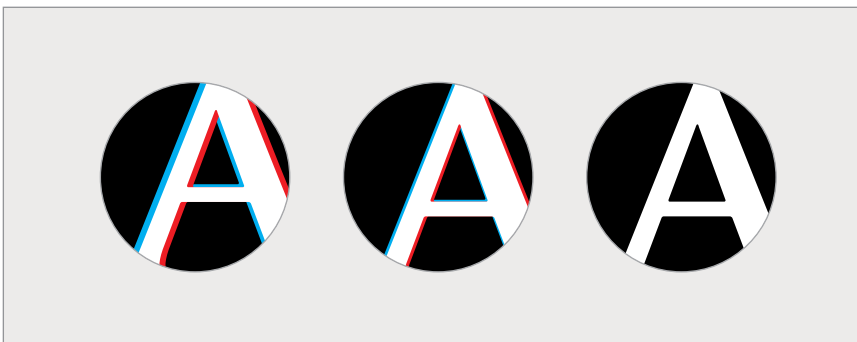
With 4K resolution, you can sit closer to the screen without compromising depth and realism. The best viewing position for 4K is at a distance of approximately 1.5 times the height of the projector screen (PH), compared to 3 times the height of the screen for Full HD. ▼



Simulated images

Electronic panel alignment

Ensures the red and blue elements in each pixel are precisely positioned against green. Adjustments can be made by as little as 0.1 pixels for optimum clarity. (NB we recommend adjustments are made when the projector is warm). ▼



Simulated images

PrimeSupportPro

The VPL-VW320ES & VPL-VW550ES come with our 3-year PrimeSupportPro package. There are no unexpected costs if you experience a problem, just fast, efficient technical support from our free multi-lingual helpline advisors. This package also includes 1-year or 1,000 hours lamp cover.

PrimeSupport Pro



Specifications

| | | VPL-VW320ES | VPL-VW550ES |
|---|------------------------|---|---|
| Display system | | High Frame Rate SXRD panel | |
| Light Output | | 1,500 lm | 1,800 lm |
| Dynamic contrast | | - | 350,000 : 1 |
| Display elements | Effective display size | 0.74" x 3 | |
| | Effective pixels | 4K (4096 x 2160) x3 / 26,542,080 pixels | |
| Projection lens | Zoom / Focus | Electric (Approx. 2.1 x) / Electric | |
| | Throw ratio | 1.38-2.83:1 | |
| | Lens shift | Electric, V +85% / -80% H: +/-31% | |
| Light source | | Ultra High-pressure lamp 225W type | Ultra High-pressure lamp 280W type |
| Screen size | | 60" to 300" | |
| Reality Creation | | YES (4K Reality Creation) | |
| Compatible with Hybrid Log Gamma | | - | YES |
| High Dynamic Range (HDR) | | YES | YES |
| Compatible with "Mastered in 4K " Blu-ray | | YES | |
| 4K 60p | | YES (YCbCr 4:2:0 8 bit) | YES (YCbCr 4:2:0 10 bit) |
| TRILUMINOS™ | | YES | |
| Advanced iris | | - | YES (ver. 3) |
| 3D capability | | YES | |
| 3D emitter | | Built-in RF emitter | |
| 3D glasses | | TDG-BT500A (Optional) | |
| Manual Calibration | | HSV Colour Correction | |
| HDCP 2.2 Compliance | | YES ¹ | |
| Wireless HDMI compatibility | | IFU-WH1 (Optional) | |
| Low latency mode | | YES | |
| Picture modes | | 9 modes | |
| Picture position | | - | YES |
| Gamma modes | | 11 modes | |
| Panel Alignment | | Yes (Shift / Zone) | |
| Input/Output | HDMI (2 inputs) | Digital RGB/Y Pb/Cb Pr/Cr | |
| | Remote | RS-232C | |
| | LAN | RJ45, 10BASE-T/100BASE-TX | |
| | IR IN | Mini Jack | |
| | TRIGGER | Minijack, DC 12V Max. 100m A | |
| | USB | DC 5V. MAX. 500mA | |
| Acoustic noise | | 26dB | |
| Power requirement | | AC 100 V to 240 V, 3.5A to 1.5A, 50/60 Hz | AC 100 V to 240 V, 4.1A to 1.7A, 50/60 Hz |
| Power consumption | | 330W | 390W |
| Lamp life ^{*2} | | 6,000h | |
| Body Colour | | Black / Premium White | |
| Standard outside dimensions | | W 496 mm H 202mm D 464mm | |
| Weight | | Approx. 14 kg | |
| Supplied Accessories | | Remote Control RM-PJ28 | Remote Control RM-PJ24 |
| | | Size AA (R6) manganese batteries (2) | |
| | | AC Power Cord for projector (1) | |
| | | Quick reference manual (1) | |
| | | Operating Instructions (CD-ROM) (1) | |

¹ For the VPL-VW320ES HDMI Input 2 is compatible with HDCP2.2.

² The figures are expected maintenance time and not guaranteed. They will depend on the environment or how the projector is used.

Optional Accessories

Projector lamp for VPL-VW320ES
(LMP-H220)



Projector lamp for VPL-VW550ES
(LMP-H280)



3D Glasses
(TDG-BT500A)



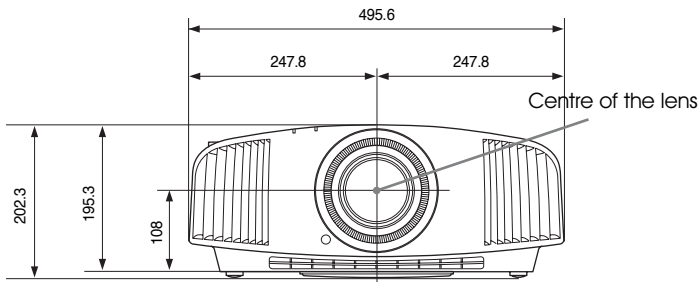
Ceiling Mount
(PSS-H10)



Dimensions

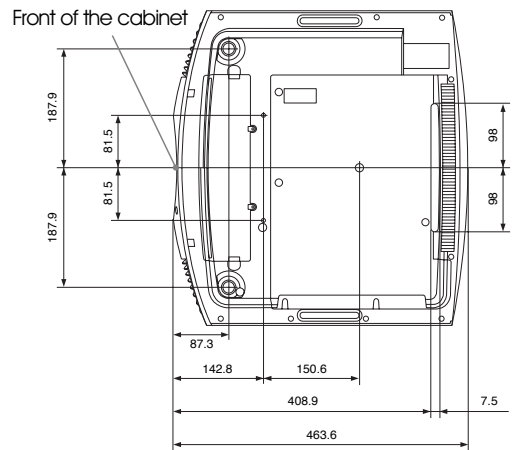
Front

Unit: mm



Bottom

Unit: mm



For further details of how to get a fully immersive 4K cinematic experience for your home visit:
www.pro.sony.eu/homecinemaprojectors

© 2016 Sony Corporation. All rights reserved. Reproduction in whole or in part without permission is prohibited. Features and specifications are subject to change without notice. All non-metric weights and measurements are approximate. 'Sony' and 'BrightEco' are registered trademarks or trademarks of Sony Corporation. All other trademarks are the property of their respective owners.

Distributed by

Sony is the leading supplier of AV/IT solutions to businesses across a wide variety of sectors including, **Media and Broadcast, Video Security, Medical, Digital Cinema and Displays**. It delivers products, systems and applications to enable the creation, manipulation and distribution of digital audio-visual content that add value to businesses and their customers. With over 25 years' experience in delivering innovative market-leading products, Sony is ideally placed to deliver exceptional quality and value to its customers. Collaborating with a network of established technology partners, Sony delivers end-to-end solutions that address the customer's needs, integrating software and systems to achieve each organisation's individual business goals. For more information please visit www.pro.sony.eu

Follow us on Twitter at [@SonyProEurope](https://twitter.com/SonyProEurope) / www.twitter.com/sonyproeurope

SONY