

Lenovo® recommends Windows 8.



THINKSTATION® P300 WORKSTATION

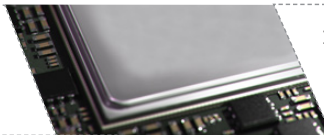
**POWER OF A WORKSTATION.
PRICE OF A DESKTOP.**



Mission-critical tasks require superior reliability and powerful performance. ThinkStation® P300 leads on both counts and does it with exceptional all-around value. Consider the latest high-performance Intel® Xeon® processors; NVIDIA® Quadro® professional graphics; and innovative Flex module support for easy customization, all surprisingly affordable.

WHY BUY THE P300 WORKSTATION?

1 RELIABLE PERFORMER



Intel® Xeon® processors and NVIDIA® Quadro® graphics deliver powerful performance. ISV certifications and error checking and correcting memory ensure exceptional reliability.

2 INNOVATIVE FEATURES



The FLEX module allows for unprecedented flexibility in customizing I/O ports.

3 EXCEPTIONAL VALUE



Truly affordable for any organization requiring a comfortable combination of performance and value.

WHO NEEDS THE P300 WORKSTATION?

1 Companies ready to upgrade from PCs to more powerful workstations without breaking the budget.

2 Any organization requiring reliable performance – manufacturing, design, architecture, finance, medical imaging, software development etc.

3 Users in mission-critical environments seeking high-performance yet affordable workstations.



Lenovo® recommends Windows 8.



SPECIFICATIONS

PERFORMANCE

Processor
 Tower / SFF
 Intel® Core™ i7 processor
 Intel® Core™ i5 processor
 Intel® Core™ i3 processor
 Intel® Xeon® E3-1200 processor

Operating System
 Windows 8.1 64 bit
 Windows 8.1 Pro 64 bit
 Windows 7 Professional 64 bit
 Windows 7 Professional 32 bit

Power supply
 Tower: 280W 85% SFF: 240W 85%
 450W 92% 240W 92%

Graphics
 SFF : NVIDIA® NVS / Quadro® up to K600
 Tower: NVIDIA® NVS / Quadro® up to K4000

Memory
 4 Slots, 32GB

Max HDD
 SFF: 3 HDD
 2 x 3.5"
 1 x 2.5"
 Tower: 4 HDD
 4 x 3.5" or
 4 x 2.5"

mSATA
 24GB

RAID
 0, 1, 5, 10¹

Media Card Reader
 SD Card Reader Standard
 Optional 29:1

Flex Module
 YES – up to 4 devices
 (1) 9.5 mm Slim ODD
 (1) MCR
 1394 IEEE Firewire
 eSATA

¹ Tower Only

DESIGN

Chip set
 C226

Storage
 3.5" SATA 7200 RPM up to 4TB
 3.5" SATA 7200 RPM Hybrid up to 2TB
 2.5" SATA 10K RPM up to 1TB
 2.5" SATA SSD up to 512GB
 mSATA 24GB

Ports
Front
 (2) USB 3.0
 (1) Microphone
 (1) Headphone
 (1) SD Card Reader
 (1) 29:1 MCR (Optional)
 (1) 1394 IEEE Firewire (Optional)
 (1) eSATA (Optional)

Rear
 (4) USB 3.0
 (2) USB 2.0
 (1) Serial (+1 Optional)
 (1) VGA
 (2) Display Port
 (1) Ethernet
 (1) Audio Line In
 (1) Audio Line Out
 (1) Microphone In

Physical Security
 Cable Lock

Wi-Fi
 Optional Intel® Wireless – N 7260
 802.11 b/g/n, 2 x 2, 2.4 GHz WiFi + Bluetooth® 4.0

PCI / PCIe Slots
 1 x PCIe x16
 1 x PCI x4 (x16 Mechanical)
 1 x PCIe x1
 1 x PCI

Dimensions (W x D x H)
 SFF : 4.0" x 14.8" x 13.3"
 (101.6 mm x 375.92 mm x 337.82 mm)
 Tower: 6.9" x 16.97" x 16.7"
 (175.26 mm x 429.26 mm x 424.18 mm)

SOFTWARE

WINDOWS 7 PRELOADS
 Adobe® Acrobat Reader
 CyberLink Power DVD (on systems with Optical drives)
 CyberLink Create (on systems with Optical drives)
 Microsoft® Office 2013 Trial
 Norton® Internet Security 2014 (30-day trial)
 Skype™
 ThinkVantage® System Update
 Rescue and Recovery® (Ready-to-Install)
 Lenovo® Reach (only in US and Canada)
 Lenovo® Solution Center
 PC Device Experience

WINDOWS 8.1 PRELOADS
 CyberLink Power DVD (on systems with Optical drives)
 CyberLink Create (on systems with Optical drives)
 Evernote®
 Lenovo® Companion
 Lenovo® Support
 Lenovo® Solution Center
 Norton® Internet Security 2014 (30-day trial)
 Password Manager (Web install)
 PC Device Experience
 Hightail
 Lenovo® Reach (only in US and Canada)
 Norton® Studio

ACCESSORIES



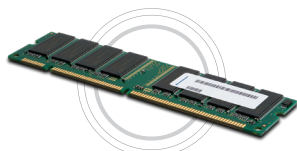
Monitor

Lenovo® ThinkVision® LT3053p 30" LED Monitor (60A4RAR1xx)
 Lenovo® ThinkVision® LT2452p 24" LED Monitor (60A6MAR2xx)
 Lenovo® ThinkVision® LT2252p 22" LED Monitor (R72MCxx / T72MDxx)



Storage

500GB SATA HDD – 43R1990
 1TB SATA HDD – 45J7918
 2TB SATA HDD – 4XB0F18667



Memory

4GB NON-ECC UDIMM – 0A65729
 8GB NON-ECC UDIMM – 0A65730

LENOVO SERVICES

Lenovo offers a comprehensive portfolio of services that support the full lifecycle of your ThinkStation investment.

PRIORITY TECHNICAL SUPPORT*
 Makes your priority, our priority. 24x7 priority call routing to advanced-level technicians, electronic incident tracking, and rapid response and resolution.
 * Not available in all regions

WARRANTY EXTENSIONS
 This fixed-term, fixed-cost service helps accurately budget for PC expenses, protect your valuable investment and potentially lower the cost of ownership over time.

ONSITE NEXT BUSINESS DAY + TECHNICIAN INSTALLATION OF CUSTOMER REPLACEABLE UNIT PARTS
 Frees your IT staff from installing all internal parts so that they have more time to deal with mission critical business.

KEEP YOUR DRIVE
 Retain your drive if it should happen to fail, giving you the peace of mind to know that your valuable data is secure. KYD applies to all drives within multi hard disk/SSD systems.

WHY THINKSTATION® ?

- 1 The most reliable workstation*** – Engineered to channel maximum airflow over key components.
- 2 Blazing speeds and scalability** – High-performance components and features to run workstation class applications.
- 3 Serviceability** – ThinkStation® workstations are designed to make upgrades fast and easy.
- 4 Wide range of ISV certifications** – Ensures compatibility with key workstation applications.

* Legal footnote: A 2012 TBR Repair Rate Study found ThinkStation to be 24% more reliable than Dell and 16% more reliable than HP workstations

©2014 Lenovo. All rights reserved.

Availability: Offers, prices, specifications and availability may change without notice. Lenovo is not responsible for photographic or typographic errors. Warranty: For a copy of applicable warranties, write to: Warranty Information, 500 Park Offices Drive, RTP, NC, 27709, Attn: Dept. ZPIA/B600. Lenovo makes no representation or warranty regarding third-party products or services. Trademarks: Lenovo, the Lenovo logo, Rescue and Recovery, ThinkStation, ThinkVantage and ThinkVision are trademarks or registered trademarks of Lenovo. Microsoft, Windows and Vista are registered trademarks of Microsoft Corporation. Intel, the Intel logo, Intel Inside logo, Intel Atom and Intel Atom Inside are trademarks of Intel Corporation in the U.S. and/or other countries. Other company, product and service names may be trademarks or service marks of others. Battery life (and recharge times) will vary based on many factors including system settings and usage. Visit Lenovo.com/safecomputing periodically for the latest information on safe and effective computing.

