

▶ **55VH7B**
55" Class (54.6" diagonal)

Digital Signage **WINNER**
BEST OF SHOW
InfoComm 2015

SOUND & VIDEO CONTRACTOR **WINNER**
BEST OF SHOW
InfoComm 2015



With its borderless design, the VH7B series offers maximum immersion for video walls. Engineered with efficient management tools such as quad-core System on Chip (SoC) which plays various types of content without the need for an external media player. The VH7B is perfect to effectively raise a customer's awareness, particularly in areas with heavy foot traffic such as museums, galleries, and large retail stores.

KEY FEATURES

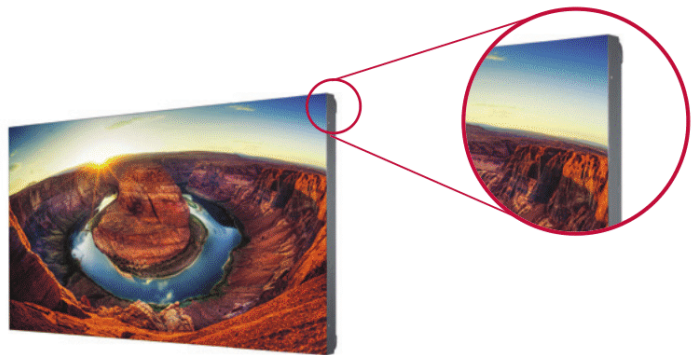
Borderless Design



NARROWEST BEZEL

Borderless design with its 0.9mm even panel bezel* enables immersive and seamless viewing experiences on assembled video wall screens.

* Panel Bezel : The black matrix section where an image is not displayed on the front panel.

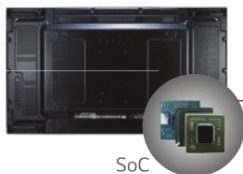


Smart Platform



BUILT-IN SoC AND SYNCED PLAYBACK

The optimized built-in quad-core SoC in the VH7B can play various content formats and eliminates the need for an external media player. Using its built-in SoC, each display plays its video tile without lag for synchronized content playback.



- CPU**
1.2GHz Quad Core CPU
- Memory**
2.5GB double data 3 (DDR3) 32bit memory
- GPU**
550MHz video processor with full codec (WMV, MP4, HEVC, VP9, and H.264 capabilities)
- Internal Memory**
A storage of 8GB (4GB is occupied by system)

webOS 2.0

The webOS 2.0 platform provides easy and convenient tools to create contents. LG's Software Development Kit (SDK) and technical supports make content development and management easier.

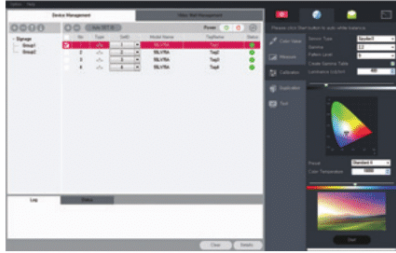


<http://developer.lge.com/webOSSignage>

Software

ADVANCED COLOR ADJUSTMENT

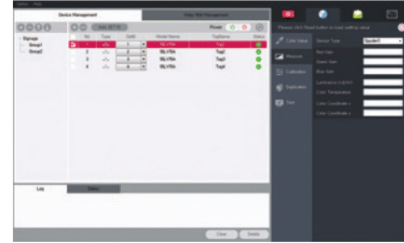
- Intuitive GUI in SuperSign C software allows measurement, color adjustment and brightness instantly on display
- Automatic white balancing of a videowall display when using a sensor



SuperSign C

REMOTE MONITORING AND CONTROL

Intuitive GUI-based Remote Monitoring & Control via the networks and RS232 connection feature in SuperSign C software.

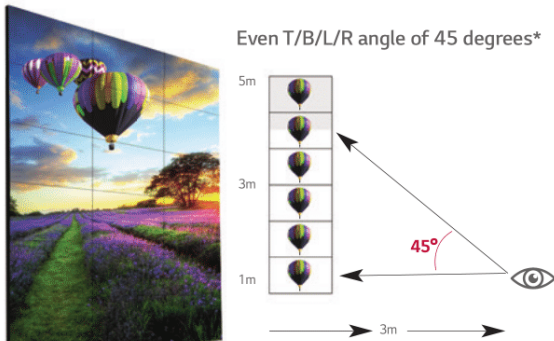


SuperSign C

Superior Picture Quality

CLEAR VIEWING ANGLE

The VH7B ensures clear picture quality even when installed in stacks of more than four. This is very favorable for the quantity of video walls installed in large spaces.



*The angle from the center of the screen to have 50% of the initial luminance.

UNIFORM BRIGHTNESS

LG's LED backlight technology guarantees high uniformity in brightness to ensure a clear picture. On other screens, certain spots may appear darker than others, but the new VH7B generates high visibility and a consistent brightness across the whole screen.



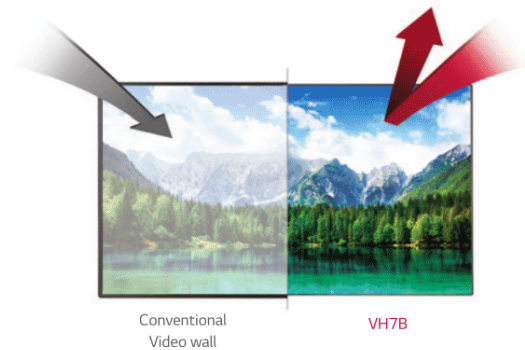
IMAGE GAP REDUCTION

The VH7B includes an image improvement algorithm that can adjust to objects located in the boundary of bezel for a seamless viewing experience.



SHINE OUT

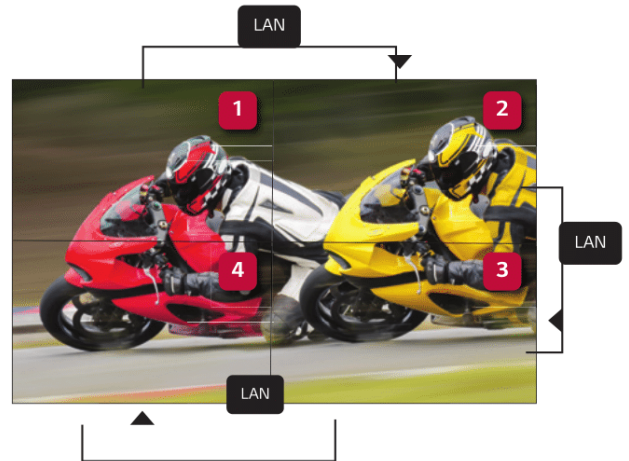
The VH7B is the perfect fit for window displays because it reflects sunlight for better visibility and a clearer image than conventional panels.



Enhanced Content Management

LAN DAISY CHAIN PERFORMANCE

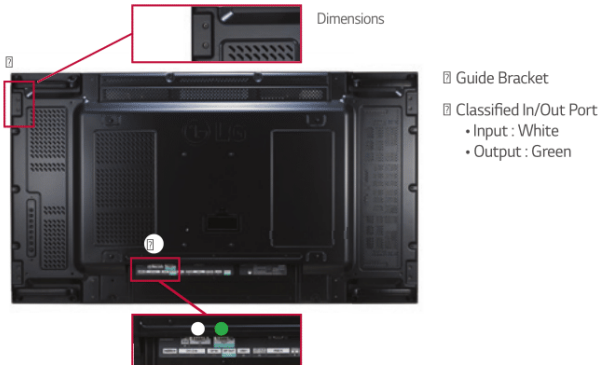
A LAN daisy chain allows you to execute commands to control and monitor the screens and even update their firmware.



Convenient Options

GUIDE BRACKET / CLASSIFIED PORT

A guide bracket is an attachment that ensures the video wall remains flat. The classified in/out port prevents errors when connecting a daisy chain.

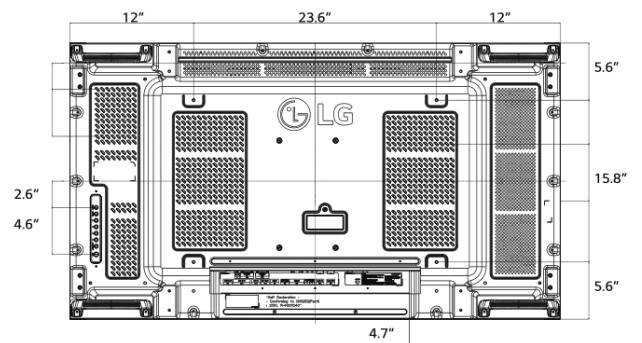
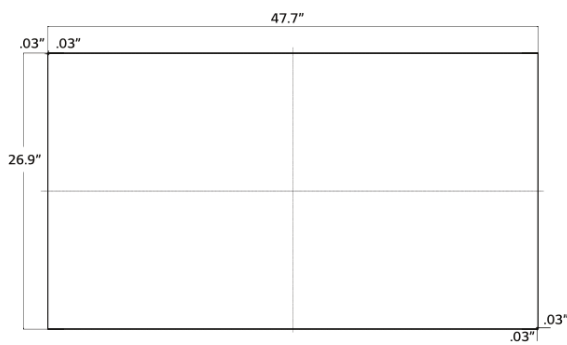


CONTROL BUTTONS

With 8 control buttons, it's easy to operate various functions of the VH7B, such as controlling the OSD (On Screen Display) and changing the input source.

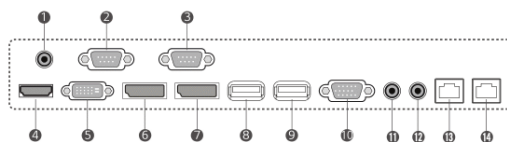


Dimensions



Rear Jack Panel

- 1 IR IN
- 2 RS-232C IN
- 3 RS-232C OUT
- 4 HDMI IN
- 5 DVI-D IN
- 6 DP IN
- 7 DP OUT
- 8 USB 2.0 IN
- 9 USB 3.0 IN
- 10 RGB/COMPONENT/AV IN
- 11 AUDIO IN
- 12 AUDIO OUT
- 13 LAN IN
- 14 LAN OUT



55VH7B

Extraordinary Premium Video Wall Panel

55VH7B

55" Class (54.6" diagonal)

PANEL	Model name	55VH7B
	Screen Size	55" class (54.64" diagonal)
	Panel Technology	IPS
	Aspect Ratio	16:9
	Native Resolution	1920 x 1080 (FHD)
	Pixels (H x V x 3)	6,220,800
	Brightness	700cd/m ²
	Contrast Ratio	1,400:1
	Dynamic CR	500,000:1
	Color Gamut	72%
	Viewing Angle (H x V)	178 x 178
	Color Depth	1.06 Billion
	Response Time	8ms (G to G BW)
	Running Time	24Hr
	Orientation	Portrait & Landscape
INPUT	HDMI	HDMI
	DP	DP
	DVI-D	DVI-D
	OPS	OPS
	Analog	RGB
	RS232C IN	Yes
	RJ45 In	Yes
	IR Receiver	Yes
	USB (USB3.0, USB2.0)	Yes (1) / Yes (1)
	HDTV Formats	HDMI: 720p, 1080i, 1080p
OUTPUT	DP Out	Yes (1), DP1.2a/HDCP1.3
	Audio Out	Yes
	RS232C OUT	Yes
	RJ45 Out	Yes
SPECIAL FEATURES	Temperature Sensor	Yes
	Tile Mode	Yes (Up to 15x15)
	Natural Mode @Tile Mode	Yes
	Source Selection	RGB, HDMI, DVI, DP, OPS, USB
	Brightness/Contrast/Backlight	Yes
	Position/Size	Yes
	Auto Config/Phase	Yes
	Language (OSD)	English, French, German, Spanish, Italian, Korean, Chinese (Simplified), Chinese (Original), Portuguese (Brazil), Swedish, Finnish, Norwegian, Danish, Russian, Japanese, Portuguese (Europe), Dutch, Czech, Greek
	ISM Method	Normal, Orbiter, inversion, White wash, User Image/Video, Washing Bar
	Advanced	Clear White, Dynamic Contrast, Dynamic Color, Noise Reduction, Gamma, Black Level, Skin color, Digital Noise Reduction
	Time	Clock, On/off Time, Sleep Timer, Power on Delay
	Input Label	Yes (PC/DTV)
	Power On Status	Standby, PWR, LST
	Key Operation	IR operation, Local key operation
	DPM Select	Yes
	Energy Saving	Yes (Off / Minimum / Medium / Maximum / Screen Off)
	Smart Energy Saving	Yes

SPECIAL FEATURES	Model name	55VH7B
	File Play With USB	Yes
	Internal Memory	8GB (System 4GB + Available 4GB)
	Wi-Fi	WiFi Dongle Ready
	USB Cloning	Logo image download, Sent to USB, Receive from USB
	Contents Scheduling	USB, Internal memory
	Calibration Mode	Yes
	DST(Summertime Saving)	Yes
	Sync Mode	Time sync, Content sync
	PM Mode	Yes
	Framework Update (LAN)	Yes
	Local Time Auto Setting	Yes
	Still Image Diagnosis	Yes
	HDMI-CEC	Yes
	Wake On LAN	Yes
	Digital Audio Input	Yes
	Power On Delay	0 - 255
	Pivot Mode	Yes
	Content Rotation	0,90
	OSD Portrait Mode	0,90
	Intelligent Auto	Yes
	Password Change	Yes
	SetID Setup	Manual, Auto
	Configuration Setup	USB auto Playback
	Lock Mode	USB
	Fail Over	USB, RGB, DVI, HDMI, Internal Memory
	SuperSign Server Setup	Signage name, Server IP setting, Server IP Status
	Media Share	Yes
	Beacon	Yes
	Embedded Template	Yes
	Check Screen	Yes
	OPS PC Power Control	Sync On, Sync On/Off, Disable
ENVIRONMENT CONDITIONS	Operation Temperature	32°F - 104°F
	Operation Humidity	10% - 90%
POWER	Power Supply	100-240V~, 50/60Hz
	Power Type	Built-In Power
	Typ.	220W
	Smart Energy Saving	110W
	DPM	0.7W
	Power Off	0.5W
CERTIFICATION	Safety, EMC, ErP / ENERGY STAR®	UL / cUL / CB / TUV / KC / FCC Class "A" / CE / KCC / FCC Class "A" / CE / KCC
MEDIA PLAYER COMPATIBILITY	OPS Type Compatible	Yes
	External Media Player Attachable	Yes (MP500/MP700)
SOFTWARE COMPATIBILITY	SuperSign-W lite	Yes
	SuperSign-C	Yes
CABINET	Bezel Width	0.9mm (Top/Bottom/Left/Right)
	(W x H x D)	47.69" x 26.86" x 3.41"
	Weight	43.65lbs
	Carton (W x H x D)	53.27" x 33.66" x 10.35"
	Carton Weight	55.12lbs
	Handle	Yes
	VESA™ Compatible	600mm x 400mm
ACCESSORIES	Basic	Remote Controller, Power cable, DP Cable, Manual, IR Receiver, RS-232C Cable, LAN Cable, Guide Bracket, Screw
	Optional	Wall Mount (Landscape : WM-L640V, Portrait : WM-P640V) OPS Kit (KT-OPSA), HD Base T(EB-B100)
OTHER	UPC	7 19192 19831 9
WARRANTY	3-Year Limited Warranty Parts/Labor/Backlight Extended warranty options are also available	